

REC \$ 5.80  
AUD \$ \_\_\_\_\_  
R.M.F. \$ 1.80

COMPUTER   
RECORDED   
COMPARED \_\_\_\_\_

MICKI UTSLER  
RECORDER  
MADISON COUNTY, IOWA

RETURN TO : BOLDMAN LAND SURVEYING, P.C., BOX 66, WINTERSET, IA 50273 515-462-9242

### UNITED STATES PUBLIC LAND SURVEY CORNER CERTIFICATE

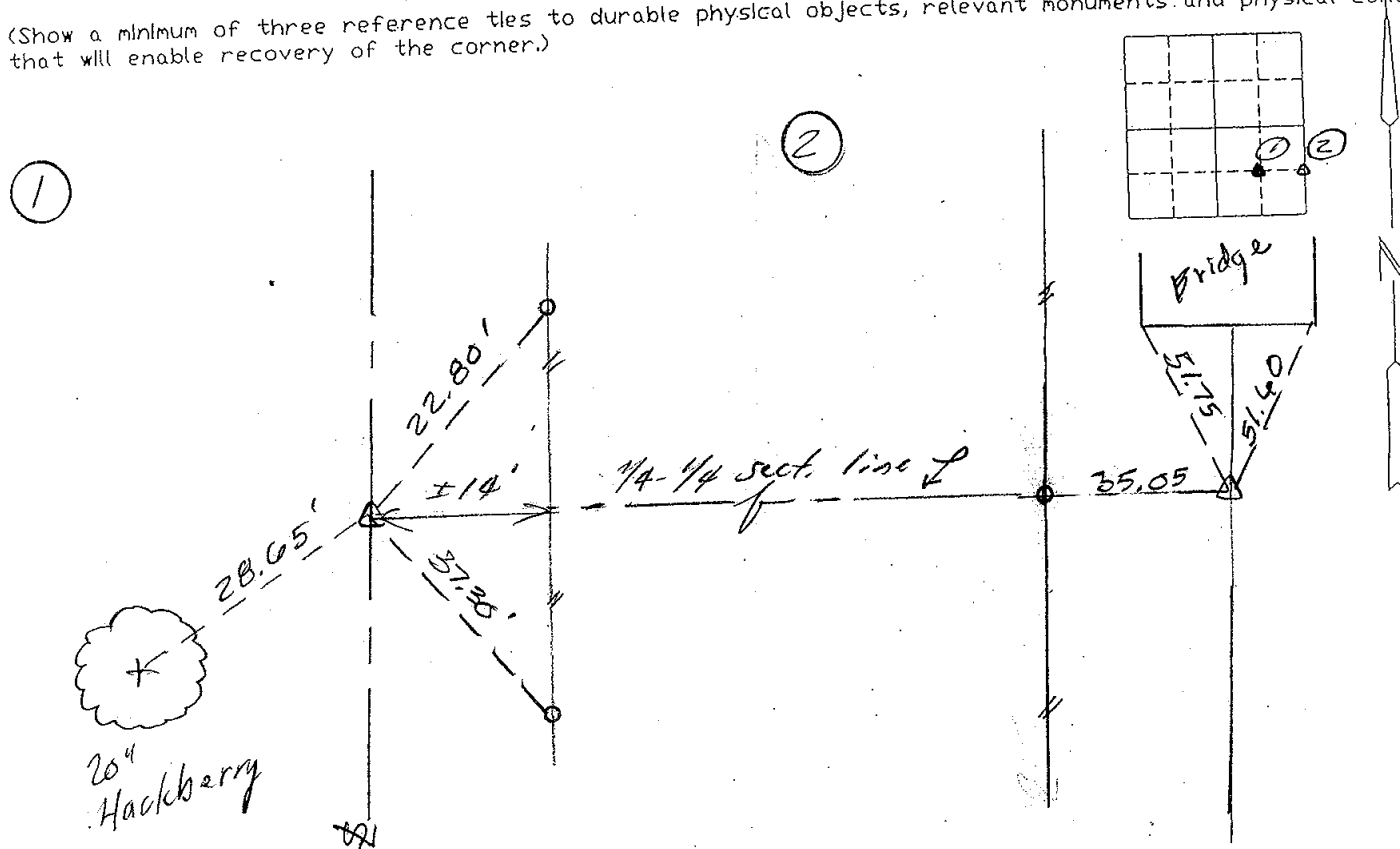
Land Survey Monuments situated in Section 17 of Township 77N, Range \_\_\_\_\_  
27W, of the Fifth Principal Meridian, Madison County, Iowa  
Previously recorded in No Record In County Recorder's Office.  
(book, page, document number, etc.)

(show reason for preparing this certificate, the evidence and detailed procedures used in establishing the corner positions and monumentation found or placed.)

Monument Description and Remarks: ① Set 1/2" Reb. w/cap at midpoint  
② Set Track spike at midpoint.

#### PLAN-VIEW

(Show a minimum of three reference ties to durable physical objects, relevant monuments and physical conditions that will enable recovery of the corner.)



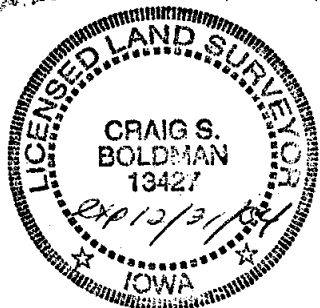
Ret. ties are to 60d spikes  
Unless noted otherwise

I hereby certify that the survey work was completed and this certificate was prepared by me or under my direct personal supervision and that I am a duly Licensed Land Surveyor under the laws of the State of Iowa

Signature: Craig S. Boldman  
Craig S. Boldman

Date: 3/7/03 Reg. No. 13427

SEAL



#### List Corners to be Indexed

| Corners       | Section | Twp | Range |
|---------------|---------|-----|-------|
| E 1/4 SE 1/4  | 17      | 77  | 27    |
| Center SE 1/4 | "       | "   | "     |