

REC \$ **5.00**  
AUD \$ **1.00**  
R.M.F. \$ **1.00**

COMPUTER   
RECORDED   
COMPARED

NICKI UTSLER  
RECORDER  
MADISON COUNTY, IOWA

RETURN TO: **BOLDMAN LAND SURVEYING, P.C., BOX 66, WINTERSSET, IA 50273 515-462-9242**

UNITED STATES PUBLIC LAND SURVEY CORNER CERTIFICATE

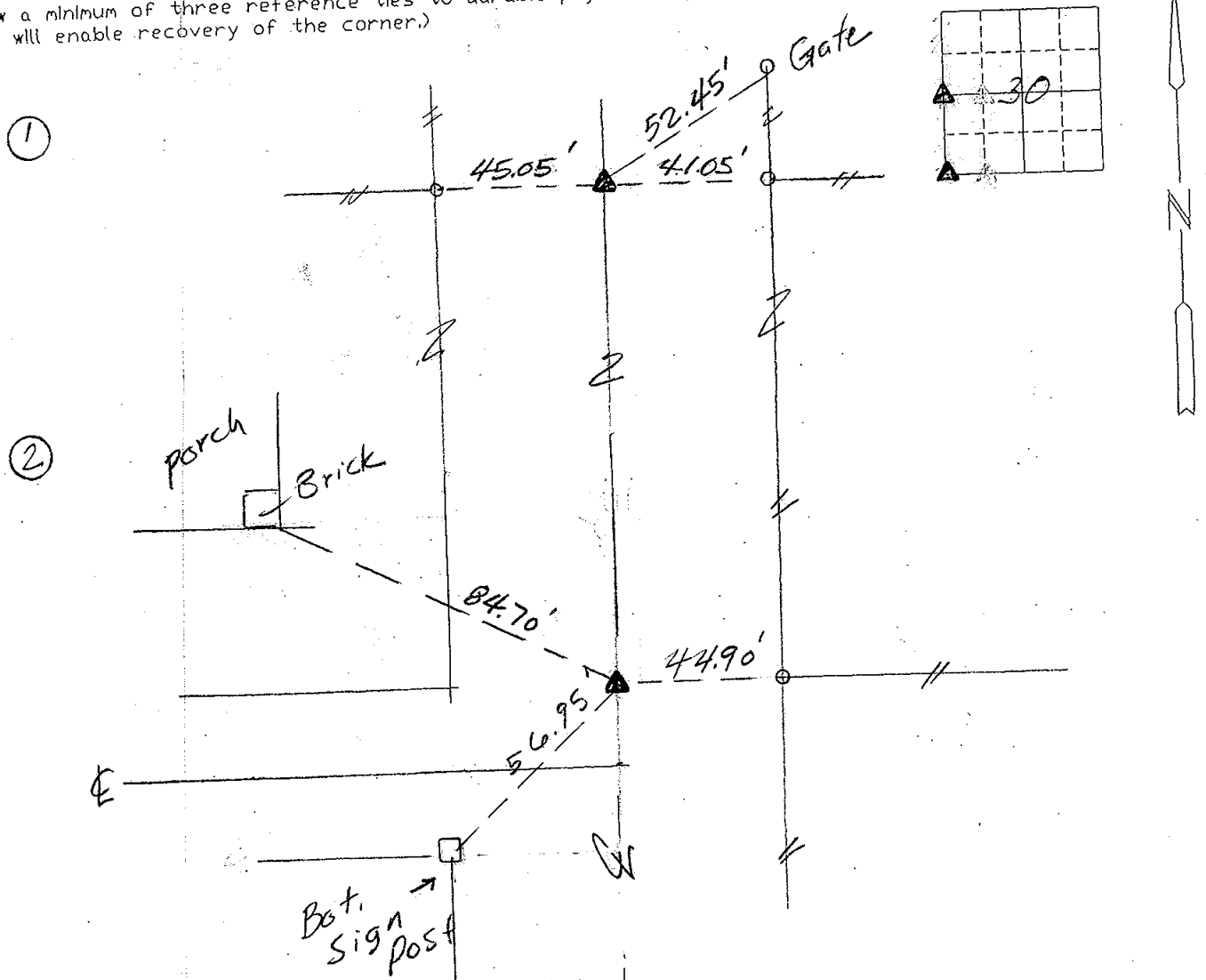
Land Survey Monuments situated in Section 30 of Township 74 N. Range 26 W. of the Fifth Principal Meridian, Madison County, Iowa. Previously recorded in No Record in County Recorder's Office. (book, page, document number, etc.)

(show reason for preparing this certificate, the evidence and detailed procedures used in establishing the corner positions and monumentation found or placed.)

Monument Description and Remarks: ① Found 1/2" Reb. in line w/ E-W Fence  
② Found 1/2" Reb. in line w/ Fence East.

PLAN-VIEW

(Show a minimum of three reference ties to durable physical objects, relevant monuments and physical conditions that will enable recovery of the corner.)



I hereby certify that the survey work was completed and this certificate was prepared by me or under my direct personal supervision and that I am a duly Licensed Land Surveyor under the laws of the State of Iowa

List Corners to be Indexed

Corners	Section	Twp	Range
W1/4	30	74	26
SW Cor.	"	"	"

Signature: Craig S. Boldman  
Date: 3/4/03 Reg. No. 13427

SEAL

