

REC \$ 5.00
AUD \$
R.M.F. \$ 1.00

FILED NO. 000369

BOOK 2003 PAGE 369

2003 JAN 21 PM 3:42

COMPUTER	<input checked="" type="checkbox"/>
RECORDED	<input checked="" type="checkbox"/>
COMPARED	<input type="checkbox"/>

HICKI UTSLER
RECORDER
MADISON COUNTY, IOWA
515-462-9242

RETURN TO : BOLDMAN LAND SURVEYING, P.C., BOX 66, WINTERSSET, IA 50273

UNITED STATES PUBLIC LAND SURVEY CORNER CERTIFICATE

OF

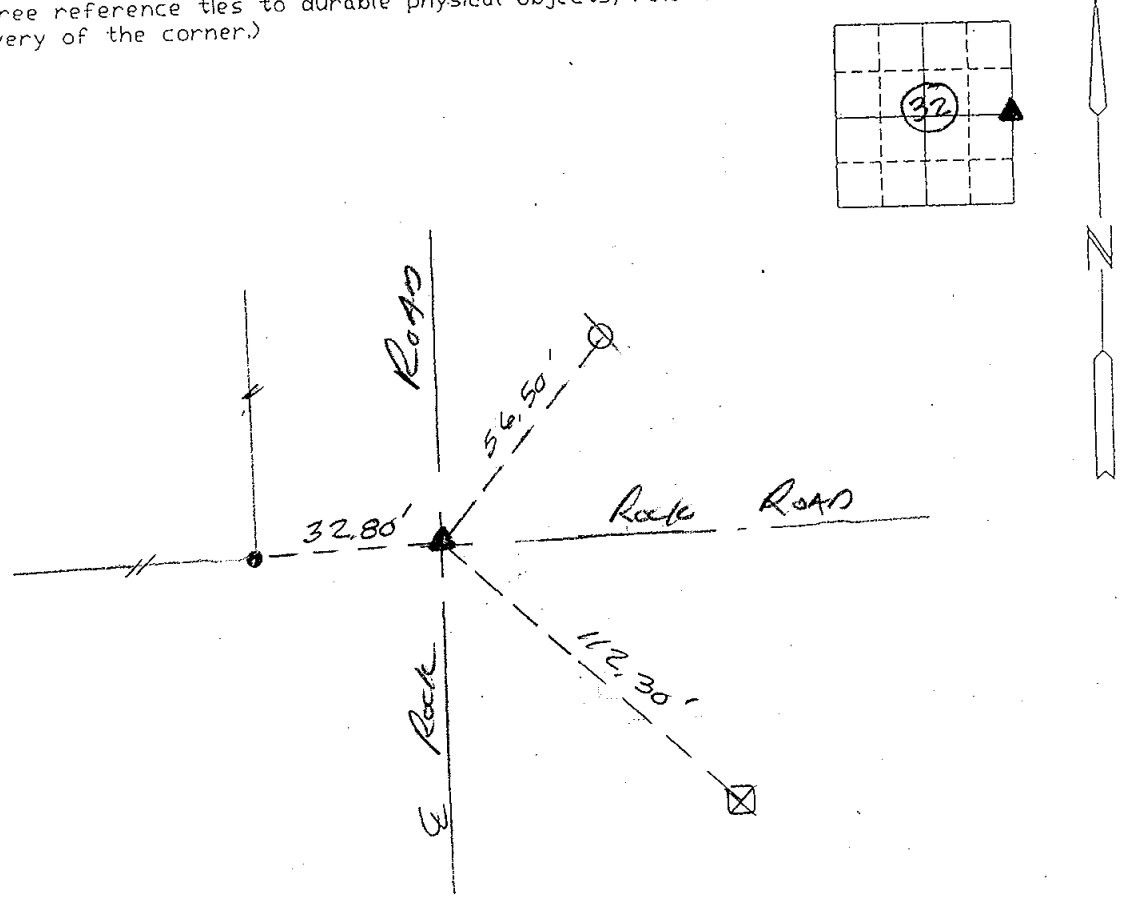
Land Survey Monuments situated in Section 32 Township 75 N Range 28 W of the Fifth Principal Meridian, MADISON County, Iowa
Previously recorded in No RECORD In County Recorder's Office.
(book, page, document number, etc.)

(show reason for preparing this certificate, the evidence and detailed procedures used in establishing the corner positions and monumentation found or placed.)

Monument Description and Remarks: FOUND 3/8" PIN 10" DEEP.

PLAN-VIEW

(Show a minimum of three reference ties to durable physical objects, relevant monuments and physical conditions that will enable recovery of the corner.)



E 1/4 CORNER

I hereby certify that the survey work was completed and this certificate was prepared by me or under my direct personal supervision and that I am a duly Licensed Land Surveyor under the laws of the State of Iowa

Signature: Craig S. Boldman
Craig S. Boldman

Date: 1/21/03 Reg. No. 13427

List Corners to be Indexed

Corners	Section	Twp	Range
E 1/4	32	75	28

SEAL

