

REC \$ 5⁰⁰
 AUD \$
 R.M.F. \$

FILED NO. 000367

BOOK 2003 PAGE 367

2003 JAN 21 PM 3:40

COMPUTER
 RECORDED
 COMPARED

NICKI UTSLER
 RECORDER
 MADISON COUNTY, IOWA

RETURN TO : BOLDMAN LAND SURVEYING, P.C., BOX 66, WINTERSET, IA 50273 515-462-9242

UNITED STATES PUBLIC LAND SURVEY CORNER CERTIFICATE

OF

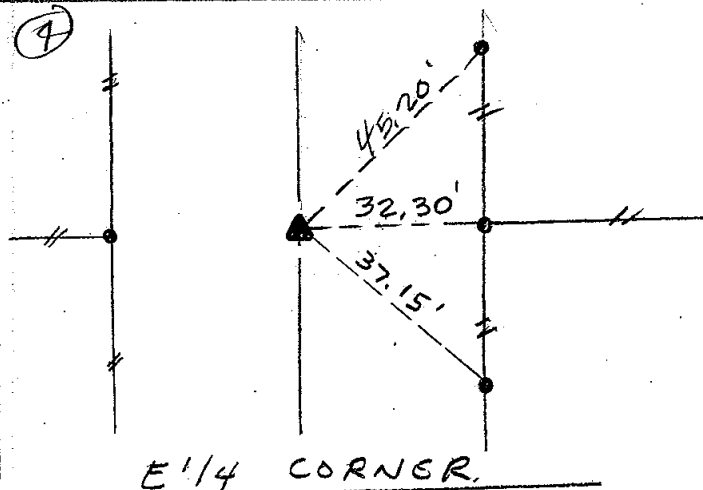
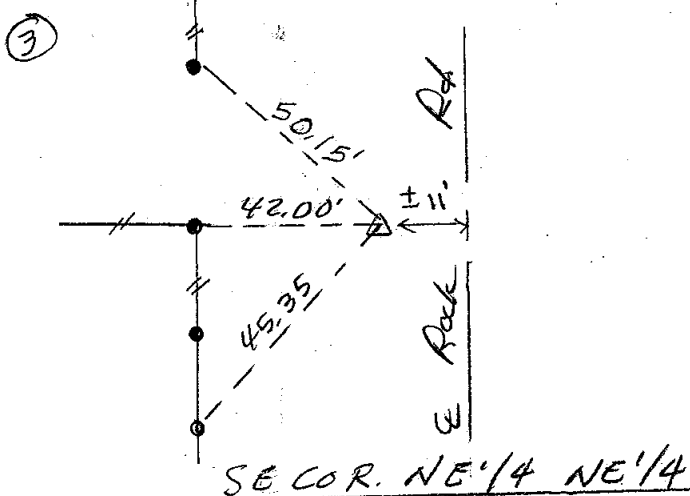
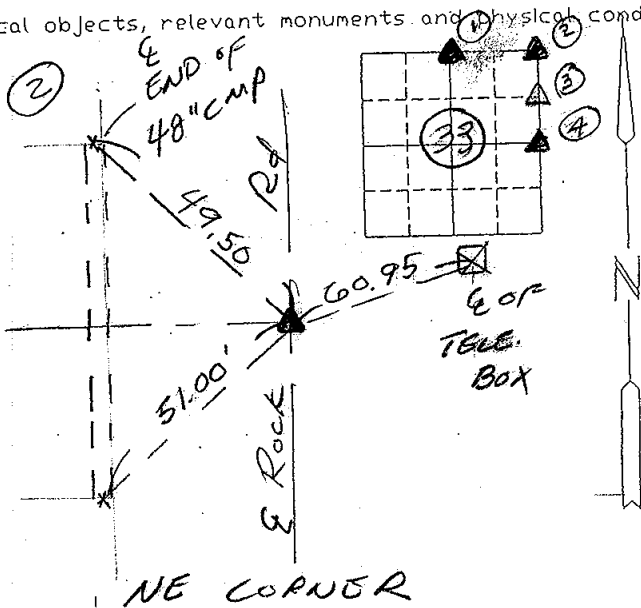
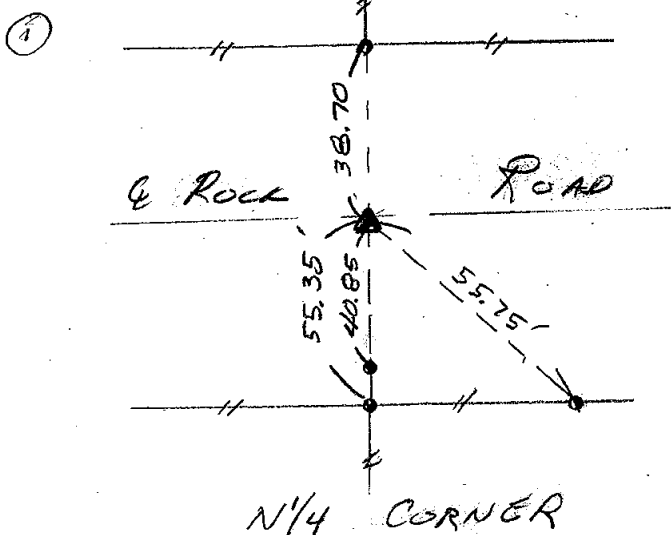
Land Survey Monuments situated in Section 33 Township 74N Range
29W of the Fifth Principal Meridian, MADISON County, Iowa
 Previously recorded in No record In County Recorder's Office.

(Show reason for preparing this certificate, the evidence and detailed procedures used in establishing the corner positions and monumentation found or placed.)

Monument Description and Remarks: ① Fd 5/8" pin in rock road in line w/ fences N+S ② Fd 5/8" pin (bent) replaced w/ 1/2" pin w/cap ③ Set track spike @ mid pt. of ①-④ ④ Fd 5/8" pin in line w/ fence E-W

PLAN-VIEW

(Show a minimum of three reference ties to durable physical objects, relevant monuments and physical conditions that will enable recovery of the corner.)



I hereby certify that the survey work was completed and this certificate was prepared by me or under my direct personal supervision and that I am a duly Licensed Land Surveyor under the laws of the State of Iowa

Signature: Craig S. Boldman
 Craig S. Boldman

Date: 1/21/03 Reg. No. 13427

Exp. 12/31/04

List Corners to be Indexed

Corners	Section	Twp	Range
N1/4	33	74	29
NE	"	"	"
SE COR	"	"	"
NE1/4 NE1/4	"	"	"
E1/4	"	"	"

SEAL

