

REC \$ 10⁰⁰
 AUD \$
 R.M.F. \$

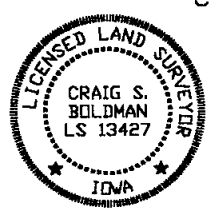
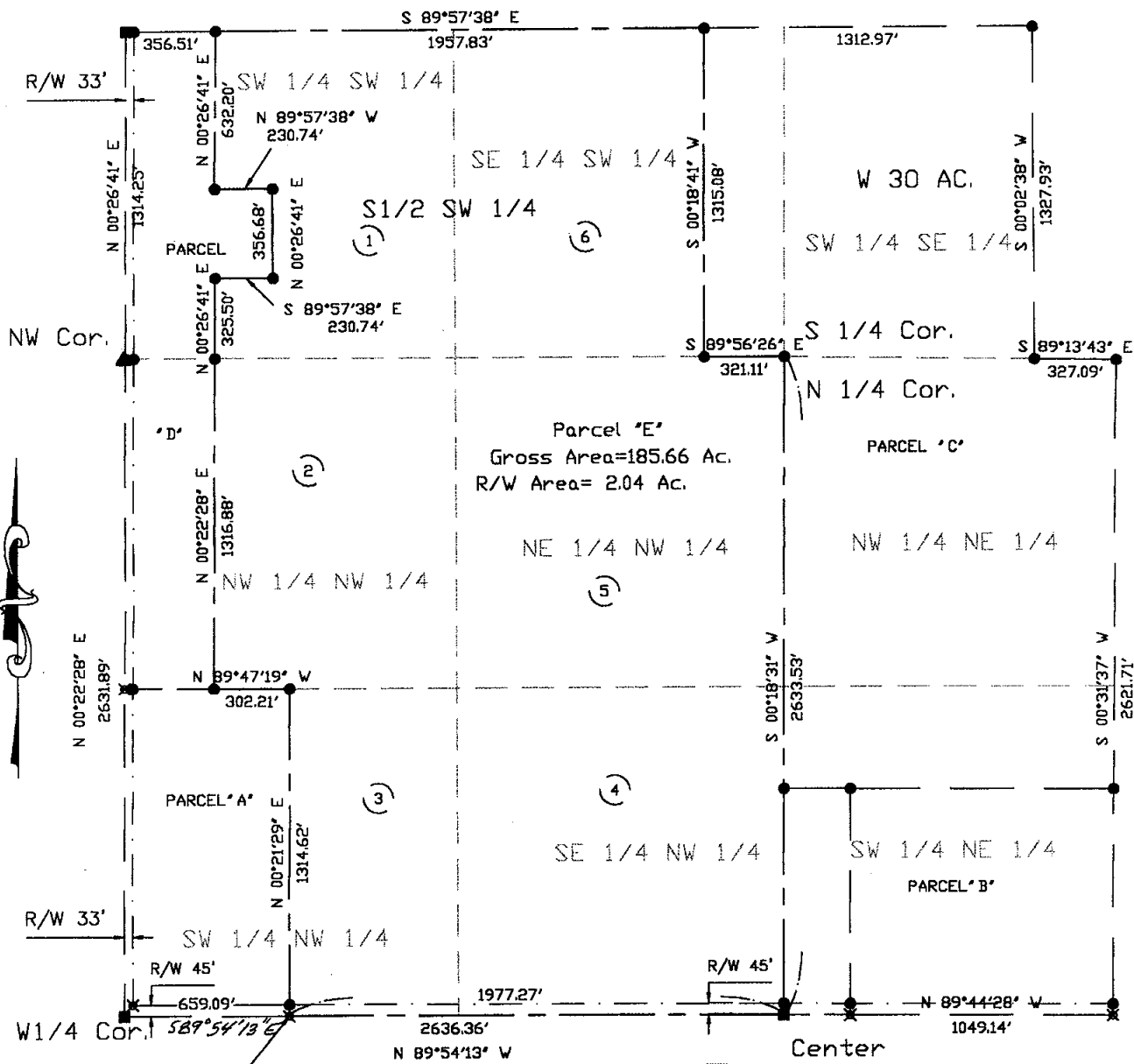
FILED NO. 000206
 BOOK 2003 PAGE 206
 2003 JAN 14 AM 10:13

COMPUTER
 RECORDED
 COMPARED

NICKI UTSLER
 RECORDER
 MADISON COUNTY, IOWA

Prepared by: Boldman Land Surveying, L.L.C., P.O. Box 66, Winterset, Ia. 50273. (515)462-9242

PLAT OF SURVEY IN PART OF THE S1/2 OF THE SW 1/4 OF SECTION 26 AND PART OF THE NW 1/4 OF SECTION 35, ALL IN TOWNSHIP 77 NORTH, RANGE 28 WEST OF THE 5TH P. M., MADISON COUNTY, IOWA.



- LEGEND**
- These standard symbols will be found in the drawing.
- PLACED 1/2" PIN W/ CAP #13427
 - ✕ PLACED SPIKE
 - ▲ 1/2" IRON PIN FOUND CAP #5041
 - 1/2" HEX BOLT FOUND

I HEREBY CERTIFY THAT THIS LAND SURVEYING DOCUMENT WAS PREPARED AND THE RELATED SURVEY WORK WAS PERFORMED BY ME OR UNDER MY DIRECT PERSONAL SUPERVISION AND THAT I AM A DULY LICENSED LAND SURVEYOR UNDER THE LAWS OF THE STATE OF IOWA.

SIGNATURE: *Craig S. Boldman*
 NAME: CRAIG S. BOLDMAN
 DATE: 12/16/02
 MY LICENSE RENEWAL DATE IS: DECEMBER 31, 2004

REQUESTED BY: Mark McDonald		BOLDMAN LAND SURVEYING, L.L.C. P.O. BOX 66 WINTERSSET, IA. 50273 (515)462-9242	
SURVEYED 12/2-4/02	SCALE 1"=500'	OWNER Cy McDonald	
PROJECT NO. 02074	DATE 12/16/02		

Parcel "E"--Part of the S1/2 of the SW 1/4 of Section 26, and Part of the NW 1/4 of Section 35, all in Township 77 North, Range 28 West of the 5th P. M., Madison County, described as follows:

Commencing At the West 1/4 Corner of said Section 35;

Thence S 89 DEGREES 54 MINUTES 13 SECONDS E A Distance Of 659.09' to the Point of Beginning;
Thence N 00 DEGREES 21 MINUTES 29 SECONDS E A Distance Of 1314.62';
Thence N 89 DEGREES 47 MINUTES 19 SECONDS W A Distance Of 302.21';
Thence N 00 DEGREES 22 MINUTES 28 SECONDS E A Distance Of 1316.88';
Thence N 00 DEGREES 26 MINUTES 41 SECONDS E A Distance Of 325.50';
Thence S 89 DEGREES 57 MINUTES 38 SECONDS E A Distance Of 230.74';
Thence N 00 DEGREES 26 MINUTES 41 SECONDS E A Distance Of 356.68';
Thence N 89 DEGREES 57 MINUTES 38 SECONDS W A Distance Of 230.74';
Thence N 00 DEGREES 26 MINUTES 41 SECONDS E A Distance Of 632.20';
Thence S 89 DEGREES 57 MINUTES 38 SECONDS E A Distance Of 1957.83';
Thence S 00 DEGREES 18 MINUTES 41 SECONDS W A Distance Of 1315.08';
Thence S 89 DEGREES 56 MINUTES 26 SECONDS E A Distance Of 321.11';
Thence S 00 DEGREES 18 MINUTES 31 SECONDS W A Distance Of 2633.53';
Thence N 89 DEGREES 54 MINUTES 13 SECONDS W A Distance Of 1977.27' to the Point of Beginning.
Containing an area of 185.66 Acres including 2.04 Acres of county road right of way

Areas by 1/4-1/4 Sections

- ① Gross Area = 26.93 Ac.
- ② Gross Area = 29.16 Ac.
- ③ Gross Area = 20.25 Ac., R/W Area = 0.70 Ac.
- ④ Gross Area = 39.46 Ac., R/W Area = 1.34 Ac.
- ⑤ Gross Area = 39.70 Ac.
- ⑥ Gross Area = 30.16 Ac.