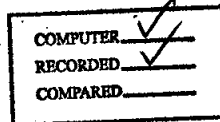


FILED NO. **000008**

BOOK **2003** PAGE **8**

2003 JAN -2 AM 11:58

REC \$ **5.00**
AUD \$ _____
R.M.F. \$ **1.00**



MICKI UTSLER
RECORDER
MADISON COUNTY, IOWA

✓ ASSOCIATED ENGINEERING CO OF IOWA, 2917 M.L. KING JR PKWY, DSM, IOWA, 515-255-3156

UNITED STATES PUBLIC LAND SURVEY CORNER CERTIFICATE OF

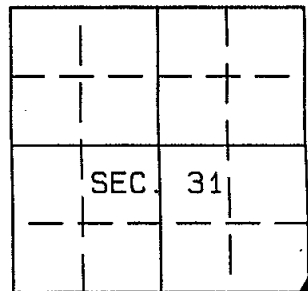
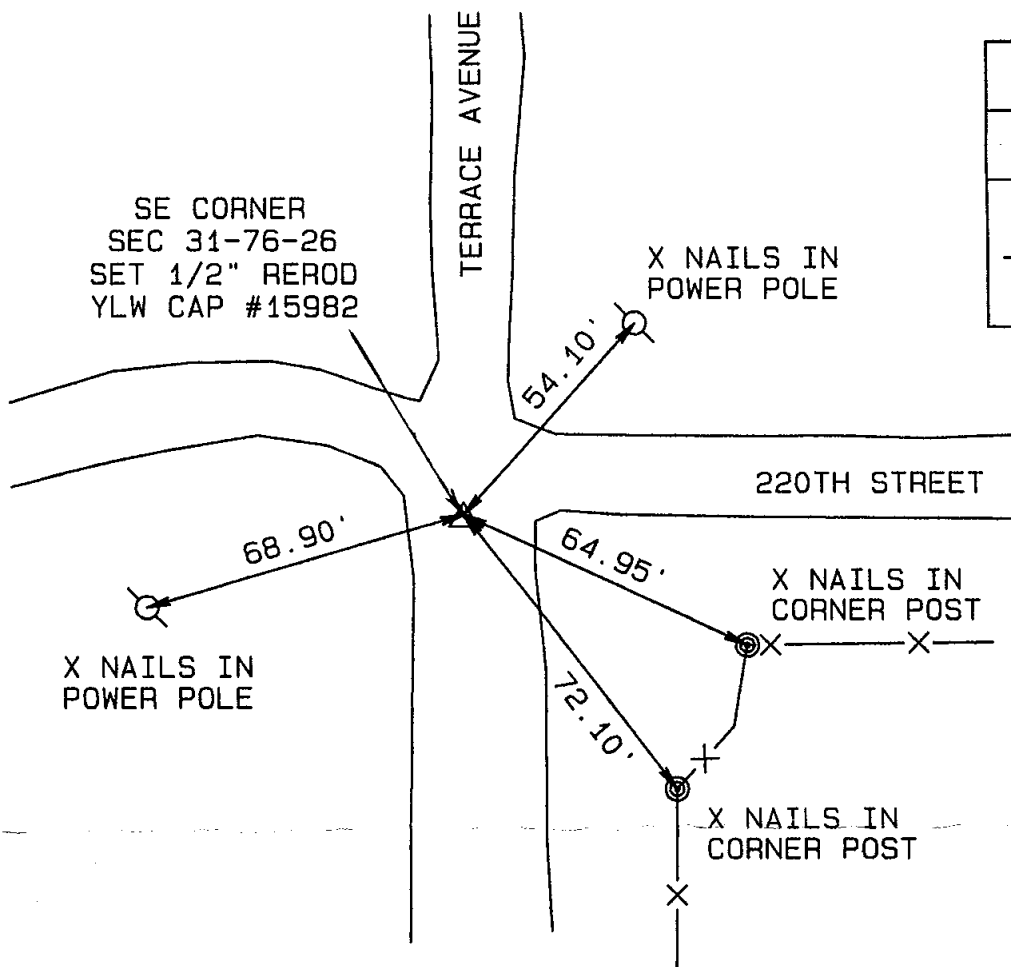
Land survey monuments situated in Section 31, Township 76, Range 26 of the Fifth Principal Meridian, Madison County, Iowa. Previously recorded in _____ in County Recorder's Office.

(Show reason for preparing this certificate, the evidence and detailed procedures used in establishing the corner positions & monumentation found or placed.)

MONUMENT DESCRIPTION AND REMARKS: NO TIES ON RECORD.
PRORATED DISTANCE FROM S1/4 CORNER OF SEC 32-76-26 (2630.1') AS SHOWN IN SURVEY BOOK 3 PAGE 78 IN THE MADISON COUNTY ENGINEER'S OFFICE AND THE S1/4 CORNER OF SEC 31-76-26 (40 CHAINS, 2640.00'). SET 1/2" REROD, WITH YELLOW CAP #15982.

PLAN - VIEW

(Show a minimum of three reference ties to durable physical objects, relevant monuments and physical conditions that will enable recovery of the corner.)



I hereby certify that this land surveying document was prepared and the related survey work was performed by me or under my direct personal supervision and that I am a duly licensed Land Surveyor, under the laws of the State of Iowa.

Signed Vincent E. Piagentini Date 1/26/03

VINCENT E. PIAGENTINI, L.S., Iowa Reg. No 15982
MY LICENSE RENEWAL DATE IS - DECEMBER 31, 2004

PAGES OR SHEETS COVERED BY THIS SEAL: 1



Corners to be Indexed

Corner	Section	Twp.	Range
SE COR	31	76	26
SW COR	32	76	26
NW COR	05	75	26
NE COR	06	75	26