

REC \$ 5.00
AUD \$ 1.00
R.M.F. \$ 1.00

COMPUTER	<input checked="" type="checkbox"/>
RECORDED	<input checked="" type="checkbox"/>
COMPARED	<input type="checkbox"/>

MICKI UTSLER

PHONE 515-252-7457

MADISON COUNTY, IOWA

Prepared by Mark L. Lee, LEE Engineers & Surveyors, 3031 NW 86th Street, Urbandale, Iowa 50322

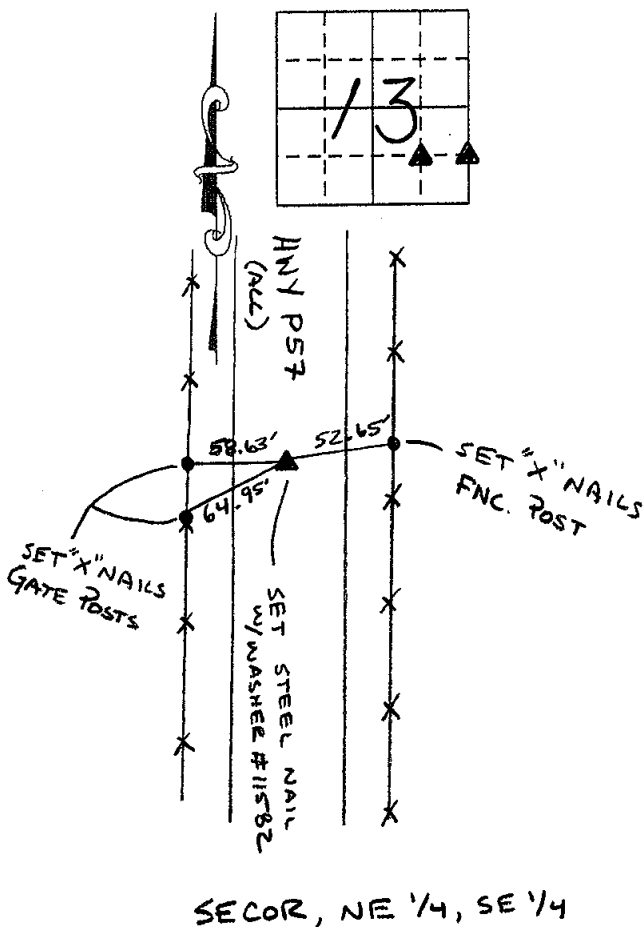
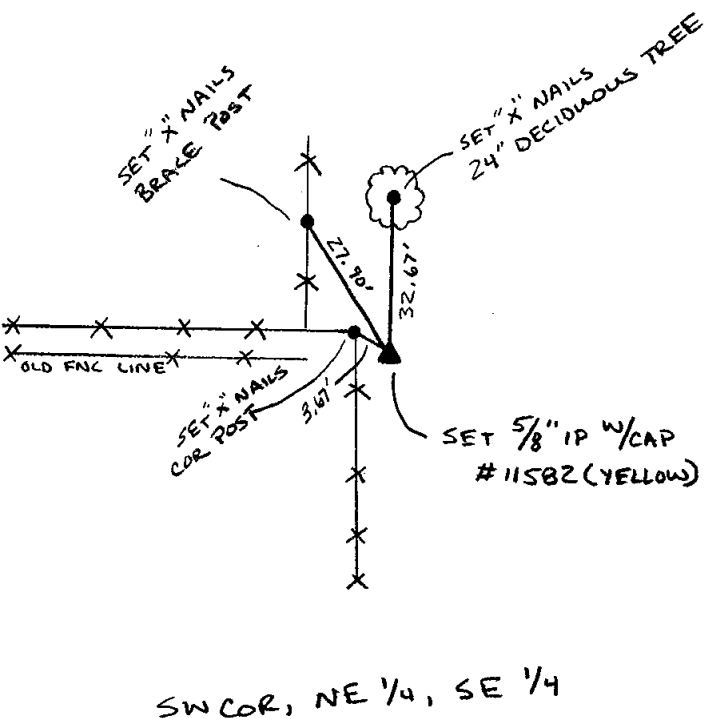
UNITED STATES PUBLIC LAND SURVEY CORNER CERTIFICATE OF

Land Survey Monuments situated in Section 13, Township 77 North, Range 29 West, of the Fifth Principal Meridian, MADISON County, Iowa.

Previously recorded in N/A in the County Recorder's Office.

Monument Description and Remarks: SE COR NE 1/4 SE 1/4 (NO TIES) SET AT LOCATION CALLED OUT IN MADISON CO. ROADWAY ACQUISITION (BK 93 PG 149) ALSO SHOWN ON HIGHWAY PLANS. SW COR NE 1/4 SE 1/4 - SET AT INTERSECTION OF LINE BTW SW COR NW 1/4 SE 1/4 & SE COR NE 1/4 SE 1/4 AND LINE BTW SW COR SE 1/4 SE 1/4 & SW COR SE 1/4 NE 1/4

PLAN - VIEW

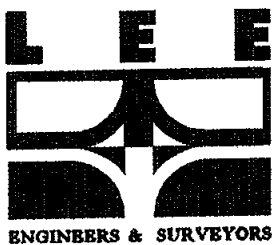
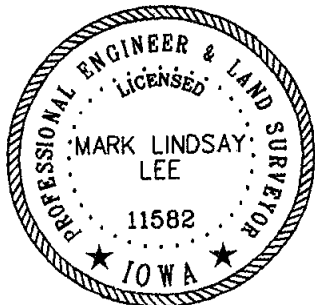


IP = IRON PIPE

I hereby certify that this land surveying document was prepared and the related survey work was performed by me or under my direct personal supervision and that I am a duly licensed Land Surveyor under the laws of the State of Iowa.

Signature: Mark L. Lee
Mark L. Lee

Date: 12-26-02 Reg. No. 11582
My license renewal date is Dec. 31, 2002.



Corners	Section	Twp.	Range
SW COR NE 1/4, SE 1/4	13	77	29
SE COR NE 1/4, SE 1/4	13	77	29