

REC \$ 5<sup>00</sup>  
AUD \$ \_\_\_\_\_  
R.M.F. \$ 1<sup>00</sup>

COMPUTER   
RECORDED   
COMPARED \_\_\_\_\_

BOOK 2002 PAGE 6348

2002 DEC 30 PM 3: 15

MICHIUTSLER  
RECORDED  
PHONE 515-252-7457

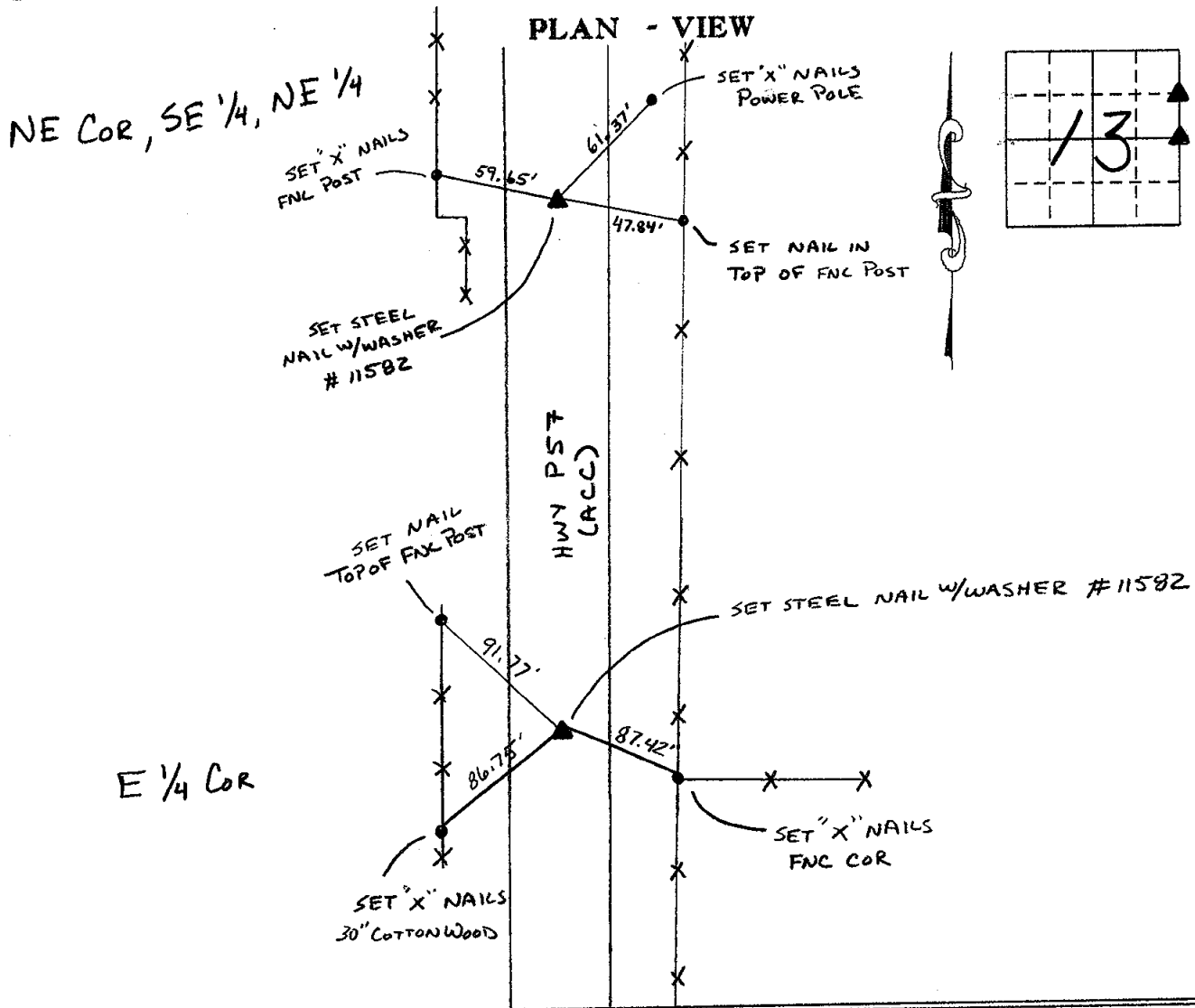
Prepared by Mark L. Lee, LEE Engineers & Surveyors, 3031 NW 86th Street, Urbandale, Iowa 50322

### UNITED STATES PUBLIC LAND SURVEY CORNER CERTIFICATE OF

Land Survey Monuments situated in Section 13, Township 77 North, Range 29 West, of the Fifth Principal Meridian, MADISON County, Iowa.

Previously recorded in N/A in the County Recorder's Office.

Monument Description and Remarks: E 1/4 COR. & NE 1/4, SE 1/4 NE 1/4 SET AT BEARING AND DISTANCE DESCRIPTION CALLED IN LAND ACQUISITION DEED BY MADISON COUNTY ALSO SHOWN IN HIGHWAY PLANS. ACQUISITION REC. BK 93 PG 149



I hereby certify that this land surveying document was prepared and the related survey work was performed by me or under my direct personal supervision and that I am a duly licensed Land Surveyor under the laws of the State of Iowa.

Signature: Mark L. Lee  
Mark L. Lee

Date: 12-26-02 Reg. No. 11582  
My license renewal date is Dec. 31, 2002.

Corners	Section	Twp.	Range
NE COR SE 1/4, NE 1/4	13	77	29
E 1/4 COR	13	77	29

