

REC \$ 5.00
AUD \$ _____
R.M.F. \$ 1.00

COMPUTER
RECORDED
COMPARED _____

NICKI UTSLER
RECORDER
MADISON COUNTY, IOWA

Prepared by Mark L. Lee, LEE Engineers & Surveyors, 3031 NW 86th Street, Urbandale, Iowa 50322 Phone: 515-252-7457

UNITED STATES PUBLIC LAND SURVEY CORNER CERTIFICATE OF

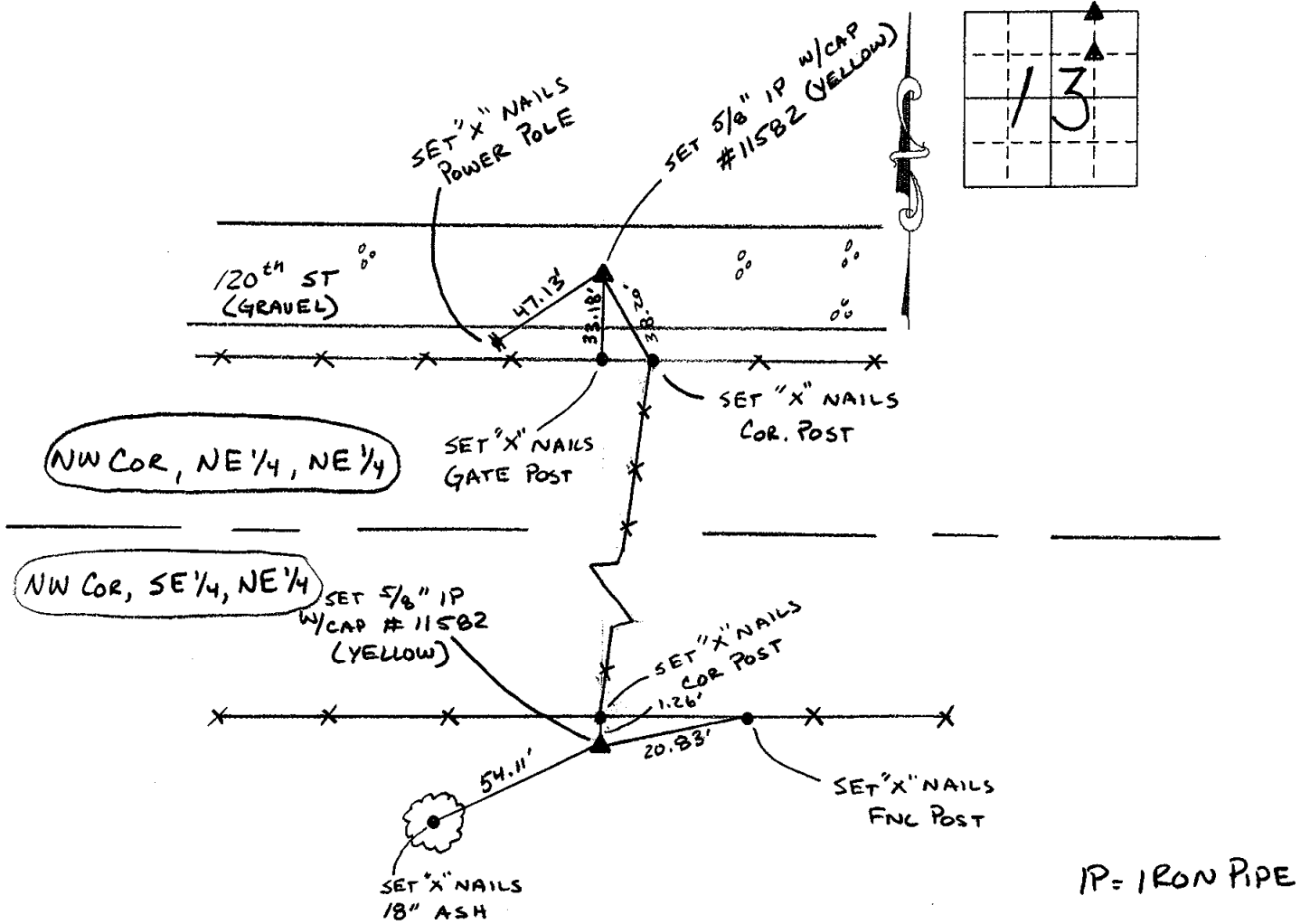
Land Survey Monuments situated in Section 13, Township 77 North, Range 29 West, of the Fifth Principal Meridian, MADISON County, Iowa.

Previously recorded in N/A in the County Recorder's Office.

Monument Description and Remarks: NW COR NE 1/4 NE 1/4 (NO TIES) SET ON LINE EQUIDISTANT BTW N 1/4 COR & NE COR.

NW COR SE 1/4 NE 1/4 SET AT INTERSECTION OF LINE BTW NW COR SW 1/4 NE 1/4 & NE COR. SE 1/4 NE 1/4 AND LINE BTW SW COR SE 1/4 NE 1/4 & NW COR NE 1/4 NE 1/4

PLAN - VIEW



IP = IRON PIPE

I hereby certify that this land surveying document was prepared and the related survey work was performed by me or under my direct personal supervision and that I am a duly licensed Land Surveyor under the laws of the State of Iowa.

Signature: Mark L. Lee
Mark L. Lee

Date: 12-26-02 Reg. No. 11582
My license renewal date is Dec. 31, 2002.

Corners	Section	Twp.	Range
NW COR NE 1/4, NE 1/4	13	77	29
NW COR SE 1/4, NE 1/4	13	77	29

