

2002 NOV 21 PM 3:24

MICKI UTSLER
RECORDER
MADISON COUNTY, IOWA

REC \$ 5⁰⁰
AUD \$
R.M.F. \$

COMPUTER	✓
RECORDED	✓
COMPARED	

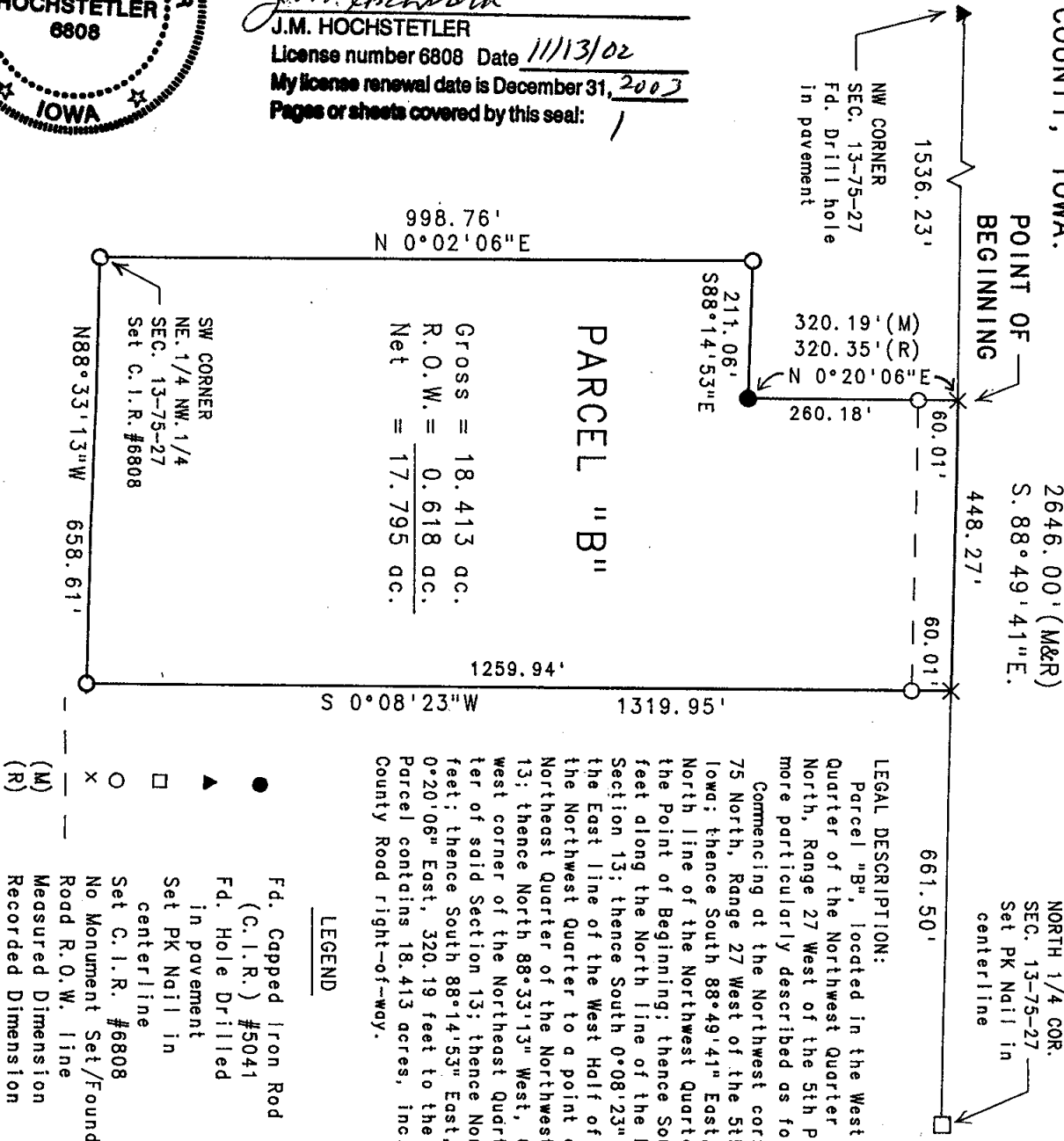
VANCE & HOCHSTETLER, P.C. CONSULTING ENGINEERS, WINTERSET, IOWA (515) 462-3995
CHARLES T. VANCE, 110 WEST GREEN ST., WINTERSET, IOWA 50273
JAMES M HOCHSTETLER, 110 WEST GREEN ST., WINTERSET, IOWA 50273



I hereby certify that this land surveying document was prepared and the related survey work was performed by me or under my direct personal supervision and that I am a duly licensed Land Surveyor under the laws of the State of Iowa.

J. M. Hochstetler
J.M. HOCHSTETLER
License number 6808 Date 11/13/02
My license renewal date is December 31, 2007
Pages or sheets covered by this seal: 1

A PLAT OF SURVEY FOR PATRICK F. & MARY A. CORKREAN LOCATED IN THE NORTHEAST QUARTER OF THE NORTHWEST QUARTER OF SECTION 13, TOWNSHIP 75 NORTH, RANGE 27 WEST OF THE 5th P.M., MADISON COUNTY, IOWA.



DATE OF SURVEY:
November 8, 2002
SCALE: 1" = 200'

