

REC \$ 5<sup>00</sup>  
AUD \$  
R.M.F. \$ 1<sup>00</sup>

FILED NO. 005678  
BOOK 2002 PAGE 5678

2002 NOV 19 PM 1:46

COMPUTER	✓
RECORDED	✓
COMPEARED	

MICKI UTSLER  
RECORDER  
1641-627-5550 WA

Prepared By: J. Brian Morrissey, Morrissey Surveying, 1405 Hwy G28 Otley, Iowa 50214-8518

# UNITED STATES PUBLIC LAND SURVEY CORNER CERTIFICATE OF

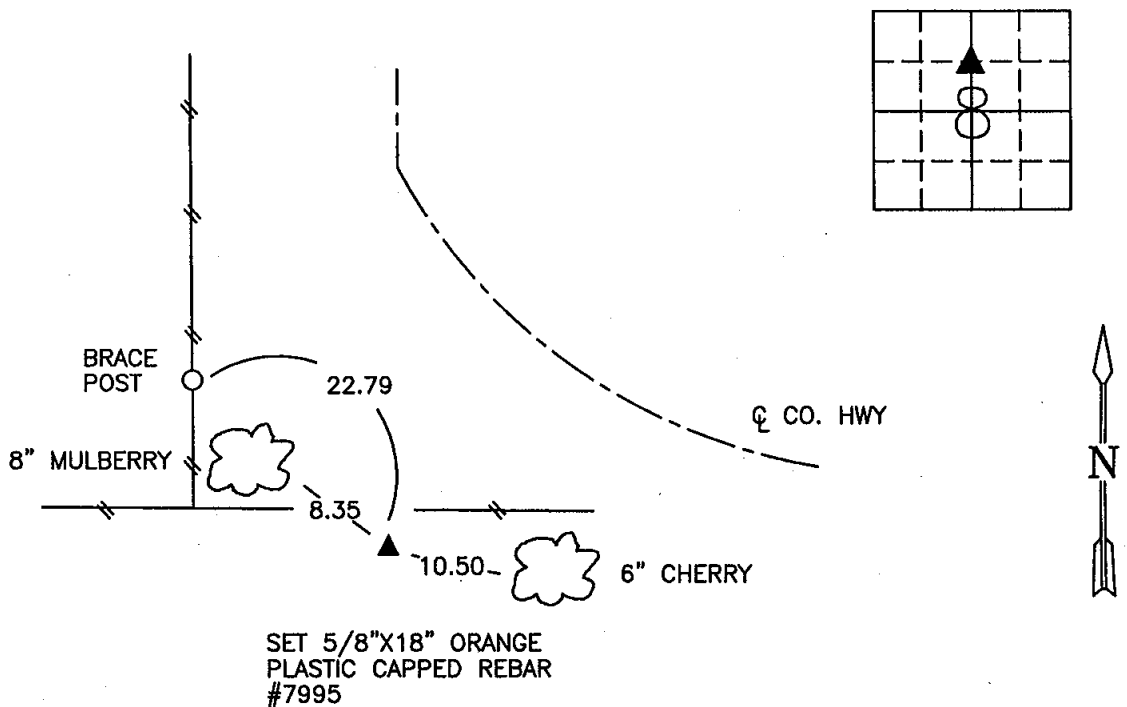
Land Survey Monuments situated in Section 8, Township 75 N, Range 26 W, of the Fifth Principal Meridian, Madison County, Iowa. Previously recorded in N.A. in County Recorders Office.  
(book, page, document number, etc.)

(Show reason for preparing this certificate, the evidence and detailed procedures used in establishing the corner positions and monumentation found or placed.)

Monument Description and Remarks: Set 5/8" x 18" orange plastic capped rebar, #7995 at intersection of N 1/4 corner and centerline of road to the North with found SW corner of the NE 1/4 of the NW 1/4 and found stone to E. set by O.A. Mosher, Deputy County Surveyor, on a survey recorded in Surveyor's Record Book 1, Page 165.

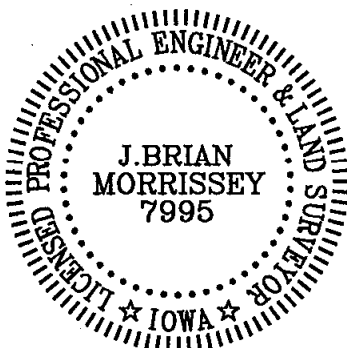
## PLAN VIEW

(Show a minimum of three reference ties to durable physical objects, relevant monuments and physical conditions that will enable recovery of the corner.)



SE COR., NE 1/4, NW 1/4, SEC. 8

NOTE: ALL TIES TO "X" NAILS UNLESS NOTED.



I hereby certify that the survey work was completed and this certificate was prepared by me or under my direct personal supervision and that I am a duly Licensed Land Surveyor under the laws of the State of Iowa.

Signature: J. Brian Morrissey Date: 11/18/02  
J. Brian Morrissey

License number 7995.  
My license renewal date is December 31, 2003.