

REC \$ 5⁰⁰
AUD \$
R.M.F. \$

FILED NO. 006077

BOOK 2002 PAGE 6077

2002 DEC 13 PM 2:47

COMPUTER	<input checked="" type="checkbox"/>
RECORDED	<input checked="" type="checkbox"/>
COMPARED	<input type="checkbox"/>

MICKI UTSLER
RECORDER
MADISON COUNTY, IOWA

VANCE & HOCHSTETLER, P.C., CONSULTING ENGINEERS, WINTERSET, IOWA (515) 462-3995
02-295 CHARLES T. VANCE, 110 West Green St., Winterset, Iowa, 50273
JAMES M HOCHSTETLER, 110 West Green St., Winterset, Iowa 50273

UNITED STATES PUBLIC LAND SURVEY CORNER CERTIFICATE

Land Survey Monuments situated in Section 4 OF 4 Township 75 N Range 29 W of the Fifth Principal Meridian, MADISON County, Iowa. Previously recorded in _____ in County Recorder's Office. (book, page, document number, etc.)

(Show reason for preparing this certificate, the evidence and detailed procedures used in establishing the the corner positions and monumentation found or placed.)

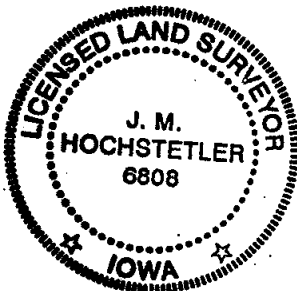
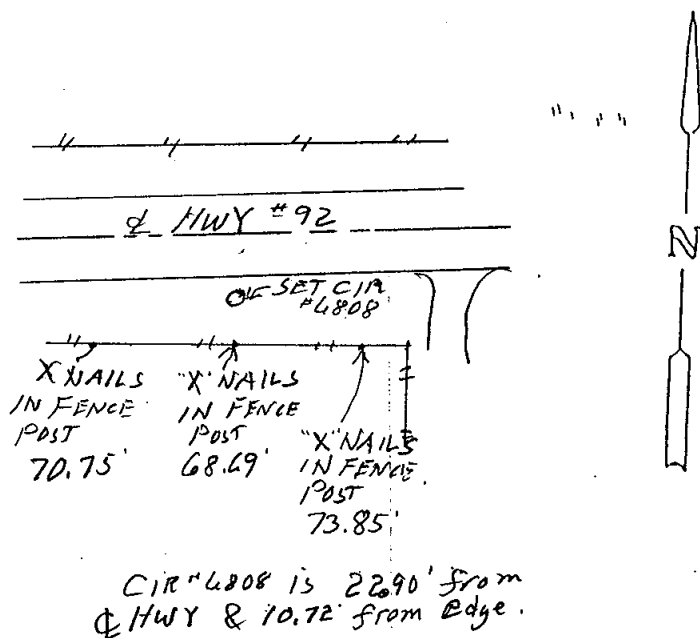
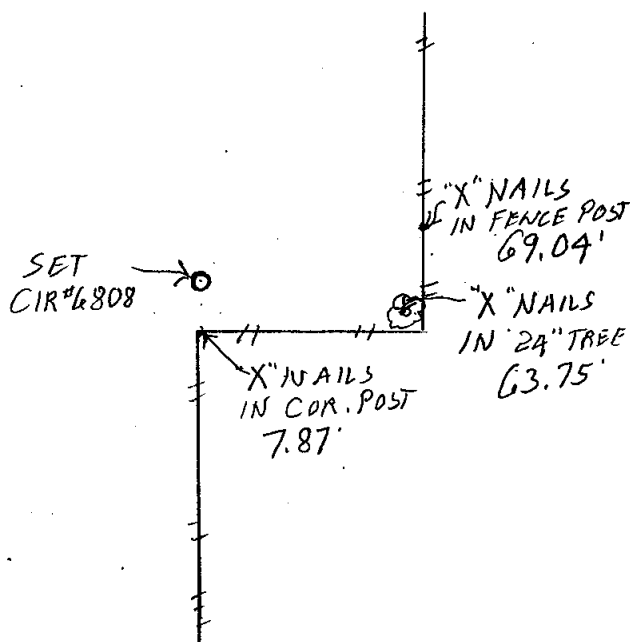
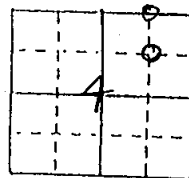
Monument Description and Remarks: SE COR NW 1/4 NE 1/4 - Set yellow CIR # 6808
based on existing old property line fence along the East line
of the SW 1/4 NE 1/4.
NE Cor. NW 1/4 NE 1/4 - Set yellow CIR # 6808 on line at midpoint
between South N 1/4 Cor. and NE Cor.

PLAN - VIEW

(Show a minimum of three reference ties to durable physical objects, relevant monuments and physical conditions that will enable recovery of the corner.)

SE COR
NW 1/4 NE 1/4

NE COR
NW 1/4 NE 1/4



I hereby certify that this land surveying document was prepared and the related survey work was performed by me or under my direct personal supervision and that I am a duly licensed Land Surveyor under the laws of the State of Iowa.

J.M. Hochstetler
J.M. HOCHSTETLER
License number 6808 Date 12/11/02
My license renewal date is December 31 2003
Pages or sheets covered by this seal: 1

List Corners to be Indexed

Corners	Section	Twp	Range
SE COR NW 1/4 NE 1/4	4	75 N	29 W
NE COR NW 1/4 NE 1/4	4	75 N	29 W