

REC \$ 5⁰⁰
AUD \$
R.M.F. \$ 1⁰⁰

COMPUTER
RECORDED
COMPARED

MICKI UTSLER
RECORDER
MADISON COUNTY IOWA

RETURN TO : BOLDMAN LAND SURVEYING, P.C., BOX 66, WINTERSET, IA 50273 515-462-9242

UNITED STATES PUBLIC LAND SURVEY CORNER CERTIFICATE OF

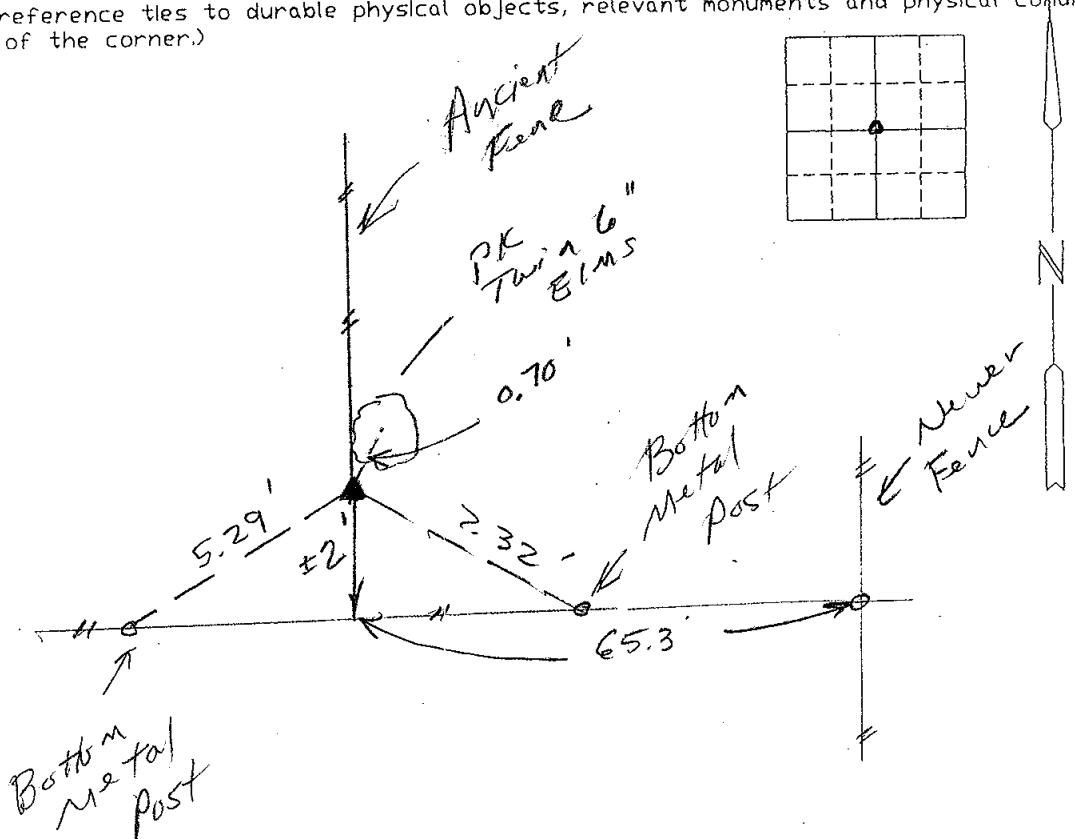
Land Survey Monuments situated in Section 22 Township 76N, Range _____, County, Iowa
Previously recorded in 27W of the Fifth Principal Meridian, Madison County, Iowa
Previously recorded in None In County Recorder's Office.
(book, page, document number, etc.)

(show reason for preparing this certificate, the evidence and detailed procedures used in establishing the corner positions and monumentation found or placed.)

Monument Description and Remarks: Found 6" x 8" Lime stone in line with old fence north. Stone is ± 65' w of inter. of newer N-S, E-W fence post.

PLAN-VIEW

(Show a minimum of three reference ties to durable physical objects, relevant monuments and physical conditions that will enable recovery of the corner.)

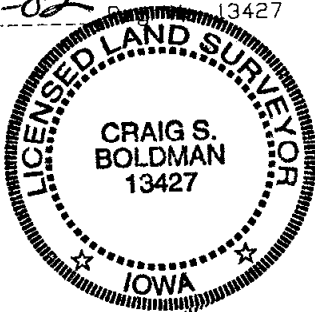


I hereby certify that the survey work was completed and this certificate was prepared by me or under my direct personal supervision and that I am a duly Licensed Land Surveyor under the laws of the State of Iowa

Signature: Craig S. Boldman
Craig S. Boldman

Date: 10-1-02 P. 13427

SEAL



List Corners to be Indexed

Corners	Section	Twp	Range
Center	22	76	27