

004281

FILED NO. 2002 PAGE 4281
2002 AUG 30 AM 11:40

REC \$ 5.00
AUD \$
R.M.F. \$ 1.00

COMPUTER
RECORDED
COMPARED

MICKI UTSLER
RECORDER
MADISON COUNTY, IOWA

RETURN TO : BOLDMAN LAND SURVEYING, P.C., BOX 66, WINTERSSET, IA 50273 515-462-9242
UNITED STATES PUBLIC LAND SURVEY CORNER CERTIFICATE

OF

Land Survey Monuments situated in Section 2, Township 74 North, Range
26 West, of the Fifth Principal Meridian, Madison County, Iowa
Previously recorded in None In County Recorder's Office.

(book, page, document number, etc.)

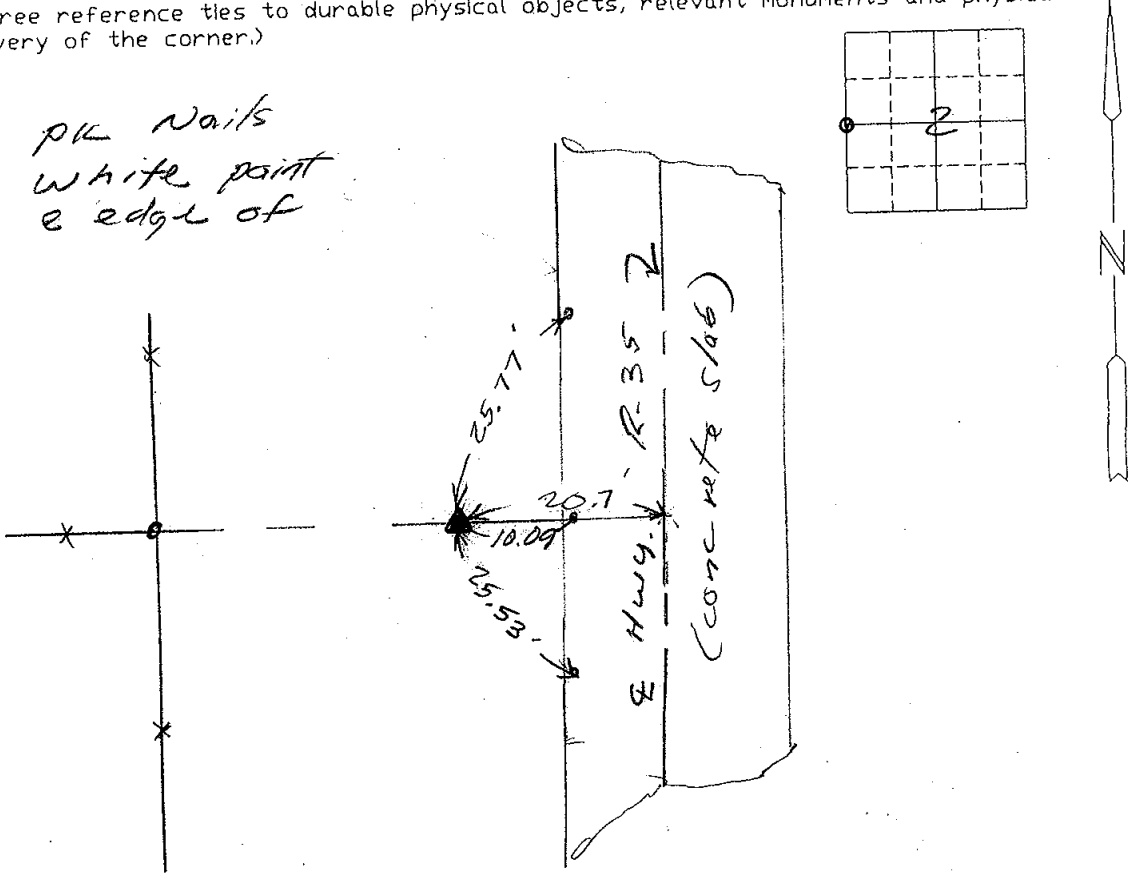
(Show reason for preparing this certificate, the evidence and detailed procedures used in establishing the corner positions and monumentation found or placed.)

Monument Description and Remarks: Set 1/2" rebar w/ orange cap
stamped "LS 13427" Set according to County
Engineers plans L-3114.

PLAN-VIEW

(Show a minimum of three reference ties to durable physical objects, relevant monuments and physical conditions that will enable recovery of the corner.)

Ref. to p/k Nails
Set in white paint
stripe & edge of
Slab.



I hereby certify that the survey work was completed and this certificate was prepared by me or under my direct personal supervision and that I am a duly Licensed Land Surveyor under the laws of the State of Iowa

Signature: Craig S. Boldman
Craig S. Boldman

Date: 8/30/02 Reg. No. 13427

List Corners to be Indexed

Corners	Section	Twp	Range
W 1/4	2	74N	26W

