

REC \$ 5<sup>00</sup>  
AUD \$  
R.M.F. \$ 1<sup>00</sup>

FILED NO. **004193**

BOOK **2002** PAGE **4193**

2002 AUG 27 AM 10:09

COMPUTER   
RECORDED   
COMPARED

MICKI UTSLER  
RECORDER  
MADISON COUNTY, IOWA

VANCE & HOCHSTETLER, P.C., CONSULTING ENGINEERS, WINTERSSET, IOWA (515) 462-3995  
02-134S CHARLES T. VANCE, 110 West Green St., Winterset, Iowa, 50273  
JAMES M HOCHSTETLER, 110 West Green St., Winterset, Iowa 50273

UNITED STATES PUBLIC LAND SURVEY CORNER CERTIFICATE

Land Survey Monuments situated in Section OF 25, Township 77 North, Range 26 West, of the Fifth Principal Meridian, MADISON County, Iowa.  
Previously recorded in \_\_\_\_\_ in County Recorder's Office.  
(book, page, document number, etc.)

(Show reason for preparing this certificate, the evidence and detailed procedures used in establishing the the corner positions and monumentation found or placed.)

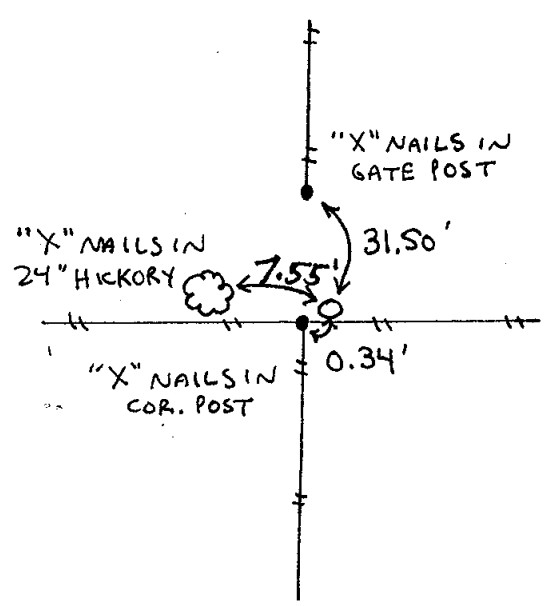
Monument Description and Remarks:

S. 1/4 cor. - Set Capped Iron Rod (C.I.R.) #6808 (1/2" rebar, exposed) at existing Fence corner  
SE cor. - Set C.I.R. #6808 (1/2" rebar, 4" deep) at midpoint between E. 1/4 cor Sec. 25 and E. 1/4 cor. Sec. 36, on the projection of a line through the E. 1/4 cor. Sec. 25 & the centerline of an existing bridge located approx.

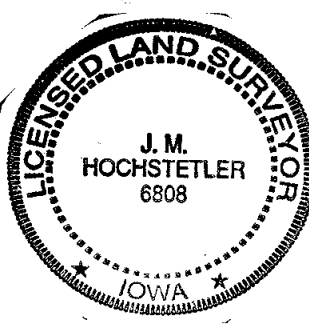
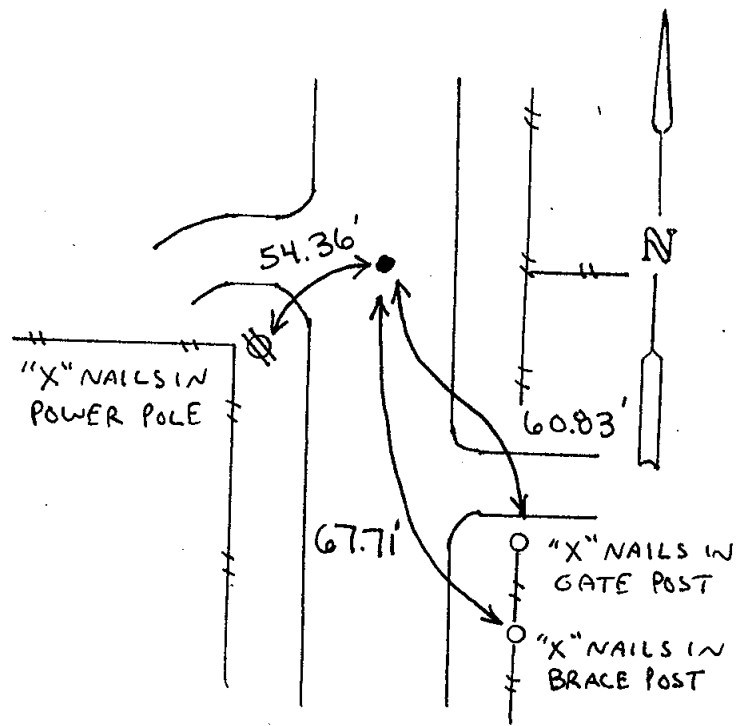
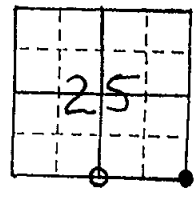
PLAN - VIEW

(Show a minimum of three reference ties to durable physical objects, relevant monuments and physical conditions that will enable recovery of the corner.)

SOUTH 1/4 COR.  
SEC. 25-77-26  
SET C.I.R. #6808



SE CORNER  
SEC. 25-77-26  
Set C.I.R. #6808



I hereby certify that this land surveying document was prepared and the related survey work was performed by me or under my direct personal supervision and that I am a duly licensed Land Surveyor under the laws of the State of Iowa.  
*J.M. Hochstetler*  
J.M. HOCHSTETLER  
License number 6808 Date 8/9/02  
My license renewal date is December 31, 2003  
Pages or sheets covered by this seal: 1

List Corners to be Indexed

Corners	Section	Twp	Range
S. 1/4 cor.	25	77N	26W
SE cor	25	77N	26W