

REC \$ 5⁰⁰
 AUD \$
 R.M.F. \$

FILED NO. 004186

BOOK 2002 PAGE 4186

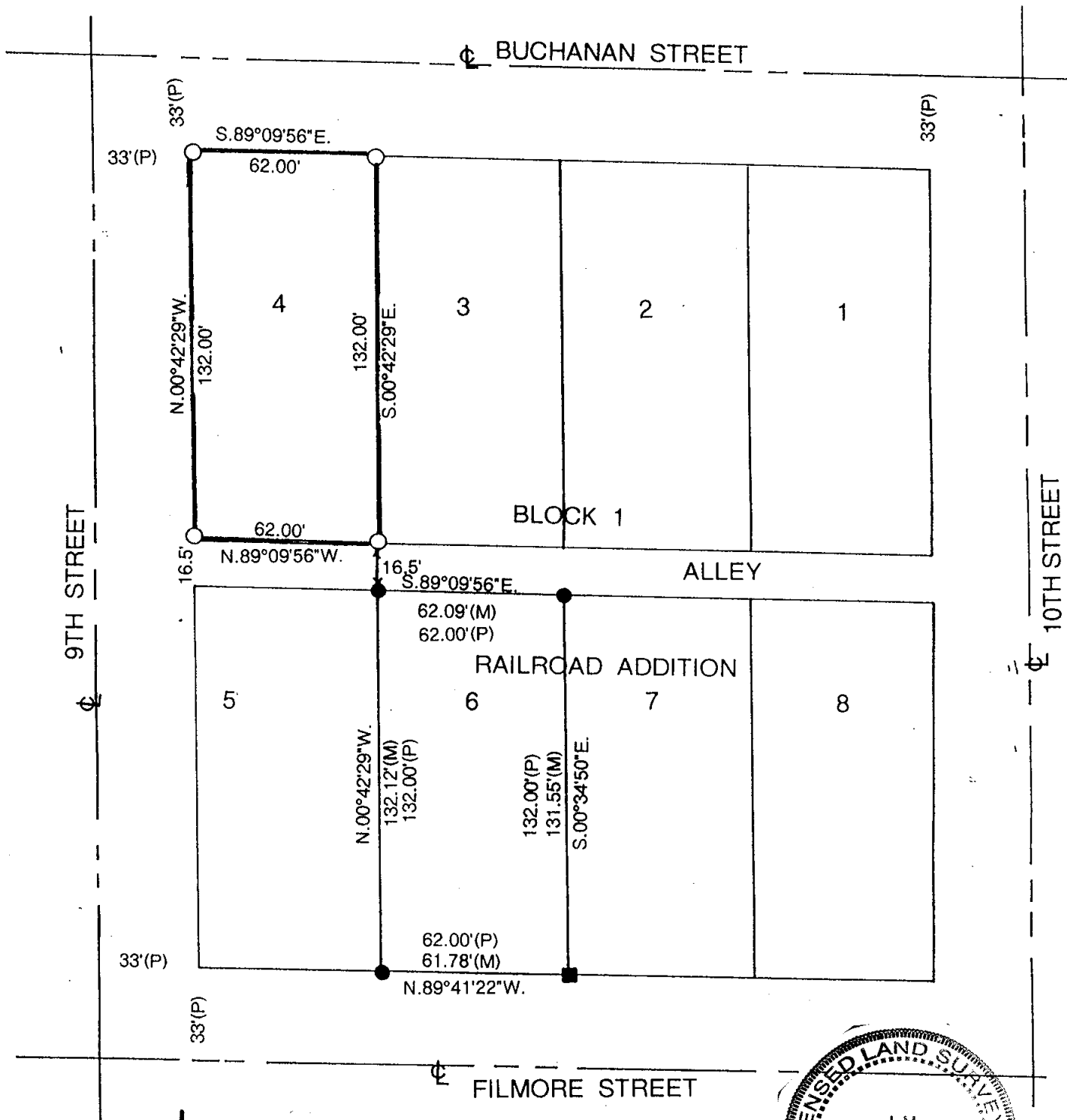
2002 AUG 27 AM 10:02

COMPUTER
 RECORDED
 COMPARED

MICKI UTSLER
 RECORDER
 MADISON COUNTY, IOWA

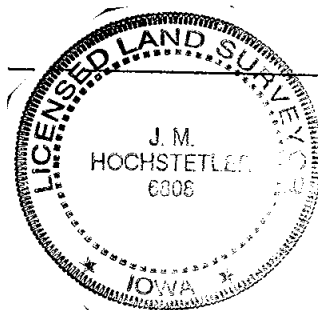
VANCE & HOCHSTETLER, P.C. CONSULTING ENGINEERS, WINTERSET, IOWA (515) 462-3995
 CHARLES T. VANCE, 110 WEST GREEN ST., WINTERSET, IOWA 50273
 JAMES M HOCHSTETLER, 110 WEST GREEN ST., WINTERSET, IOWA 50273

PLAT OF SURVEY OF LOT 4, BLOCK 1 RAILROAD ADDITION TO THE CITY OF WINTERSET, MADISON COUNTY, IOWA OWNED FRONTIER CONSTRUCTION, INC.



SCALE: 1" = 50'
 DATE OF SURVEY: 8-02-2002

- CAPPED IRON ROD (C.I.R.)#6808 SET
- C.I.R. #5041 FOUND
- 1/2" PIPE FOUND
- (M) MEASURED DISTANCE
- (P) PLATTED DISTANCE



I hereby certify that this land surveying document was prepared and the related survey work was performed by me or under my direct personal supervision and that I am a duly licensed Land Surveyor under the laws of the State of Iowa.

J.M. Hochstetler
 J.M. HOCHSTETLER
 License number 6808 Date 8/24/02
 My license renewal date is December 31 2003
 Pages or sheets covered by this seat 1