

004587

FILED NO. _____

BOOK 2002 PAGE 4587

2002 SEP 17 PM 12:19

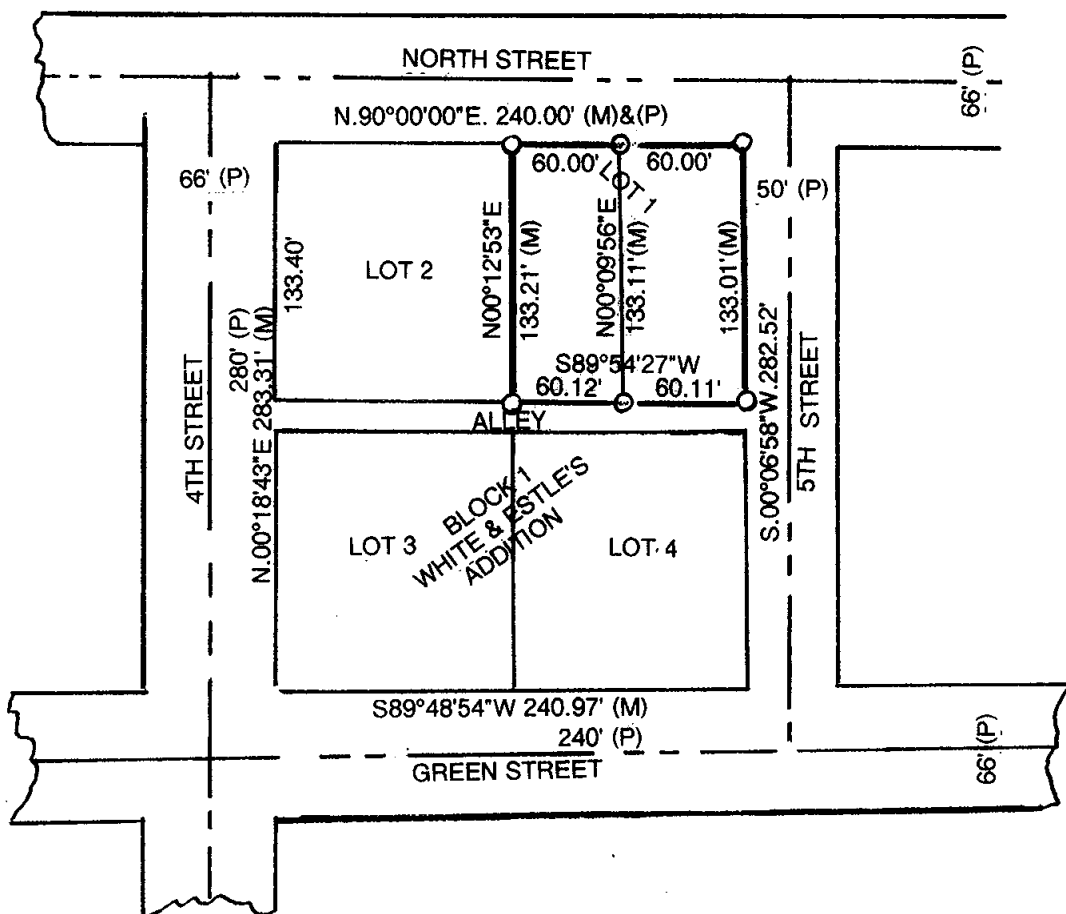
MICKI UTSLER
RECORDER
MADISON COUNTY, IOWA

REC \$ 5.00
AUD \$ _____
R.M.F. \$ 1.00

COMPUTER	<input checked="" type="checkbox"/>
RECORDED	<input checked="" type="checkbox"/>
COMPARED	<input type="checkbox"/>

VANCE & HOCHSTETLER, P.C. CONSULTING ENGINEERS, WINTERSET, IOWA (515) 462-3995
CHARLES T. VANCE, 110 WEST GREEN ST., WINTERSET, IOWA 50273
JAMES M HOCHSTETLER, 110 WEST GREEN ST., WINTERSET, IOWA 50273

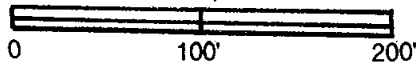
PLAT OF SURVEY OF LOT 1, BLOCK 1 OF WHITE & ESTLE'S ADDITION
TO CITY OF WINTERSET, MADISON COUNTY, IOWA OWNED BY
ANTHONY J. FRANTZEN AND MELISSA B. FRANTZEN.



LEGAL DESCRIPTION:

West Half Lot 1, Block 1, White & Estle's Addition to the City of Winterset, Madison County, Iowa, containing 0.184 acres (7,997 square feet).

East Half Lot 1, Block 1, White & Estle's Addition to the City of Winterset, Madison County, Iowa, containing 0.183 acres (7,991 square feet).



SCALE: 1" = 100'

DATE OF SURVEY = 9/06/2002

- CAPPED IRON ROD (C.I.R.) #6808 SET
- (M) MEASURED DISTANCE
- (P) PLATTED DISTANCE

I hereby certify that this land surveying document was prepared and the related survey work was performed by me or under my direct personal supervision and that I am a duly licensed Land Surveyor under the laws of the State of Iowa.

J.M. Hochstetler
J.M. HOCHSTETLER

License number 6808 Date 9/10/02

My license renewal date is December 31, 2003

Pages or sheets covered by this seal: 1

