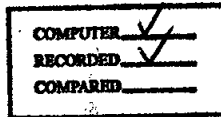


REC \$ 5⁰⁰
AUD \$
R.M.F. \$ 1⁰⁰



003955
FILED NO. _____
BOOK 2002 PAGE 3955
2002 AUG 13 PM 2:58

Prepared By: J. Brian Morrissey, Morrissey Surveying, 1405 Hwy. G28, Otley, IA 50214, Tel. (641) 627-5596

WICKLIFFSLER
RECORDED
MADISON COUNTY, IOWA

UNITED STATES PUBLIC LAND SURVEY CORNER CERTIFICATE OF

Land Survey Monuments situated in Section 27, Township 74 N, Range 26 W, of the Fifth Principal Meridian, Madison County, Iowa.
Previously recorded in Book 1, Page 576 in County Records Office.

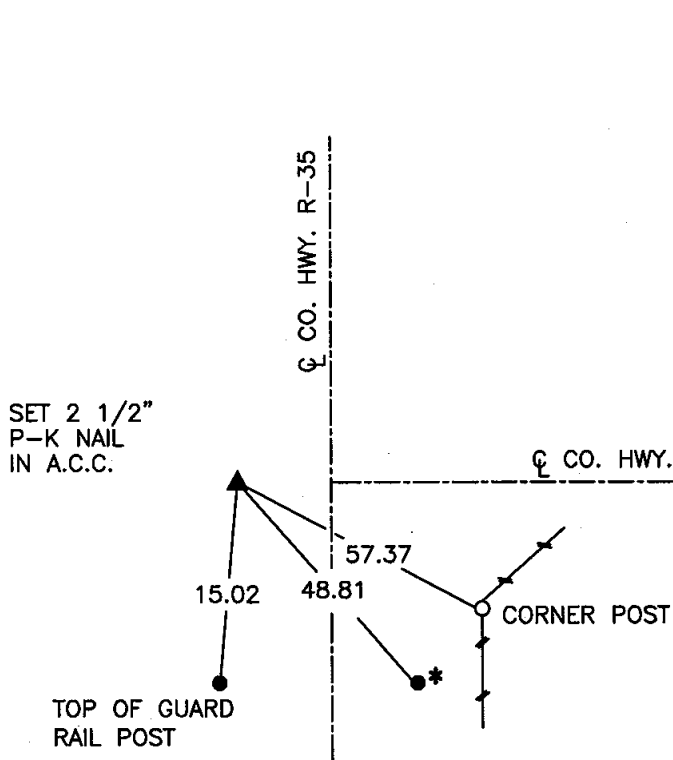
(book, page, document number, etc.)

(Show reason for preparing this certificate, the evidence and detailed procedures used in establishing the corner positions and monumentation found or placed.)

Monument Description and Remarks: Set 2 1/2" P-K nail in A.C.C.. Previous monument removed with road work, one of the three previously recorded ties missing, reset from existing recorded ties and placed new tie, accepted position.

PLAN VIEW

(Show a minimum of three reference ties to durable physical objects, relevant monuments and physical conditions that will enable recovery of the corner.)



* - TOP WOOD BRIDGE RAIL POST

NE. COR., SE. 1/4., NE. 1/4, SEC. 27

NOTE: ALL TIES TO "X" NAILS UNLESS NOTED.



I hereby certify that the survey work was completed and this certificate was prepared by me or under my direct personal supervision and that I am a duly Licensed Land Surveyor under the laws of the State of Iowa.

Signature: J. Brian Morrissey
J. Brian Morrissey

Date: 8/12/02

License number 7995.

My license renewal date is December 31, 2003.

381-02-02