

003061

FILED NO. _____
BOOK 2002 PAGE 3061
2002 JUN 24 PM 2:50

REC \$ 5.00
AUD \$ _____
R.M.F. \$ 1.00

COMPUTER
RECORDED
COMPAZED _____

MICKI UTSLER
RECORDER
MADISON COUNTY IOWA

RETURN TO: BOLDMAN LAND SURVEYING, P.C., BOX 66, WINTERSET, IA 50273 515-462-9242

UNITED STATES PUBLIC LAND SURVEY CORNER CERTIFICATE

OF

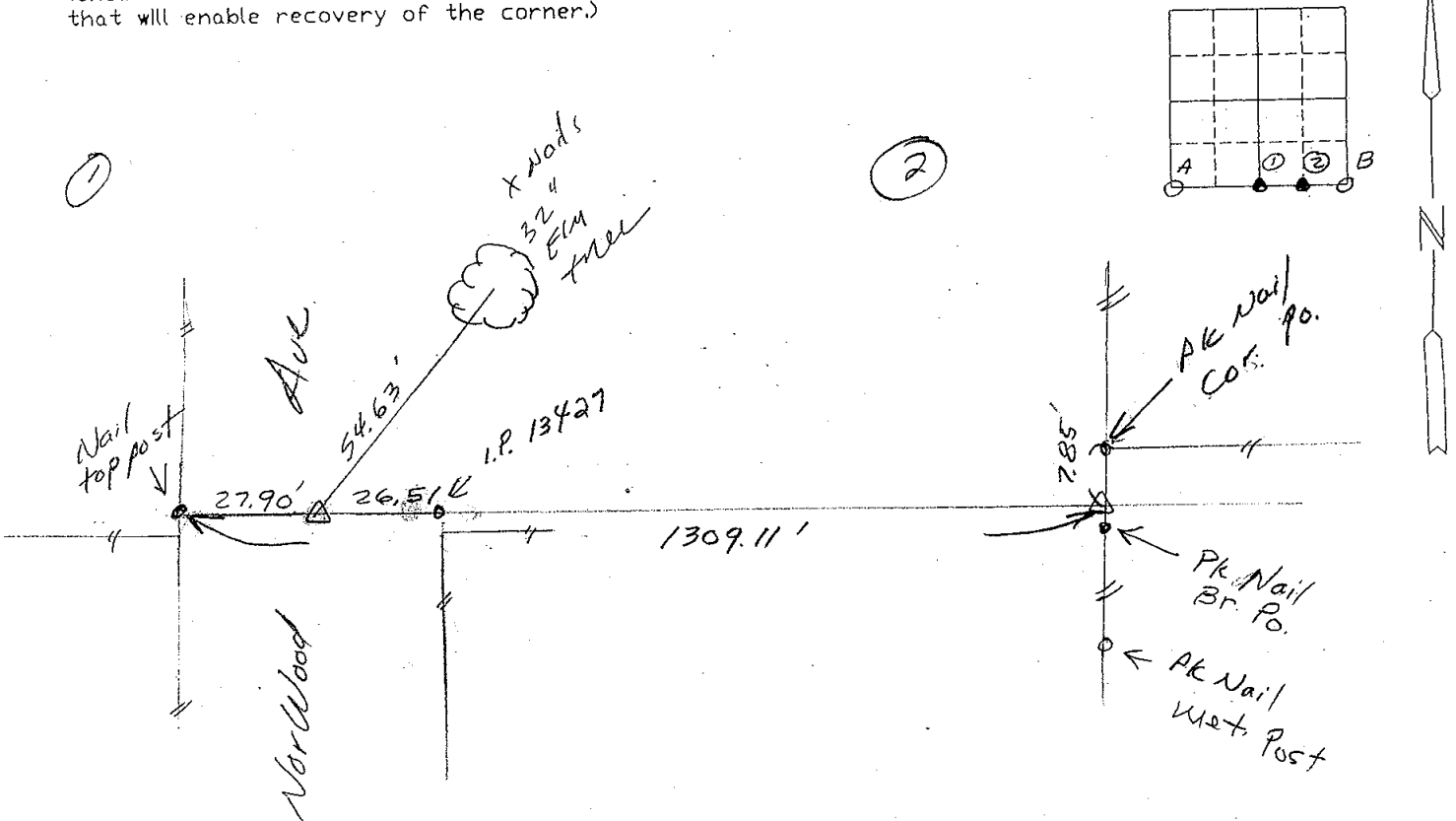
Land Survey Monuments situated in Section 20 Township 75N Range _____
27W of the Fifth Principal Meridian, Madison County, Iowa
Previously recorded in None in County Recorder's Office.
(book, page, document number, etc.)

(show reason for preparing this certificate, the evidence and detailed procedures used in establishing the corner positions and monumentation found or placed.)

Monument Description and Remarks: ① Set at midpoint of A-B
② Set in line A-B at inter. of N-S fence. Fence splits 1/2 mile.

PLAN-VIEW

(Show a minimum of three reference ties to durable physical objects, relevant monuments and physical conditions that will enable recovery of the corner.)



I hereby certify that the survey work was completed and this certificate was prepared by me or under my direct personal supervision and that I am a duly Licensed Land Surveyor under the laws of the State of Iowa

Signature: Craig S. Boldman
Craig S. Boldman

Date: 6/13/02 Reg. No. 13427 Exp. 12/31/02

List Corners to be Indexed

Corners	Section	Twp	Range
5/4	20	75	27
SE cor.	"	"	"
SW 1/4 SE 1/4	"	"	"

SEAL

