

MICKI UTSLER  
RECORDER  
MADISON COUNTY, IOWA

REC \$ 5  
AUD \$  
R.M.F. \$

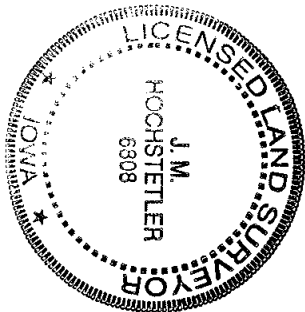
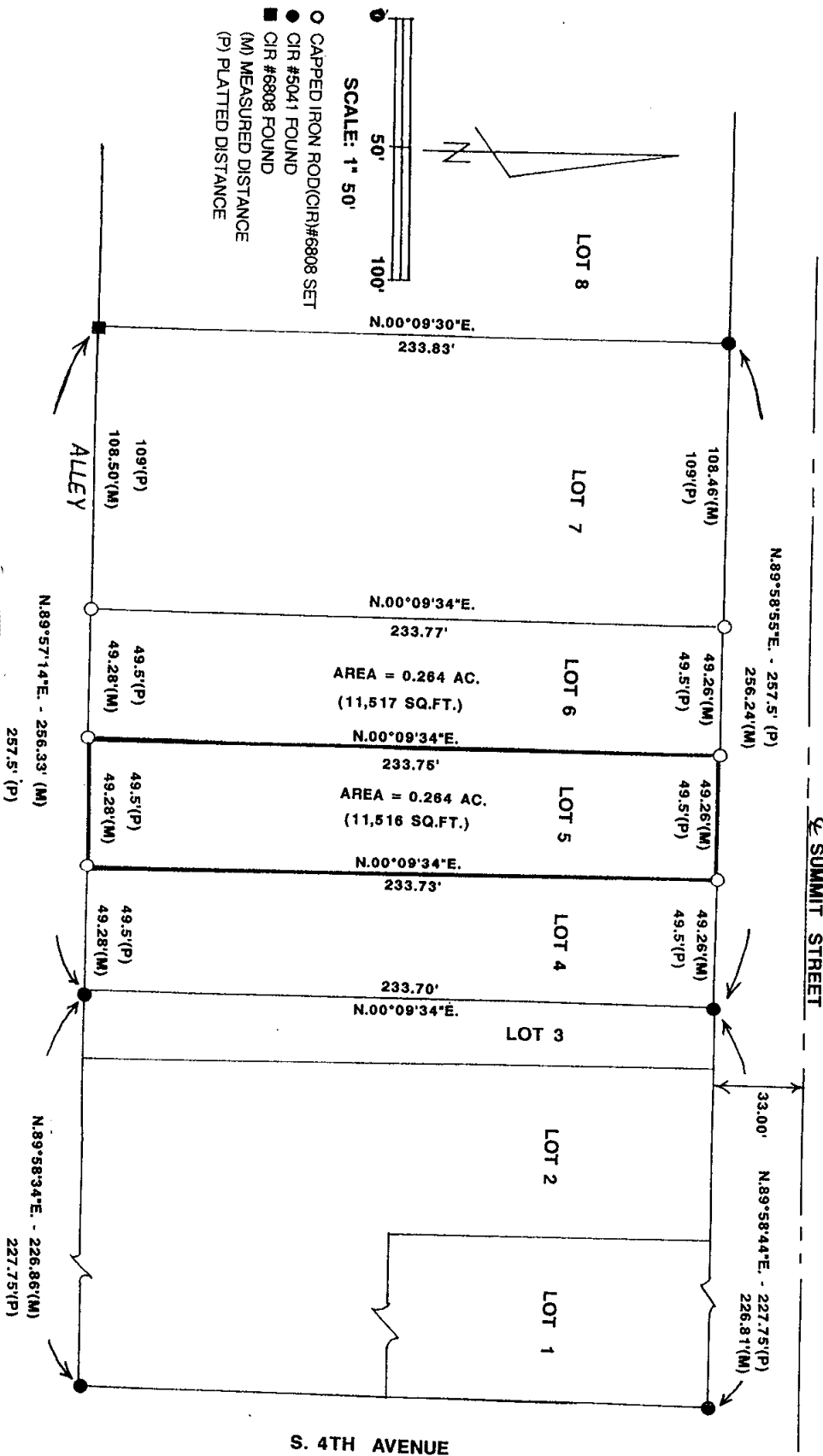
COMPUTER   
RECORDED   
COMPARED \_\_\_\_\_

VANCE & HOCHSTETLER, P.C. CONSULTING ENGINEERS, WINTERSET, IOWA (515) 462-3995

CHARLES T. VANCE, 110 WEST GREEN ST., WINTERSET, IOWA 50273

JAMES M HOCHSTETLER, 110 WEST GREEN ST., WINTERSET, IOWA 50273

PLAT OF SURVEY OF LOT 5, SUBDIVISION OF PART OF THE NORTHWEST QUARTER OF THE NORTHEAST QUARTER, SECTION 1, TOWNSHIP 75 NORTH, RANGE 28 WEST OF THE 5TH P.M., CITY OF WINTERSET, MADISON COUNTY, IOWA OWNED BY DENNIS R. LITTLE, BRENDA S. LITTLE, AND JEANNETTE A. PYE



I hereby certify that this land surveying document was prepared and the related survey work was performed by me or under my direct personal supervision and that I am a duly licensed Land Surveyor under the laws of the State of Iowa.

J.M. HOCHSTETLER

License number 6808

Date 6/14/02

My license renewal date is December 31, 2003

Pages or sheets covered by this seal: 1

S. 4TH AVENUE