

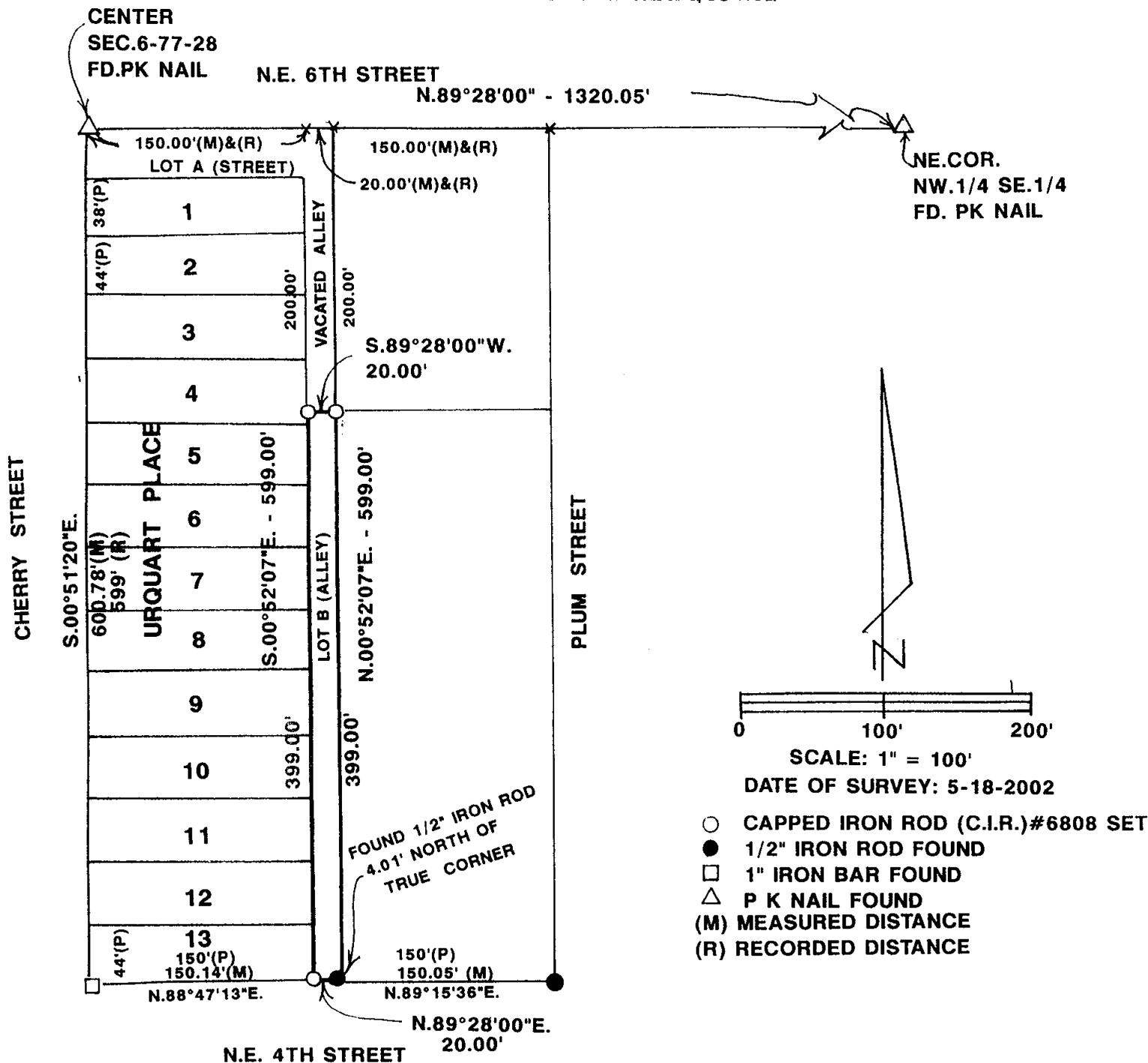
FILED NO. **002849**BOOK **2002** PAGE **2849**

2002 JUN 12 PM 1:07

REC \$ **5⁰⁰**
AUD \$ **1⁰⁰**
R.M.F. \$ **1⁰⁰**COMPUTER ☒RECORDED ☒COMPARED ☐MICKI UTSLER
RECORDER
MADISON COUNTY, IOWA

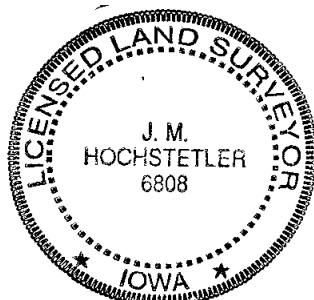
VANCE & HOCHSTETLER, P.C. CONSULTING ENGINEERS, WINTERSET, IOWA (515) 462-3995
 CHARLES T. VANCE, 110 WEST GREEN ST., WINTERSET, IOWA 50273
 JAMES M HOCHSTETLER, 110 WEST GREEN ST., WINTERSET, IOWA 50273

PLAT OF SURVEY FOR GARY ARNBURG OF A PORTION OF LOT B OF URQUART
 PLACE AN OFFICIAL PLAT IN THE CITY OF EARLHAM, MADISON COUNTY, IOWA
 OWNED BY THE CITY OF EARLHAM, IOWA.



LEGAL DESCRIPTION:

The South 399.00 feet of Lot B of Urquart Place an Official Plat in the City of Earlham,
 Madison County, Iowa.



I hereby certify that this land surveying document
 was prepared and the related survey work was
 performed by me or under my direct personal
 supervision and that I am a duly licensed Land
 Surveyor under the laws of the State of Iowa.

J. M. Hochstetler
 J. M. HOCHSTETLER

License number 6808 Date 5/24/02

My license renewal date is December 31, 2003

Pages or sheets covered by this seal: 1