

REC \$ 5¹⁸
 AUD \$ 1¹⁸
 R.M.F. \$ 1¹⁸

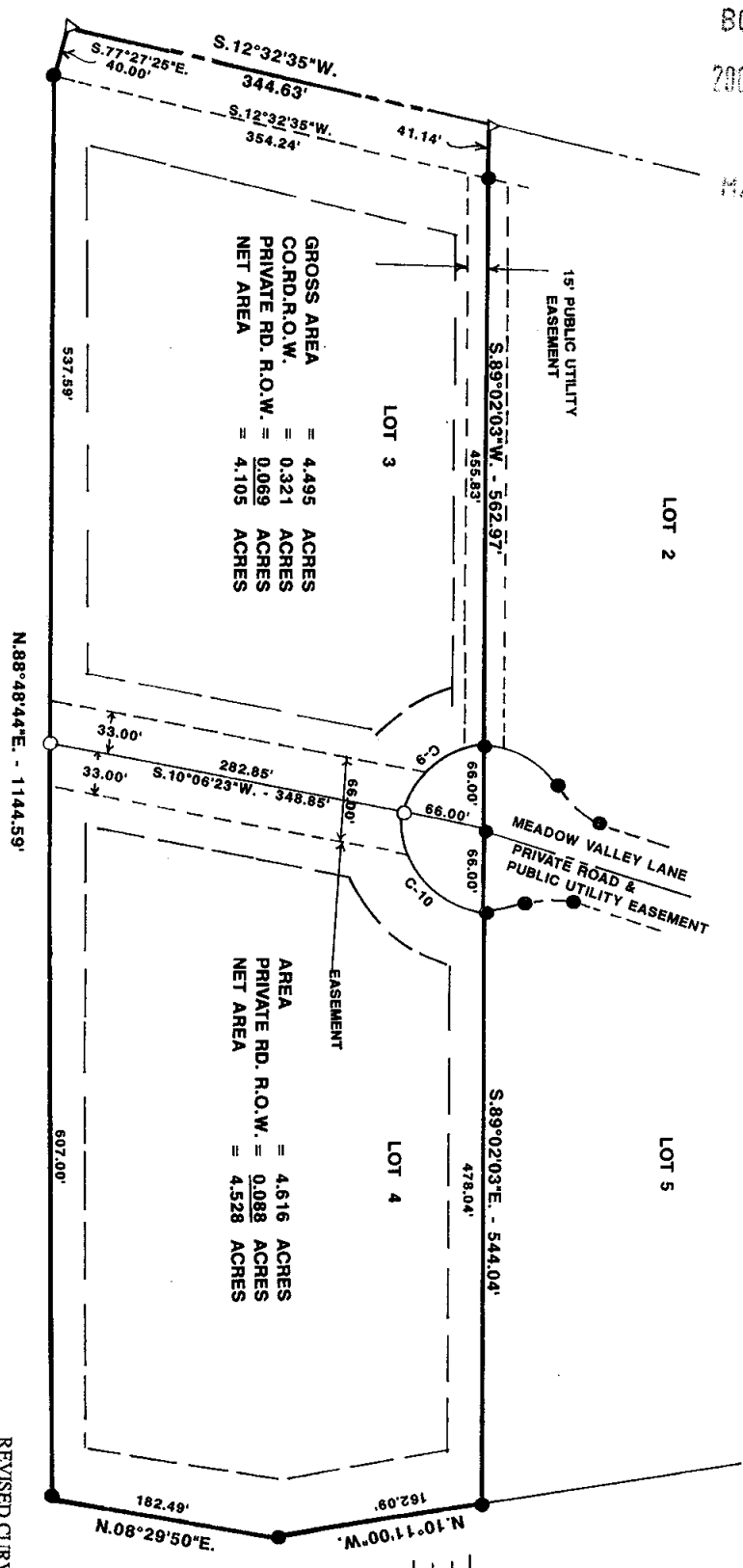
COMPUTER
 RECORDED
 COMPARED

VANCE & HOCHSTETLER, P.C. CONSULTING ENGINEERS, WINTERSET, IOWA (515) 462-3995
 CHARLES T. VANCE, 110 WEST GREEN ST., WINTERSET, IOWA 50273
 JAMES M HOCHSTETLER, 110 WEST GREEN ST., WINTERSET, IOWA 50273

FILED NO. 002673
 BOOK 2002 PAGE 2673
 2002 JUN -3 PM 2:38

MICKI UTSLER
 RECORDER
 MADISON COUNTY, IOWA

AMENDED PLAT OF SURVEY OF LOTS 3 AND 4 OF CLARK TOWER SUBDIVISION,
 IN THE NORTHWEST QUARTER OF SECTION 18, TOWNSHIP 75 NORTH, RANGE 27 WEST OF THE 5TH P.M.,
 MADISON COUNTY, IOWA.

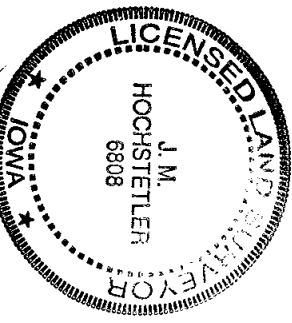


GROSS AREA = 4.495 ACRES
 CO.RD.R.O.W. = 0.321 ACRES
 PRIVATE RD. R.O.W. = 0.069 ACRES
 NET AREA = 4.105 ACRES

AREA = 4.616 ACRES
 PRIVATE RD. R.O.W. = 0.088 ACRES
 NET AREA = 4.528 ACRES

PLAT AMENDED AT THE REQUEST OF THE OWNER: LARRY AND MICKI UTSLER AMENDS LOTS 3 AND 4 AS SHOWN ON CLARK TOWER SUBDIVISION, FINAL PLAT FILED ON JULY 5, 2001 IN BOOK 2001, PAGE 2798-A AT THE MADISON COUNTY RECORDER'S OFFICE.

THE MADISON COUNTY, IOWA RECORDER AND AUDITOR ARE REQUESTED TO PLACE A NOTATION ON THE ORIGINAL PLAT SHOWING THE DATE OF FILING AND BOOK AND PAGE OF RECORDING OF THIS AMENDED PLAT IN COMPLIANCE WITH 354.24, CODE OF IOWA.



I hereby certify that this land surveying document was prepared and the related survey work was performed by me or under my direct personal supervision and that I am a duly licensed Land Surveyor under the laws of the State of Iowa.

J.M. Hochstetler
 J.M. HOCHSTETLER
 License number 6808 Date 5/31/02
 My license renewal date is December 31 2003
 Pages or sheets covered by this seat: 1

CHORD BEARING = S40°25'47"E. N49°34'13"E
 CHORD = 83.90'

C-9	C-10
Δ = 78°55'40"	101°04'20"
T = 54.34'	80.17'
R = 66.00'	66.00'
L = 90.02'	116.43'
	101.91'

REVISED CURVE DATA

DATE OF SURVEY: JUNE 1, 2002
 CAPPED IRON ROD (C.I.R.# 6808 SET)
 P.I./ NAIL FOUND
 & ROAD
 CO.RD. R.O.W.
 EASEMENT LIMITS
 BUILDING SETBACKS
 FRONT YARD = 50'
 REAR YARD = 50'
 SIDE YARD = 25'