

FILED NO. 002084

BOOK 2002 PAGE 2084

2002 MAY -1 AM 11:47

MICKI UTSLER
RECORDER
MADISON COUNTY, IOWA

REC \$ 5⁰⁰
AUD \$ _____
R.M.F. \$ 1⁰⁰

COMPUTER
RECORDED
COMPARED _____

Prepared by: Boldman Land Surveying, L.L.C., P.O. Box 66, Winterset, IA 50273 (515-462-9242)

UNITED STATES PUBLIC LAND SURVEY CORNER CERTIFICATE

OF

Land Survey Monuments situated in Section 28, Township 77 North, Range 26 West, of the Fifth Principal Meridian, Madison County, Iowa

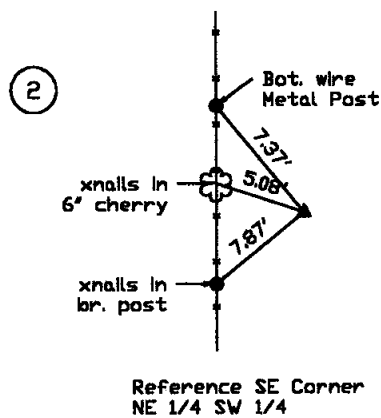
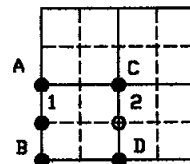
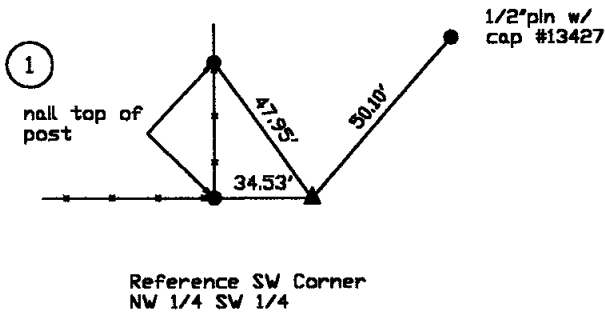
Previously recorded in No Records Found in County Recorder's Office, (book, page, document number, etc.)

(show reason for preparing this certificate, the evidence and detailed procedures used in establishing the corner positions found or placed.)

Monument Description and Remarks: 1. Found iron pipe and cap #11582 that fits spli distance between a & b. Old reference ties were destroyed by road grading. 2. Set #4 rebar and cap #13427 at split of c & d.

PLAN-VIEW

(Show a minimum of three reference ties to durable physical objects, relevant monuments and physical conditions that will enable recovery of the corner.)



I HEREBY CERTIFY THAT THIS LAND SURVEYING DOCUMENT WAS PREPARED AND THE RELATED SURVEY WORK WAS PERFORMED BY ME OR UNDER MY DIRECT PERSONAL SUPERVISION AND THAT I AM A DULY LICENSED LAND SURVEYOR UNDER THE LAWS OF THE STATE OF IOWA.

SIGNATURE: *Craig S. Boldman*

NAME: CRAIG S. BOLDMAN

DATE: 4/30/02

MY LICENSE RENEWAL DATE IS: DECEMBER 31, 2002

List Corners to be Indexed

Corners	Section	Twp	Range
SW Corner NW 1/4 SW 1/4	28	77	26
SE Corner NE 1/4 SW 1/4	28	77	26

