

002082

REC \$ 5.00  
AUD \$  
R.M.F. \$ 1.00

COMPUTER   
RECORDED   
COMPARED

FILED NO. \_\_\_\_\_  
BOOK 2002 PAGE 2082  
2002 MAY -1 AM 11:45

NICKI UTSLER  
RECORDER  
MADISON COUNTY, IOWA

Prepared by: Boldman Land Surveying, L.L.C., PO Box 66, Winterset, IA 50273

(515-462-9242)

### UNITED STATES PUBLIC LAND SURVEY CORNER CERTIFICATE

OF

Land Survey Monuments situated in Section 31, Township 74 North, Range 27 West, of the Fifth Principal Meridian, Madison County, Iowa

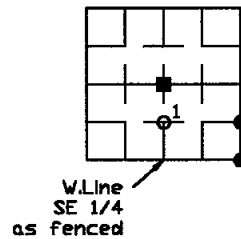
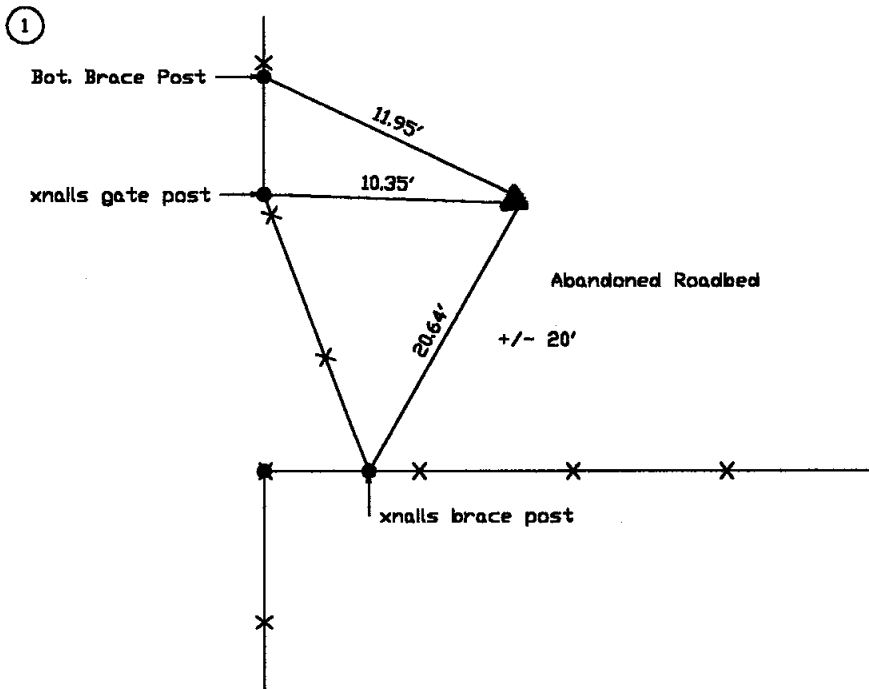
Previously recorded in None In County Recorder's Office, (book, page, document number, etc.)

(show reason for preparing this certificate, the evidence and detailed procedures used in establishing the corner positions found or placed.)

Monument Description and Remarks: 1 Set 1/2' pin with cap at calculated split distance using intersection of south section line with west line SE 1/4 and a 4 way fence corner post used as Center of Section. Point is 20' north of a an old abandoned road fence and lies approx. in center of old roadbed.

#### PLAN-VIEW

(Show a minimum of three reference ties to durable physical objects, relevant monuments and physical conditions that will enable recovery of the corner.)



I HEREBY CERTIFY THAT THIS LAND SURVEYING DOCUMENT WAS PREPARED AND THE RELATED SURVEY WORK WAS PERFORMED BY ME OR UNDER MY DIRECT PERSONAL SUPERVISION AND THAT I AM A DULY LICENSED LAND SURVEYOR UNDER THE LAWS OF THE STATE OF IOWA.

SIGNATURE: *Craig S. Boldman*

NAME: CRAIG S. BOLDMAN

DATE: 5/30/00

MY LICENSE RENEWAL DATE IS: DECEMBER 31, 2002

#### List Corners to be Indexed

Corners	Section	Twp	Range
NW Corner SW 1/4 SE 1/4	31	74	27

