

REC \$ 10<sup>00</sup>  
 AUD \$       
 R.M.F. \$ 1<sup>00</sup>

COMPUTER   
 RECORDED   
 COMPARED

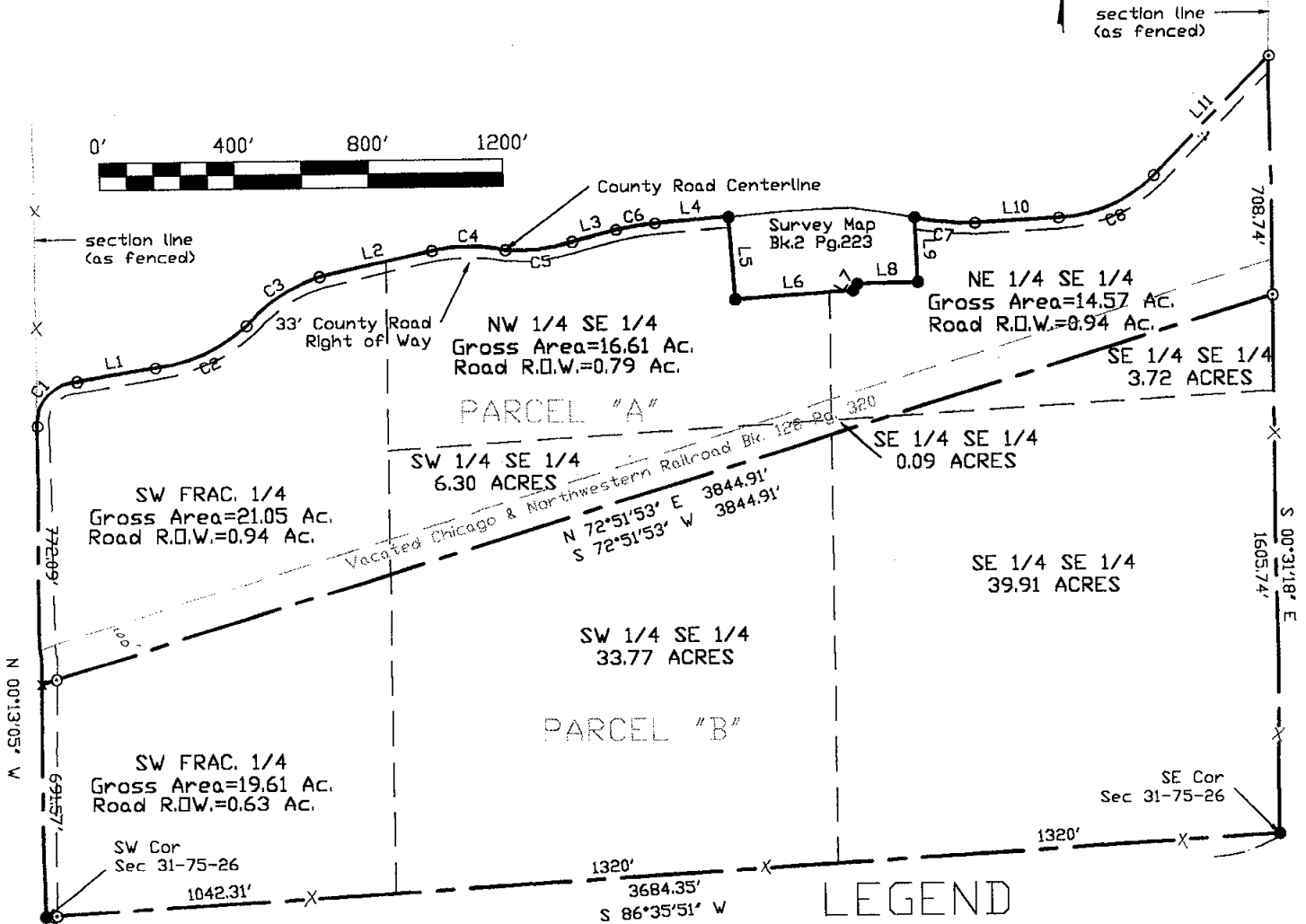
HICKLUTSLER  
 RECORDER  
 MADISON COUNTY, IOWA

Prepared by: Boldman Land Surveying, L.L.C., P.O. Box 66, Winterset, Ia. 50273. (515)462-9242

Sheet 1 of 2

**Parcel "A"**  
 Area by 1/4-1/4 Section  
 SW Frac. 1/4= 21.05 Ac. (-0.94 Ac. Row)  
 NW 1/4 SE 1/4= 16.61 Ac. (-0.79 Ac. Row)  
 SW 1/4 SE 1/4= 6.30 Ac.  
 NE 1/4 SE 1/4= 14.57 Ac. (-0.94 Ac. Row)  
 SE 1/4 SE 1/4= 0.09 Ac.

**Parcel "B"**  
 Area by 1/4-1/4 Section  
 SW Frac. 1/4= 19.61 Ac. (-0.63 Ac. Row)  
 SW 1/4 SE 1/4= 33.77 Ac.  
 SE 1/4 SE 1/4= 39.91 Ac.  
 NE 1/4 SE 1/4= 3.72 Ac.

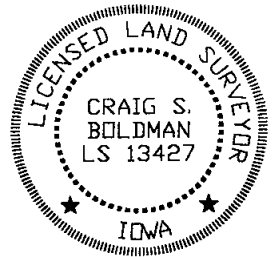


**LEGEND**

These standard symbols will be found in the drawing.  
 —X—X— fence line  
 ● found 1/2" rebar w/cap #5041  
 ○ placed 1/2" rebar w/cap #13427

LINE	BEARING	DISTANCE	LINE	BEARING	DISTANCE
L1	N 80°36'15" E	238.33'	L8	N 88°30'35" E	181.67'
L2	N 77°08'39" E	343.24'	L9	N 02°37'53" W	190.31'
L3	N 75°02'59" E	135.93'	L11	S 44°49'14" W	495.08'
L4	N 85°14'55" E	219.78'			
L5	S 04°06'12" E	248.97'			
L6	N 86°11'51" E	352.19'			
L7	N 31°36'11" E	22.97'			

CURVE	RADIUS	ARC LENGTH	CHORD LENGTH	CHORD BEARING	DELTA ANGLE	TANGENT
C1	121.38'	198.72'	177.26'	N 42°13'03" E	93°48'19"	129.72'
C2	491.86'	302.46'	297.72'	S 65°15'26" W	35°14'02"	156.19'
C3	486.63'	264.29'	261.05'	N 56°37'34" E	31°07'01"	135.49'
C4	525.97'	220.43'	218.82'	N 89°59'38" E	24°00'43"	111.86'
C5	516.78'	200.38'	199.13'	N 83°41'49" E	22°13'00"	101.47'
C6	962.53'	117.57'	117.49'	N 80°50'21" E	06°59'54"	58.86'
C7	1001.64'	180.23'	179.99'	S 84°58'48" E	10°18'34"	90.36'
C8	420.70'	315.91'	308.54'	N 66°38'37" E	43°01'28"	165.82'



I HEREBY CERTIFY THAT THIS LAND SURVEYING DOCUMENT WAS PREPARED AND THE RELATED SURVEY WORK WAS PERFORMED BY ME OR UNDER MY DIRECT PERSONAL SUPERVISION AND THAT I AM A DULY LICENSED LAND SURVEYOR UNDER THE LAWS OF THE STATE OF IOWA.

SIGNATURE: *Craig S. Boldman*  
 NAME: CRAIG S. BOLDMAN  
 DATE: 5/21/02  
 MY LICENSE RENEWAL DATE IS: DECEMBER 31, 2002  
 Cover: sheet s 1, 2

*plat of survey*

REQUESTED BY: Paul Havick	BOLDMAN LAND SURVEYING, L.L.C. P.O. BOX 66 WINTERSET, IA. 50273 (515)462-9242
SURVEYED 5/6-15/02	SCALE 1" = 400'
PROJECT NO. 02021	DATE 5/20/02
OWNER Paul Havick	

Parcel "A"- Part of the Southeast Quarter (SE 1/4) and Part of the Southwest Fractional Quarter (SW Frac.1/4) of Section 31, Township 75 North, Range 26 West of the 5th P.M., lying South of the County Road, Madison County, Iowa, described as follows:

Beginning At A Point That Is N 00 DEGREES 13 MINUTES 05 SECONDS, 619.57' from The Southwest Corner Of Said Section 31;

Thence N 00 DEGREES 13 MINUTES 05 SECONDS W A Distance Of 772.09' to an Intersection with the Centerline of a County Road;  
Thence With A Curve  
Turning To The Right  
With An Arc Length Of 198.72',  
With A Radius Of 121.38',  
With A Chord Bearing Of N 42 DEGREES 13 MINUTES 03 SECONDS E,  
With A Chord Length Of 177.26',  
Thence N 80 DEGREES 36 MINUTES 15 SECONDS E A Distance Of 238.33';  
Thence With A Curve  
Turning To The Left  
With An Arc Length Of 302.46',  
With A Radius Of 491.86',  
With A Chord Bearing Of N 65 DEGREES 15 MINUTES 26 SECONDS E,  
With A Chord Length Of 297.72',  
Thence With A Curve  
Turning To The Right  
With An Arc Length Of 264.29',  
With A Radius Of 486.63',  
With A Chord Bearing Of N 56 DEGREES 37 MINUTES 34 SECONDS E,  
With A Chord Length Of 261.05',  
Thence N 77 DEGREES 08 MINUTES 39 SECONDS E A Distance Of 343.24';  
Thence With A Curve  
Turning To The Right  
With An Arc Length Of 220.43',  
With A Radius Of 525.97',  
With A Chord Bearing Of N 89 DEGREES 59 MINUTES 38 SECONDS E,  
With A Chord Length Of 218.82',  
Thence With A Curve  
Turning To The Left  
With An Arc Length Of 200.38',  
With A Radius Of 516.78',  
With A Chord Bearing Of N 83 DEGREES 41 MINUTES 49 SECONDS E,  
With A Chord Length Of 199.13',  
Thence N 75 DEGREES 02 MINUTES 59 SECONDS E A Distance Of 135.93';  
Thence With A Curve  
Turning To The Right  
With An Arc Length Of 117.57',  
With A Radius Of 962.53',  
With A Chord Bearing Of N 80 DEGREES 50 MINUTES 21 SECONDS E,  
With A Chord Length Of 117.49',  
Thence N 85 DEGREES 14 MINUTES 55 SECONDS E A Distance Of 219.78';  
Thence S 04 DEGREES 06 MINUTES 12 SECONDS E A Distance Of 248.97';  
Thence N 86 DEGREES 11 MINUTES 51 SECONDS E A Distance Of 352.19';  
Thence N 31 DEGREES 36 MINUTES 11 SECONDS E A Distance Of 22.97';  
Thence N 88 DEGREES 30 MINUTES 35 SECONDS E A Distance Of 181.67';  
Thence N 02 DEGREES 37 MINUTES 53 SECONDS W A Distance Of 190.31';  
Thence With A Curve  
Turning To The Left  
With An Arc Length Of 180.23',  
With A Radius Of 1001.64',  
With A Chord Bearing Of S 84 DEGREES 58 MINUTES 48 SECONDS E,  
With A Chord Length Of 179.99',  
Thence N 86 DEGREES 50 MINUTES 43 SECONDS E A Distance Of 248.76';  
Thence With A Curve  
Turning To The Left  
With An Arc Length Of 315.91',  
With A Radius Of 420.70',  
With A Chord Bearing Of N 66 DEGREES 38 MINUTES 37 SECONDS E,  
With A Chord Length Of 308.54',  
Thence N 44 DEGREES 49 MINUTES 14 SECONDS E A Distance Of 495.08';  
Thence S 00 DEGREES 13 MINUTES 23 SECONDS E A Distance Of 708.74';  
Thence S 72 DEGREES 51 MINUTES 53 SECONDS W A Distance Of 3844.91';  
to the point of beginning, Containing 58.62 Acres of Land Including 2.67 Acres of County Road Right of Way.

Parcel "B"- Part of the Southeast Quarter (SE 1/4) and Part of the Southwest Fractional Quarter (SW Frac.1/4) of Section 31, Township 75 North, Range 26 West of the 5th P.M., lying South of the County Road, Madison County, Iowa, described as follows:

Beginning At The Southwest Corner Of Said Section 31;

Thence N 00 DEGREES 13 MINUTES 05 SECONDS W A Distance Of 691.57';  
Thence N 72 DEGREES 51 MINUTES 53 SECONDS E A Distance Of 3844.91';  
Thence S 00 DEGREES 13 MINUTES 23 SECONDS E A Distance Of 1605.74';  
Thence S 86 DEGREES 35 MINUTES 51 SECONDS W A Distance Of 3684.35';  
to the point of beginning, Containing 97.00 Acres of Land Including 0.63 Acres of County Road Right of Way.