

REC \$ 5⁰⁰
 AUD \$ _____
 R.M.F. \$ 1⁰⁰

COMPUTER
 RECORDED
 COMPARED _____

MICKI UTSLER
 RECORDER
 MADISON COUNTY, IOWA

Prepared by: Boldman Land Surveying, L.L.C., P.O. Box 66, Winterset, Ia. 50273. Phone 515-462-9242

UNITED STATES PUBLIC LAND SURVEY CORNER CERTIFICATE
 OF

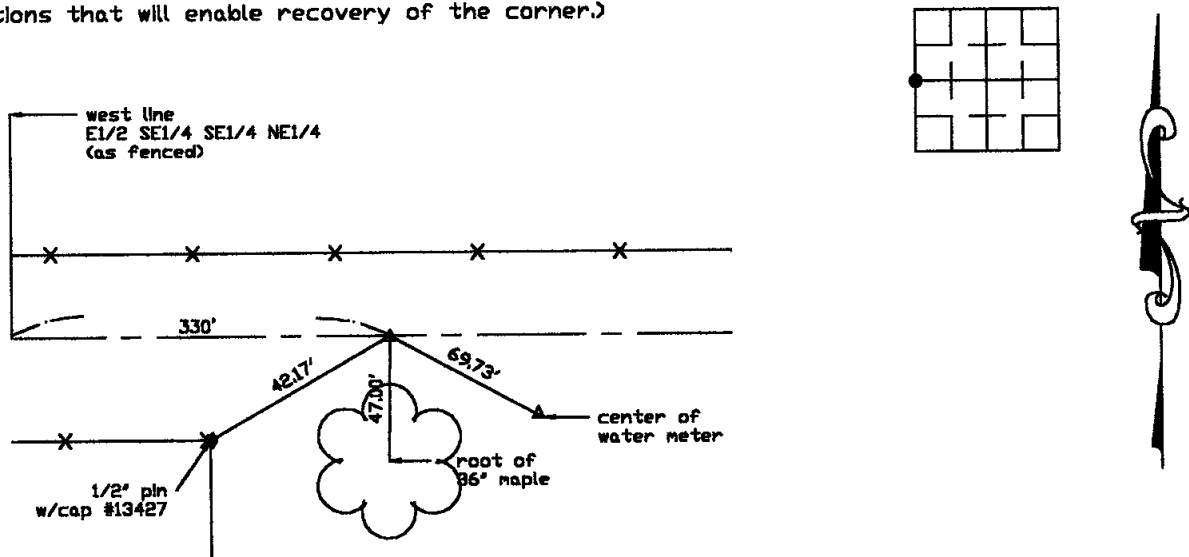
Land Survey Monuments situated in Section 4, Township 75 North, Range 28 West, of the Fifth Principal Meridian, Madison County, Iowa
 Previously recorded in None found in County Recorder's Office,
 (book, page, document number, etc.)

(Show reason for preparing this certificate, the evidence and detailed procedures used in establishing the corner positions found or placed.) All monuments placed are 1/2"x24" rebar with orange plastic cap stamped 'LS13427'

Monument Description and Remarks: Set 330' east from west line of E1/2 SE1/4 SE1/4 NE1/4 of Section 5 as fenced.

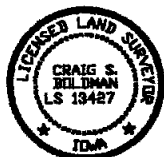
PLAN-VIEW

(Show a minimum of three reference ties to durable physical objects, relevant monuments and physical conditions that will enable recovery of the corner.)



I HEREBY CERTIFY THAT THIS LAND SURVEYING DOCUMENT WAS PREPARED AND THE RELATED SURVEY WORK WAS PERFORMED BY ME OR UNDER MY DIRECT PERSONAL SUPERVISION AND THAT I AM A DULY LICENSED LAND SURVEYOR UNDER THE LAWS OF THE STATE OF IOWA.

SIGNATURE: Craig S. Boldman
 NAME: CRAIG S. BOLDMAN
 DATE: 5/16/02
 MY LICENSE RENEWAL DATE IS: DECEMBER 31, 2002



List Corners to be Indexed

Corners	Section	Twp	Range
W 1/4	4	75	28