

2002 MAY 17 AM 8:29

MICKI UTSLER
RECORDER
MADISON COUNTY, IOWA

REC \$ 5⁰⁰
AUD \$ _____
R.M.F. \$ 1⁰⁰

COMPUTER
RECORDED
COMPARED _____

Prepared by: Boldman Land Surveying, L.L.C., P.O. Box 66, Winterset, Ia. 50273. Phone 515-462-9242

UNITED STATES PUBLIC LAND SURVEY CORNER CERTIFICATE

OF

Land Survey Monuments situated in Section 12, Township 74 North, Range 26 West, of the Fifth Principal Meridian, Madison County, Iowa

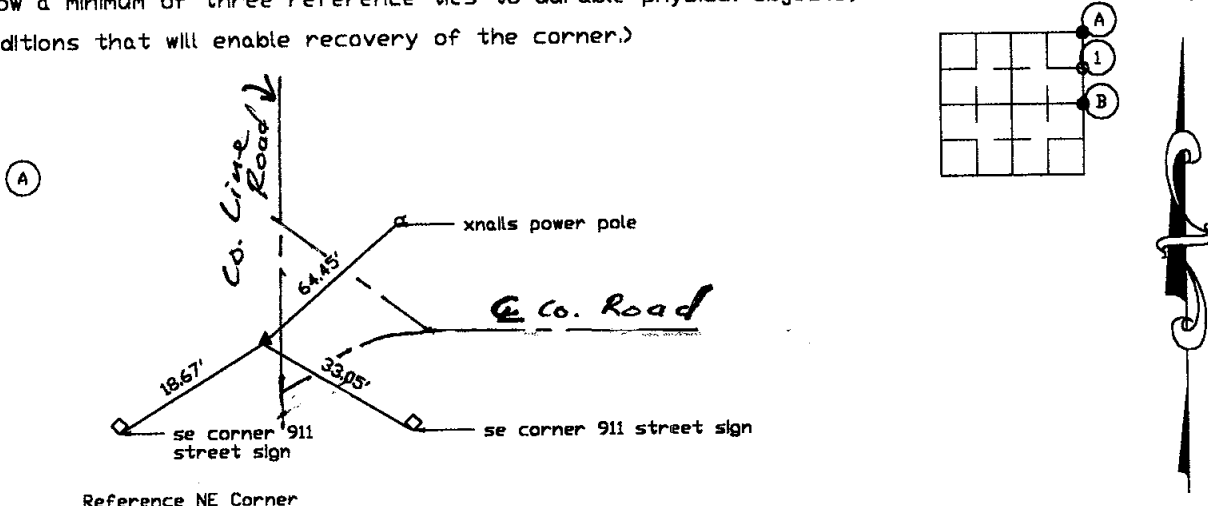
Previously recorded in None found In County Recorder's Office, (book, page, document number, etc.)

(show reason for preparing this certificate, the evidence and detailed procedures used in establishing the corner positions found or placed.)

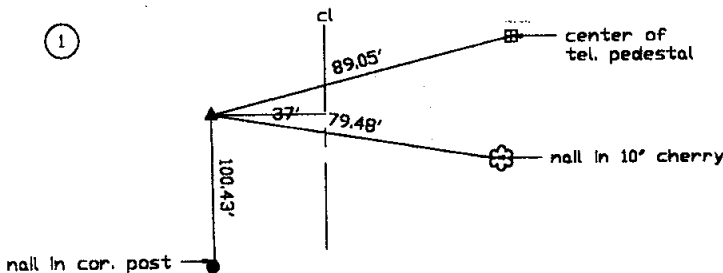
Monument Description and Remarks: (A) Found pin and cap #5041 from survey recorded Irregular Plat Book 3 Page 2. IDOT Corner Stone Map indicates a stone but it was not recovered. The pin was accepted as the section corner. (2) Set 1/2' pin and cap at split distance between A and B.

PLAN-VIEW

(Show a minimum of three reference ties to durable physical objects, relevant monuments and physical conditions that will enable recovery of the corner.)



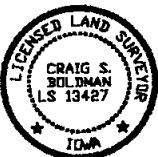
Reference NE Corner



Reference SE Corner NE 1/4 NE 1/4

I HEREBY CERTIFY THAT THIS LAND SURVEYING DOCUMENT WAS PREPARED AND THE RELATED SURVEY WORK WAS PERFORMED BY ME OR UNDER MY DIRECT PERSONAL SUPERVISION AND THAT I AM A DULY LICENSED LAND SURVEYOR UNDER THE LAWS OF THE STATE OF IOWA

SIGNATURE: Craig S. Boldman
NAME: CRAIG S. BOLDMAN
DATE: 5/16/02
MY LICENSE RENEWAL DATE IS: DECEMBER 31, 2002



List Corners to be Indexed

Corners	Section	Twp	Range
NE Corner	12	74	26
SE Corner NE 1/4 NE 1/4	12	74	26