

REC \$ 5<sup>00</sup>  
 AUD \$  
 R.M.F. \$

COMPUTER   
 RECORDED   
 COMPARED

Prepared by: Boldman Land Surveying, L.L.C., P.O. Box 66, Winterset, Ia. 50273. Phone 515-462-9242

UNITED STATES PUBLIC LAND SURVEY CORNER CERTIFICATE  
 OF

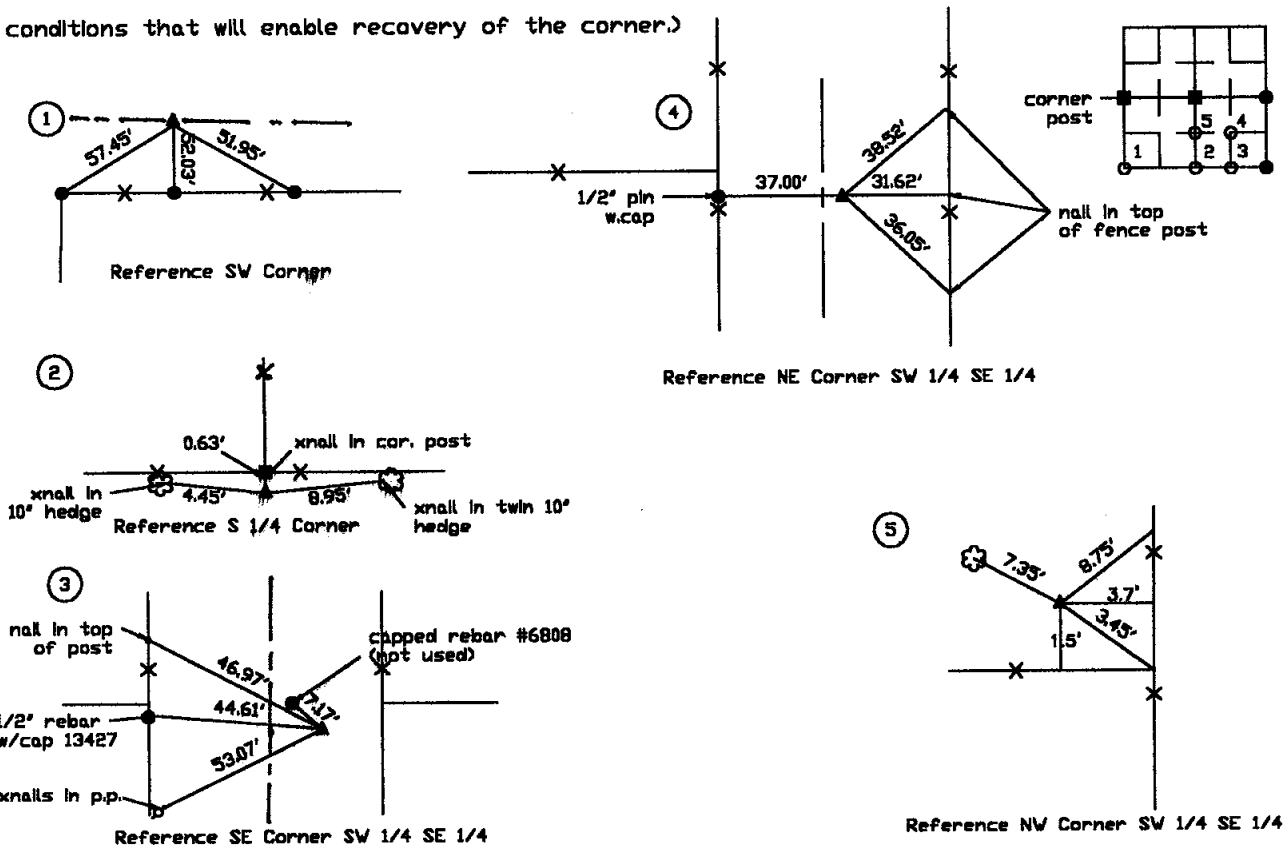
Land Survey Monuments situated in Section 1, Township 75 North, Range 29 West, of the Fifth Principal Meridian, Madison County, Iowa  
 Previously recorded in none except as shown by survey in book 3 page 501 in County Recorder's Office, (book, page, document number, etc.)

(show reason for preparing this certificate, the evidence and detailed procedures used in establishing the corner positions found or placed.) all monuments are 1/2"x24" rebar with orange plastic cap stamped LS 13427

Monument Description and Remarks: 1 Set monument using southerly extension of west section line fence to center of road. 2 set monument at south side of ancient fence post. Post nearly splits mile evenly 3 Found pin #6808 not accepted. set pin at split of 1/2 mile 4 set at center of 1/4 section using found monuments. Agrees with fence west. 5 set at midpt of 1/2 mile using found corner posts.

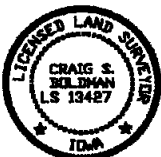
PLAN-VIEW

(Show a minimum of three reference ties to durable physical objects, relevant monuments and physical conditions that will enable recovery of the corner.)



I HEREBY CERTIFY THAT THIS LAND SURVEYING DOCUMENT WAS PREPARED AND THE RELATED SURVEY WORK WAS PERFORMED BY ME OR UNDER MY DIRECT PERSONAL SUPERVISION AND THAT I AM A DULY LICENSED LAND SURVEYOR UNDER THE LAWS OF THE STATE OF IOWA.

SIGNATURE: *Craig S. Boldman*  
 NAME: CRAIG S. BOLDMAN  
 DATE: *5/16/02*  
 MY LICENSE RENEWAL DATE IS: DECEMBER 31, 2002



List Corners to be Indexed

Corners	Section	Twp	Range
SW	1	75	29
S1/4	1	75	29
SE SW1/4 SE1/4	1	75	29
NE SW1/4 SE1/4	1	75	29
NW SW1/4 SE1/4	1	75	29