

REC \$ 5⁰⁰
AUD \$ _____
R.M.F. \$ 1⁰⁰

COMPUTER
RECORDED
COMPARED _____

MICKI UTSLER
RECORDER
MADISON COUNTY, IOWA

RETURN TO : BOLDMAN LAND SURVEYING, P.C., BOX 66, WINTERSSET, IA 50273 515-462-9242

UNITED STATES PUBLIC LAND SURVEY CORNER CERTIFICATE

OF

Land Survey Monuments situated in Section 5, Township 74 N, Range 26 W, of the Fifth Principal Meridian, Madison County, Iowa
Previously recorded in Nase In County Recorder's Office.
(book, page, document number, etc.)

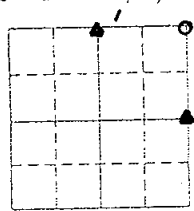
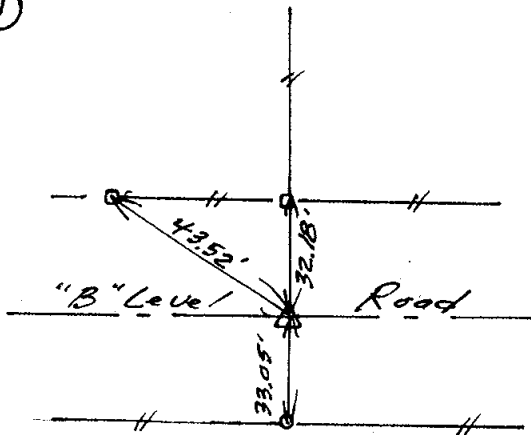
(show reason for preparing this certificate, the evidence and detailed procedures used in establishing the corner positions and monumentation found or placed.)

Monument Description and Remarks: ① Found 1/2" rebar. Stone set by Hiatt not found. ② Found 1/2" reb. w/cap 13427 used on prior surveys. Dist's agree reasonably well w/ G.L.O. survey of section.

PLAN-VIEW

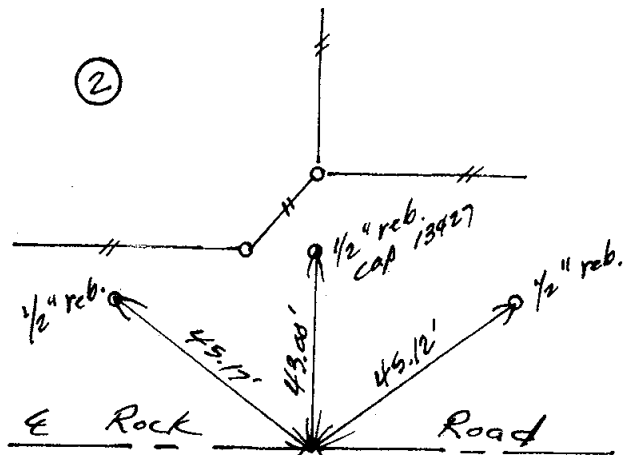
(Show a minimum of three reference ties to durable physical objects, relevant monuments and physical conditions that will enable recovery of the corner.)

①



0-Mon't found

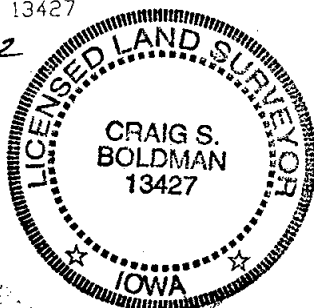
②



I hereby certify that the survey work was completed and this certificate was prepared by me or under my direct personal supervision and that I am a duly Licensed Land Surveyor under the laws of the State of Iowa

Signature: Craig S. Boldman
Craig S. Boldman

Date: 3-25-02 Reg. No. 13427
Expires 12-31-02



SEAL

List Corners to be indexed

Corners	Section	Twp	Range
N ¹ / ₄	5	74	26
E ¹ / ₄	"	"	"