

REC \$ No
AUD \$ Fee
R.M.F. \$

COMPUTER
RECORDED
COMPARED

MICKI UTSLER

Prepared By: Michael James Hackett, Madison County Engineer's Office, Courthouse, P.O. Box 152, Winterset, Ia. 50273, RECORDER #62-1136
MADISON COUNTY, IOWA

UNITED STATES PUBLIC LAND SURVEY CORNER CERTIFICATE OF

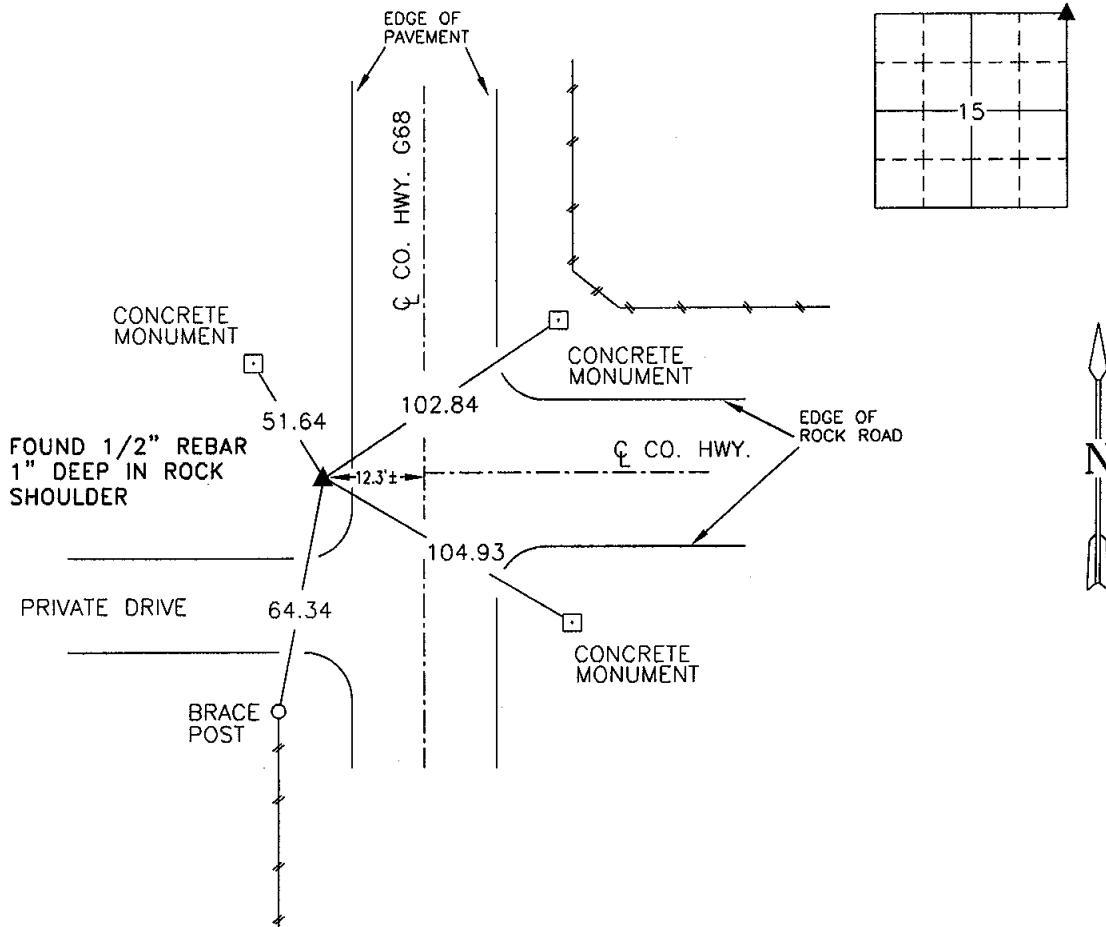
Land Survey Monuments situated in Section 15, Township 74 N, Range 26 W, of the Fifth Principal Meridian, Madison County, Iowa.
Previously recorded in N/A. in County Recorder's Office.
(book, page, document number, etc.)

(Show reason for preparing this certificate, the evidence and detailed procedures used in establishing the corner positions and monumentation found or placed.)

Monument Description and Remarks: Found 1/2" iron pin, 1" deep in rock shoulder. Traversed between sections 15/14, distances between recorded and established section corners to south, check with reasonable distance. Checked reasonably close to I.D.O.T. station offsets from right of way strip maps and plans on file at the Madison Engineer's Office. Accepted position.

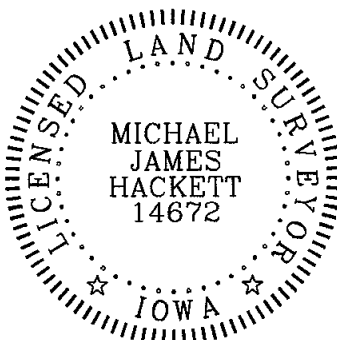
PLAN VIEW

(Show a minimum of three reference ties to durable physical objects, relevant monuments and physical conditions that will enable recovery of the corner.)



NE. COR., NE. 1/4, SEC. 15

NOTE: ALL TIES TO "X" NAILS UNLESS NOTED



I hereby certify that this land surveying document was prepared and the related survey work was performed by me or under my direct personal supervision and that I am a duly Licensed Land Surveyor under the laws of the State of Iowa.

Signed Michael James Hackett Date 3-21-02

Michael James Hackett Iowa Lic. No. 14672

My license renewal date is 12/31/2002.

Pages covered by this seal: 1.