

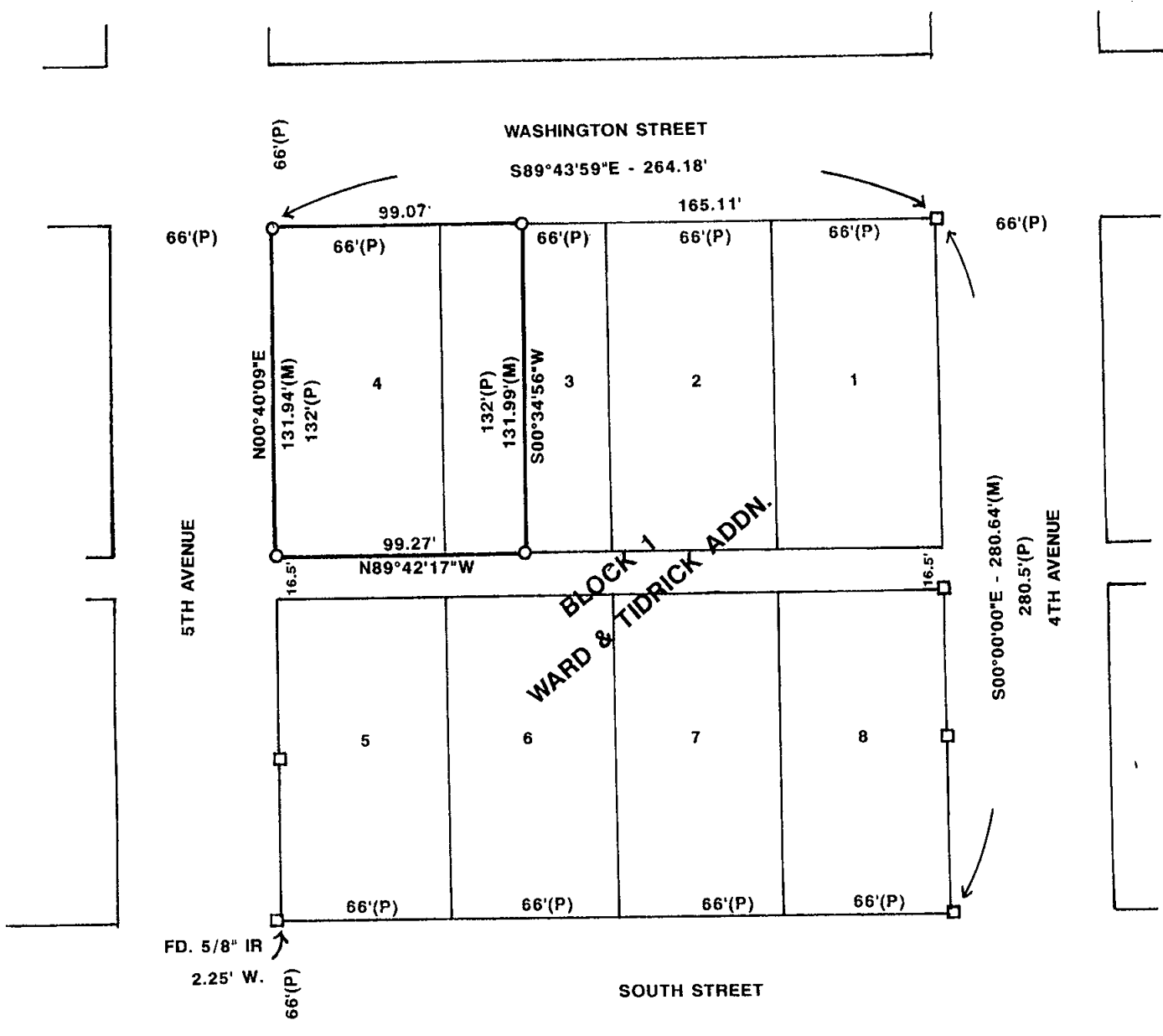
REC \$ 5<sup>00</sup>  
AUD \$ \_\_\_\_\_  
R.M.F. \$ 1<sup>00</sup>

COMPUTER   
RECORDED   
COMPAID \_\_\_\_\_

MICKI UTSLER  
RECORDER  
MADISON COUNTY, IOWA

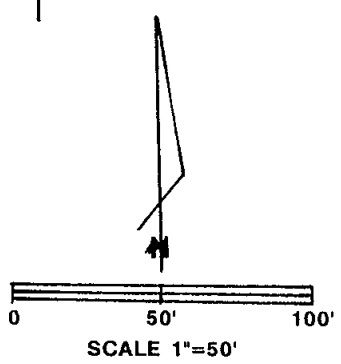
VANCE & HOCHSTETLER, P.C. CONSULTING ENGINEERS, WINTERSSET, IOWA (515) 462-3995  
CHARLES T. VANCE, 110 WEST GREEN ST., WINTERSSET, IOWA 50273  
JAMES M HOCHSTETLER, 110 WEST GREEN ST., WINTERSSET, IOWA 50273

PLAT OF SURVEY OF LOT 4 AND THE WEST HALF OF LOT 3 ON BLOCK 1, OF  
WARD & TIDRICK'S ADDITION TO WINTERSSET, MADISON COUNTY, IOWA.  
OWNED BY ANTHONY G. AND TERESA K. GOLIGHTLY.

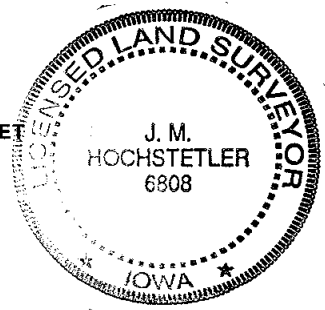


LEGAL DESCRIPTION: BLOCK 1

Lot 4 and the West Half of Lot 3, Ward and Tidrick's Addition to Winterset, Madison County, Iowa.



- DATE OF SURVEY - 3/18/02
- CAPPED IRON ROD (CIR) #6808 SET
- 5/8" IRON ROD FOUND
- (M) MEASURED DISTANCE
- (P) PLATTED DISTANCE



I hereby certify that this land surveying document was prepared and the related survey work was performed by me or under my direct personal supervision and that I am a duly licensed Land Surveyor under the laws of the State of Iowa.

*J.M. Hochstetler*  
J.M. HOCHSTETLER  
License number 6808 Date 3/20/02  
My license renewal date is December 31, 2003  
Pages or sheets covered by this seal: 1