

REC \$ 5⁰⁰
 AUD \$ 1⁰⁰
 R.M.F. \$ 1⁰⁰

COMPUTER
 RECORDED
 COMPARED _____

MICKI UTSLER
 REC'D (515) 276-0467
 MADISON COUNTY, IOWA

PREPARED BY: JOEL R. ROMNEY 3501 104th STREET URBANDALE IOWA 50322

UNITED STATES PUBLIC LAND SURVEY CORNER CERTIFICATE
 OF

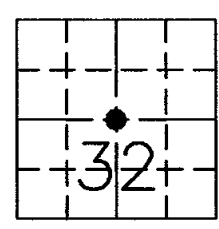
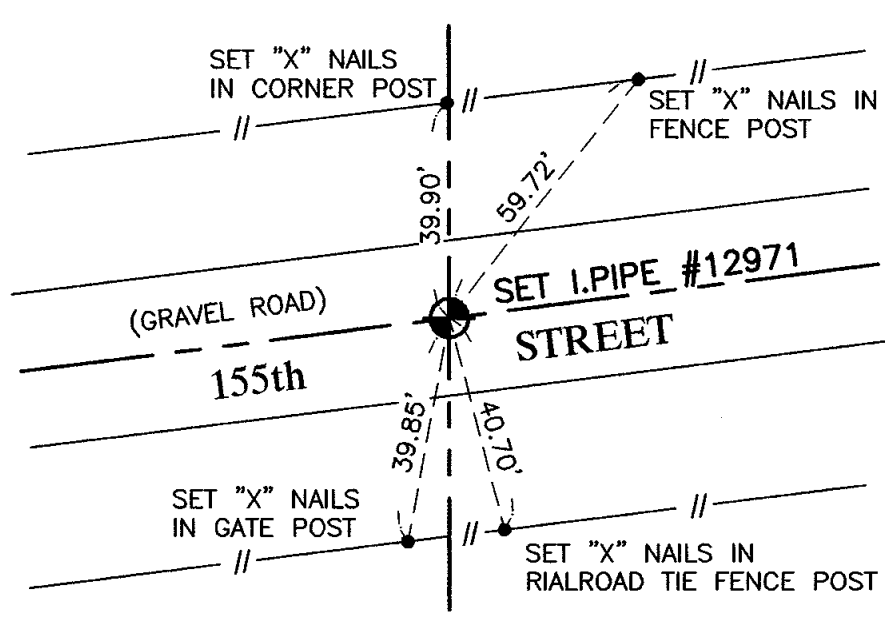
Land Survey Monuments situated in Section 32, Township 77 N, Range 26 W, of the Fifth Principal Meridian, MADISON County, Iowa. Previously recorded in Book NONE, Page NONE.

(Show reason for preparing this certificate, the evidence and detailed procedures used in establishing the corner positions and monumentation found or placed).

Monument Description and Remarks:

NO EXISTING CORNER CERTIFICATE IS ON FILE AT THE MADISON COUNTY RECORDER'S OFFICE. ADDITIONAL INFORMATION CAN BE FOUND ON BISHOP ENGINEERING DRAWING No. 01-18P.

PLAN-VIEW



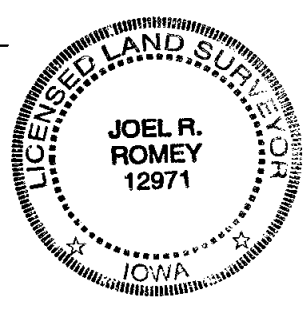
CENTER SECTION CORNER

I hereby certify that the survey work was completed and this certificate was prepared by me or under my direct personal supervision and that I am a duly licensed land surveyor under the laws of the state of Iowa.

Joel R. Romney 02/04/02

Licensed Land Surveyor No. 12971
 License Renewal Date: 31 Dec. 2003

SEAL



List Corners to be indexed

Corners	Section	Twp	Range
CENTER	32	77	26