

REC \$ No  
AUD \$ Fee  
R.M.F. \$     

COMPUTER   
RECORDED   
COMPARED

MICKI UTSLER  
RECORDER  
MADISON COUNTY, IOWA

Prepared By:  Michael James Hackett, Madison County Engineer's Office, Courthouse, P.O. Box 152, Winterset, Ia. 50273, Tel. (515) 462-1136

# UNITED STATES PUBLIC LAND SURVEY CORNER CERTIFICATE OF

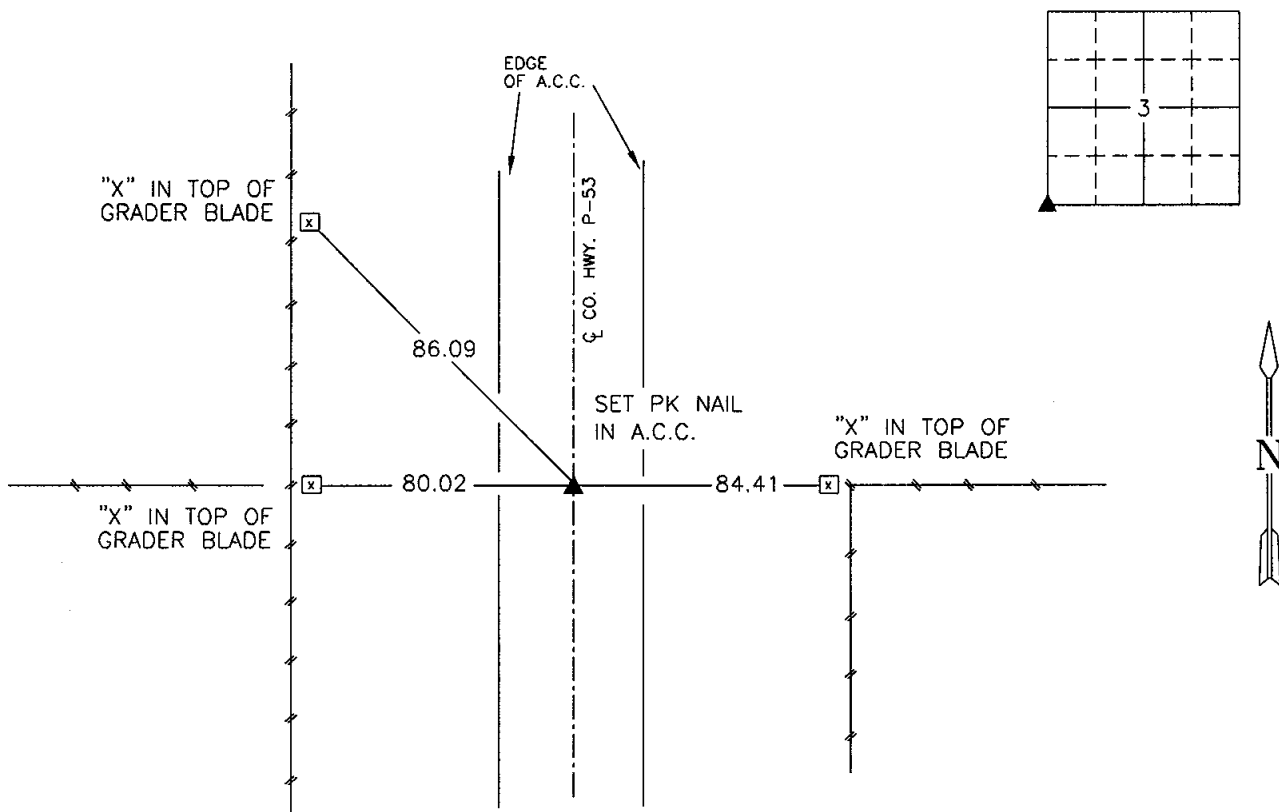
Land Survey Monuments situated in Section 3, Township 75 N, Range 29 W, of the Fifth Principal Meridian, Madison County, Iowa.  
Previously recorded in Book 1, Page 447 in County Recorder's Office.  
(book, page, document number, etc.)

(Show reason for preparing this certificate, the evidence and detailed procedures used in establishing the corner positions and monumentation found or placed.)

Monument Description and Remarks: Found 3/8" iron pin. Reset with P.K. nail in asphalt concrete pavement. The found 3/8" iron pin was disturbed during the construction of Madison County Highway Project STP-S-C061(60)--5E-61. The P.K. nail was reset from ties.

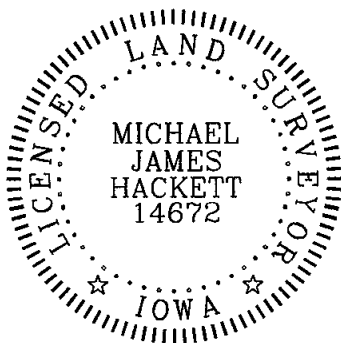
## PLAN VIEW

(Show a minimum of three reference ties to durable physical objects, relevant monuments and physical conditions that will enable recovery of the corner.)



SW COR., SEC. 3

NOTE: ALL TIES TO "X" NAILS UNLESS NOTED



I hereby certify that this land surveying document was prepared and the related survey work was performed by me or under my direct personal supervision and that I am a duly Licensed Land Surveyor under the laws of the State of Iowa.

Signed Michael James Hackett Date 1-21-2002

Michael James Hackett Iowa Lic. No. 14672

My license renewal date is 12/31/2002.

Pages covered by this seal: 1.

STP-S-C061(60)--5E-61-4  
E-13