

FILED NO. 000859  
 BOOK 2002 PAGE 859  
 2002 FEB 20 PM 3:19

REC \$ 5.00  
 AUD \$ \_\_\_\_\_  
 R.M.F. \$ 1.00

COMPUTER   
 RECORDED   
 COMPARED \_\_\_\_\_

MICKI UTSLER  
 RECORDER  
 MADISON COUNTY, IOWA

RETURN TO: ✓ BOLDMAN LAND SURVEYING, P.C., BOX 66, WINTERSET, IA 50273 515-462-9242

UNITED STATES PUBLIC LAND SURVEY CORNER CERTIFICATE

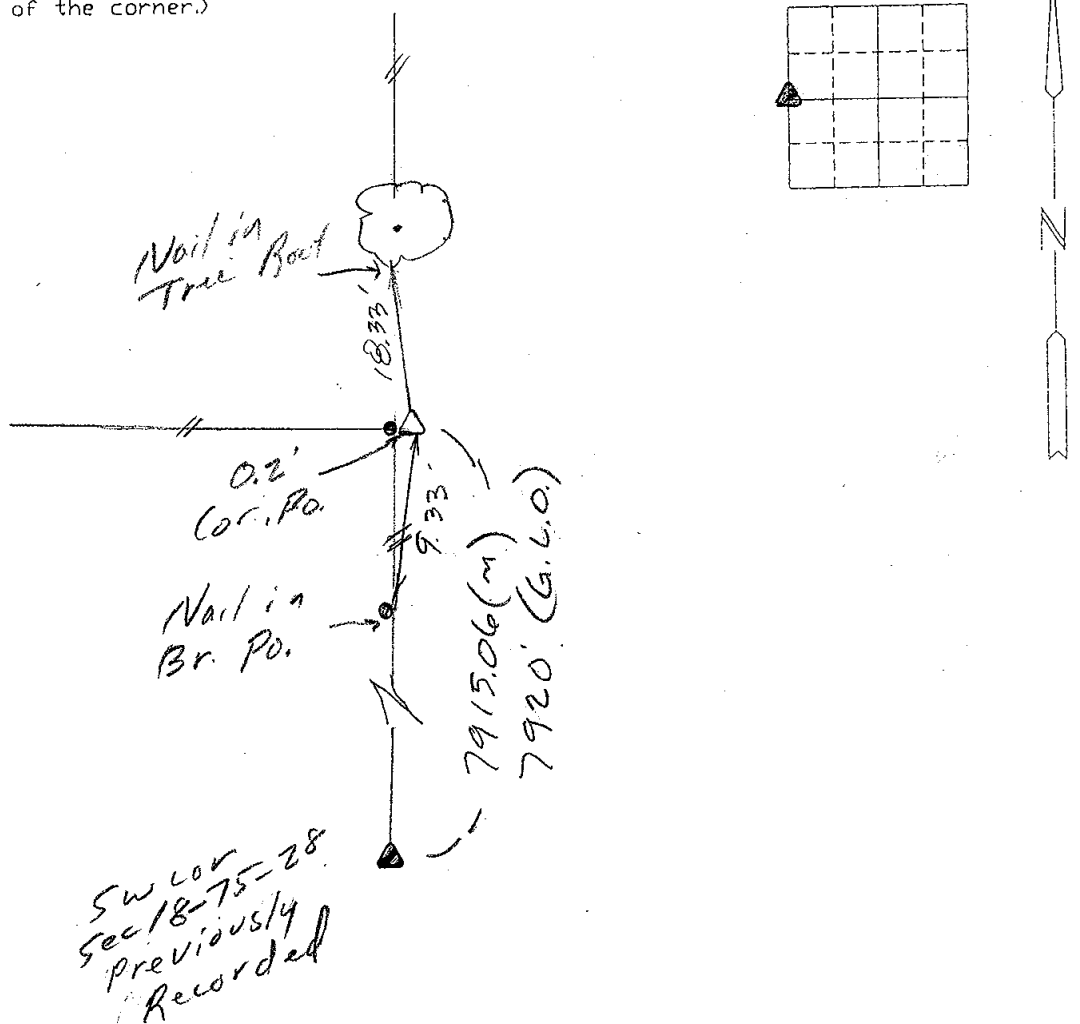
OF \_\_\_\_\_  
 Land Survey Monuments situated in Section 7, Township 75N, Range \_\_\_\_\_  
28W, of the Fifth Principal Meridian, Madison County, Iowa  
 Previously recorded in None in County Recorder's Office.  
 (book, page, document number, etc.)

(show reason for preparing this certificate, the evidence and detailed procedures used in establishing the corner positions and monumentation found or placed.)

Monument Description and Remarks: Set #4 rebar w/ orange cap "LS 13427" at fence cor. post. No stone found according to bluff notes.

PLAN-VIEW

(Show a minimum of three reference ties to durable physical objects, relevant monuments and physical conditions that will enable recovery of the corner.)



I hereby certify that the survey work was completed and this certificate was prepared by me or under my direct personal supervision and that I am a duly Licensed Land Surveyor under the laws of the State of Iowa

Signature: Craig S. Boldman  
 Craig S. Boldman

Date: 2/18/02 Reg. No. 13427

List Corners to be Indexed

Corners	Section	Twp	Range
W/4	7	75	28

SEAL

