

REC \$ 100
AUD \$ FEE
R.M.F. \$

COMPUTER
RECORDED
COMPARED

Prepared By: Michael James Hockett, Madison County Engineer's Office, Courthouse, P.O. Box 152, Winterset, Ia. 50273, Telephone 562-1136

MICKLUTSLER
REGISTERED
MADISON COUNTY, IOWA

UNITED STATES PUBLIC LAND SURVEY CORNER CERTIFICATE OF

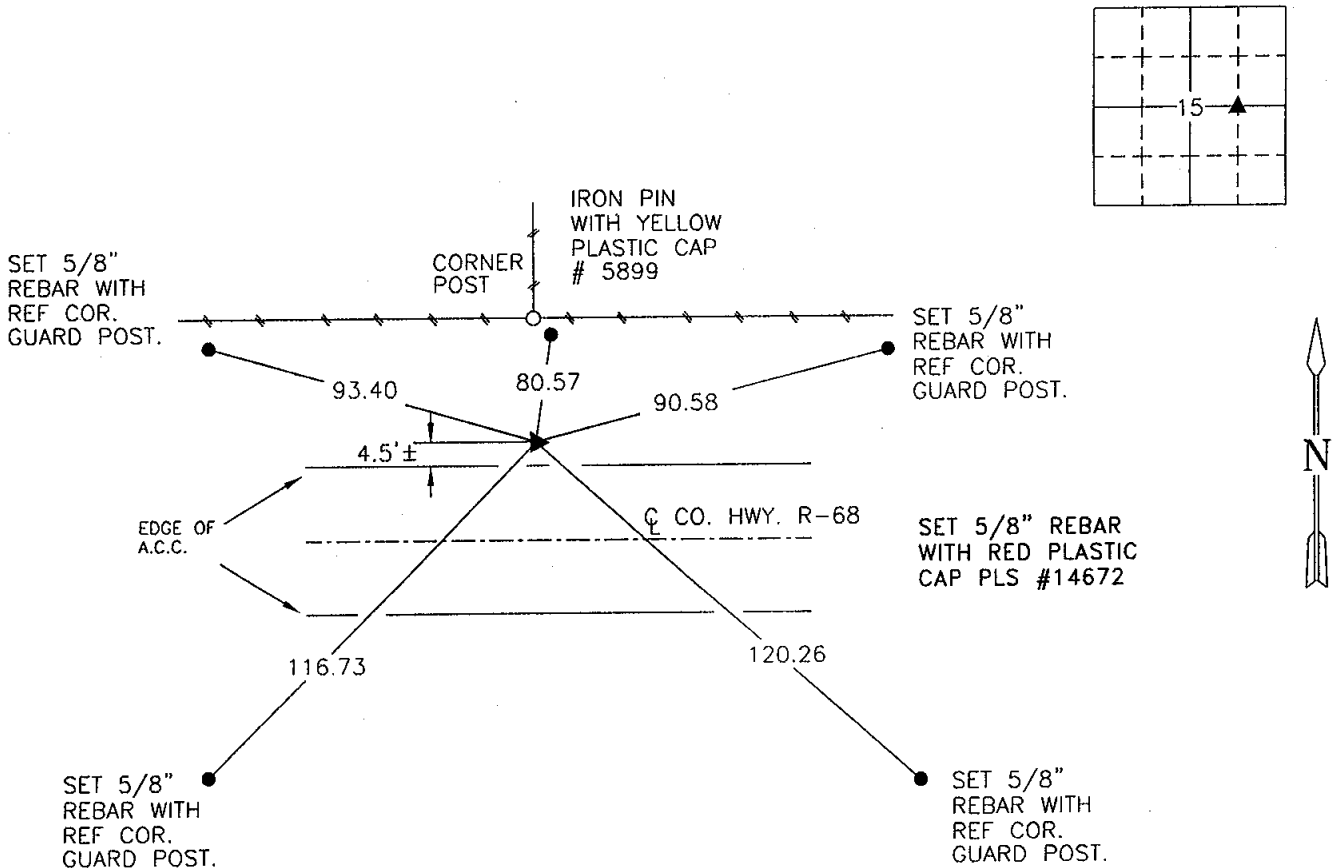
Land Survey Monuments situated in Section 15, Township 74 N, Range 26 W, of the Fifth Principal Meridian, Madison County, Iowa.
Previously recorded in Book 2, Page 88 in County Recorder's Office.
(book, page, document number, etc.)

(Show reason for preparing this certificate, the evidence and detailed procedures used in establishing the corner positions and monumentation found or placed.)

Monument Description and Remarks: Found nail in A.C.C. pavement. Reset with 5/8" rebar with red plastic cap, PLS # 14672. The found nail in A.C.C. pavement was disturbed during the reconstruction of the highway associated with Madison County Project FM-TSF-C061(55)--5B-61. The 5/8" rebar with red plastic cap, PLS # 14672, was reset from ties, highway control monuments, and found section corners tied to the control of the project.

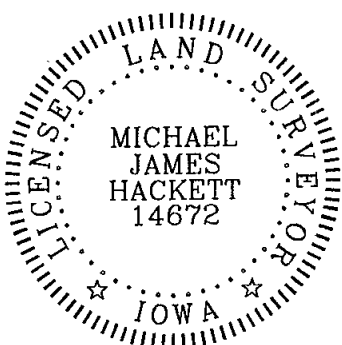
PLAN VIEW

(Show a minimum of three reference ties to durable physical objects, relevant monuments and physical conditions that will enable recovery of the corner.)



SW. COR., SE. 1/4, NE. 1/4, SEC. 15

NOTE: ALL TIES TO "X" NAILS UNLESS NOTED



I hereby certify that this land surveying document was prepared and the related survey work was performed by me or under my direct personal supervision and that I am a duly Licensed Land Surveyor under the laws of the State of Iowa.

Signed Michael James Hackett Date 10-26-01
Michael James Hackett Iowa Lic. No. 14672

My license renewal date is 12/31/2002.
Pages covered by this seal: 1.

FM-TSF-C061(55)--5B-61-2