

REC \$ 5.00
AUD \$
R.M.F. \$ 1.00

FILED NO. 002854
BOOK 2001 PAGE 2854

COMPUTER 01 JUL -9 PM 3:54
RECORDED
MICKI UTSLER
RECORDER
MADISON COUNTY, IOWA

VANCE & HOCHSTETLER, P.C., CONSULTING ENGINEERS, WINTERSSET, IOWA (515) 462-3995
CHARLES T. VANCE, 110 West Green St., Winterset, Iowa, 50273
JAMES M HOCHSTETLER, 110 West Green St., Winterset, Iowa 50273

UNITED STATES PUBLIC LAND SURVEY CORNER CERTIFICATE

Land Survey Monuments situated in Section 18 OF 18 Township 74 North Range 27 West of the Fifth Principal Meridian, MADISON County, Iowa.
Previously recorded in _____ in County Recorder's Office.
(book, page, document number, etc.)

(Show reason for preparing this certificate, the evidence and detailed procedures used in establishing the corner positions and monumentation found or placed.)

Monument Description and Remarks:

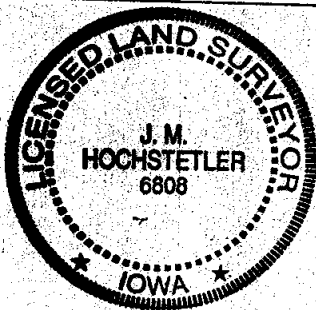
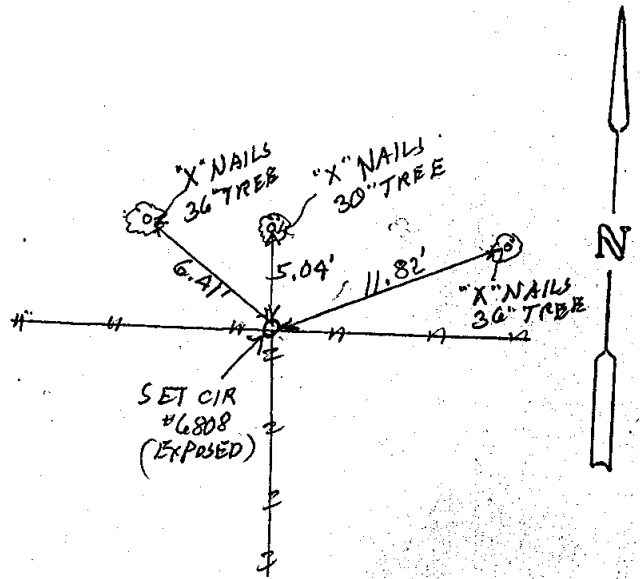
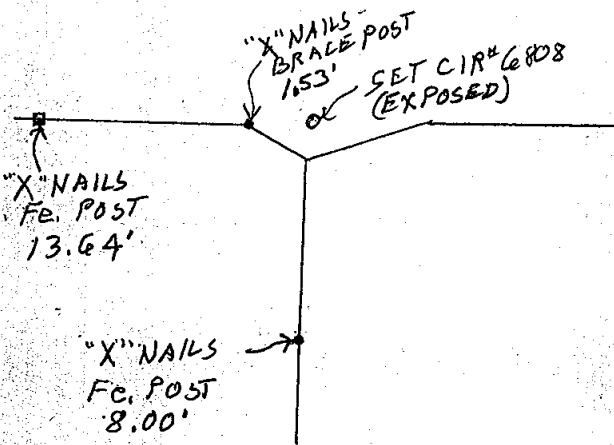
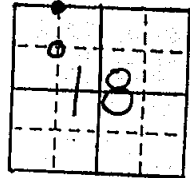
NE cor NW Fr. 1/4 NW. 1/4 - Set Capped Iron Rod #6808 (1/2" rebar, exposed)
at projected intersection of East & West fence from N.W. Cor of
Section to N 1/4 Cor and fence to the South.
SE cor. NW Fr. 1/4 NW. 1/4 - Set C.I.R. #6808 (1/2" rebar, exposed) at existing
fence corner of East and West fence and property line fence to the South,

PLAN - VIEW

(Show a minimum of three reference ties to durable physical objects, relevant monuments and physical conditions that will enable recovery of the corner.)

NE CORNER
NW Fr. 1/4 NW. 1/4
SEC. 18-74-27
Set C.I.R. #6808

SE CORNER
NW Fr. 1/4 NW. 1/4
SEC. 18-74-27
Set C.I.R. #6808



I hereby certify that this land surveying document was prepared and the related survey work was performed by me or under my direct personal supervision and that I am a duly licensed Land Surveyor under the laws of the State of Iowa.

J. M. Hochstetler
J. M. HOCHSTETLER

License number 6808 Date 7/2/01
My license renewal date is December 31, 2001
Pages or sheets covered by this work: 1

List Corners to be Indexed

Corners	Section	Twp	Range
NE cor	18	74N	27W
NW Fr. 1/4 NW. 1/4			
SE cor	18	74N	27W
NW Fr. 1/4 NW. 1/4			