

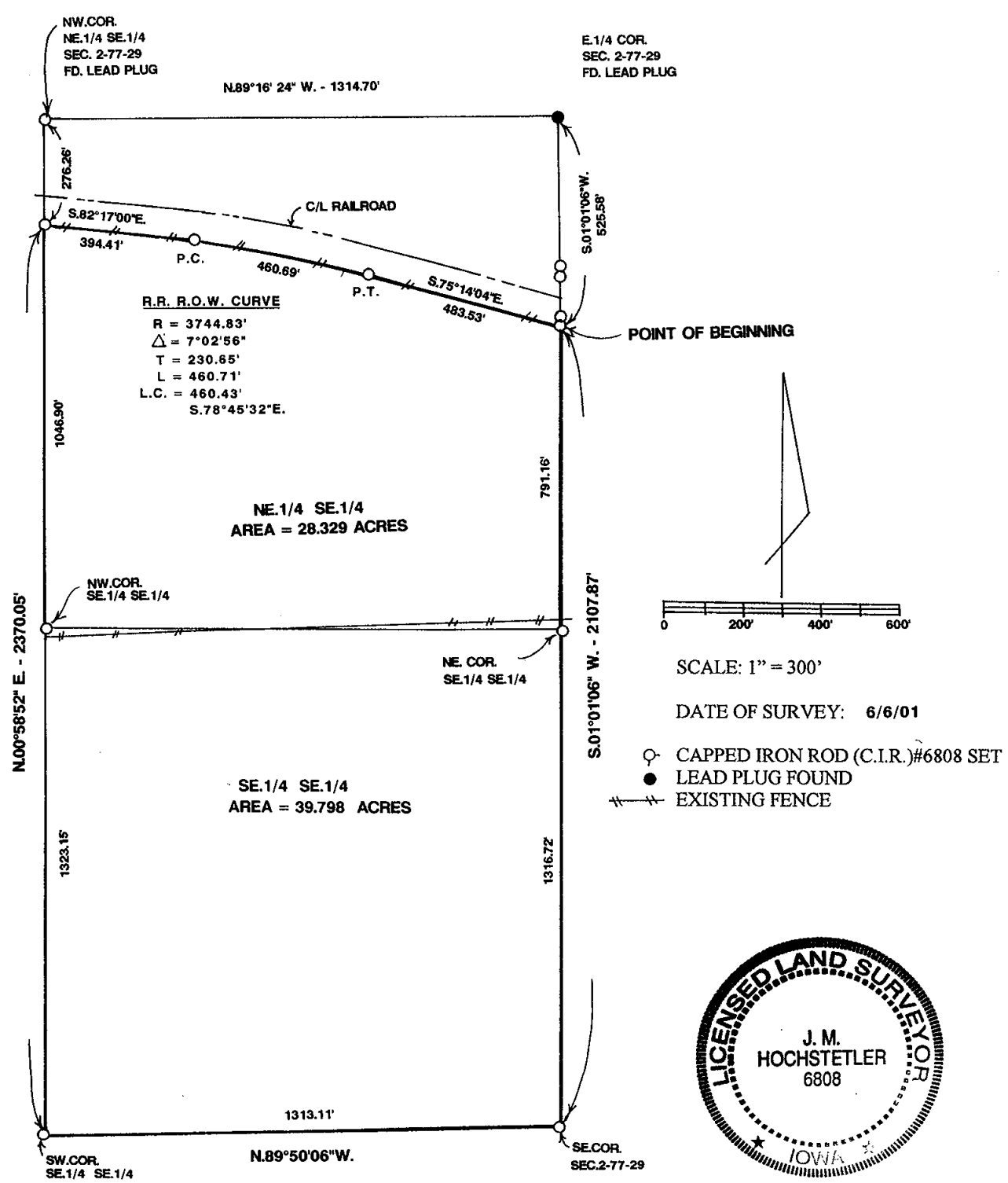
REC \$ 5<sup>00</sup>  
AUD \$       
R.M.F. \$ 1<sup>00</sup>

COMPUTER ✓  
RECORDED ✓  
COMPARED     

NICKI UTSLER  
RECORDER  
MADISON COUNTY, IOWA

**VANCE & HOCHSTETLER, P.C. CONSULTING ENGINEERS, WINTERSET, IOWA (515) 462-3995**  
**CHARLES T. VANCE, 110 WEST GREEN ST., WINTERSET, IOWA 50273**  
**JAMES M HOCHSTETLER, 110 WEST GREEN ST., WINTERSET, IOWA 50273**

PROPERTY LINE RETRACEMENT SURVEY OF THE SOUTHEAST QUARTER OF THE SOUTHEAST QUARTER AND THAT PART OF THE NORTHEAST QUARTER OF THE SOUTHEAST QUARTER SOUTH OF THE RAILROAD RIGHT-OF-WAY ALL IN SECTION 2, TOWNSHIP 77 NORTH, RANGE 29 WEST OF THE 5<sup>TH</sup> P.M., MADISON COUNTY, IOWA OWNED BY JAN B. GODBY.



**LEGAL DESCRIPTION:**

The Southeast Quarter of the Southeast Quarter and that part of the Northeast Quarter of the Southeast Quarter lying South of the Railroad right-of-way all in Section 2, Township 77 North, Range 29 West of the 5<sup>th</sup> P.M., Madison County, Iowa containing 68.127 acres.

I hereby certify that this land surveying document was prepared and the related survey work was performed by me or under my direct personal supervision and that I am a duly licensed Land Surveyor under the laws of the State of Iowa.

*J.M. Hochstetler*  
J.M. HOCHSTETLER  
License number 6808 Date 6/8/01  
My license renewal date is December 31, 2001  
Pages or sheets covered by this seal: )