

REC \$ 5⁰⁰ COMPUTER ✓
AUD \$ RECORDED ✓
R.M.F. \$ 1 COMPARED ✓

MICKI UTSLER
RECORDER

RETURN TO : BOLDMAN LAND SURVEYING, P.C., BOX 66, WINTERSSET, IA 50273 515 482 9242

UNITED STATES PUBLIC LAND SURVEY CORNER CERTIFICATE

OF

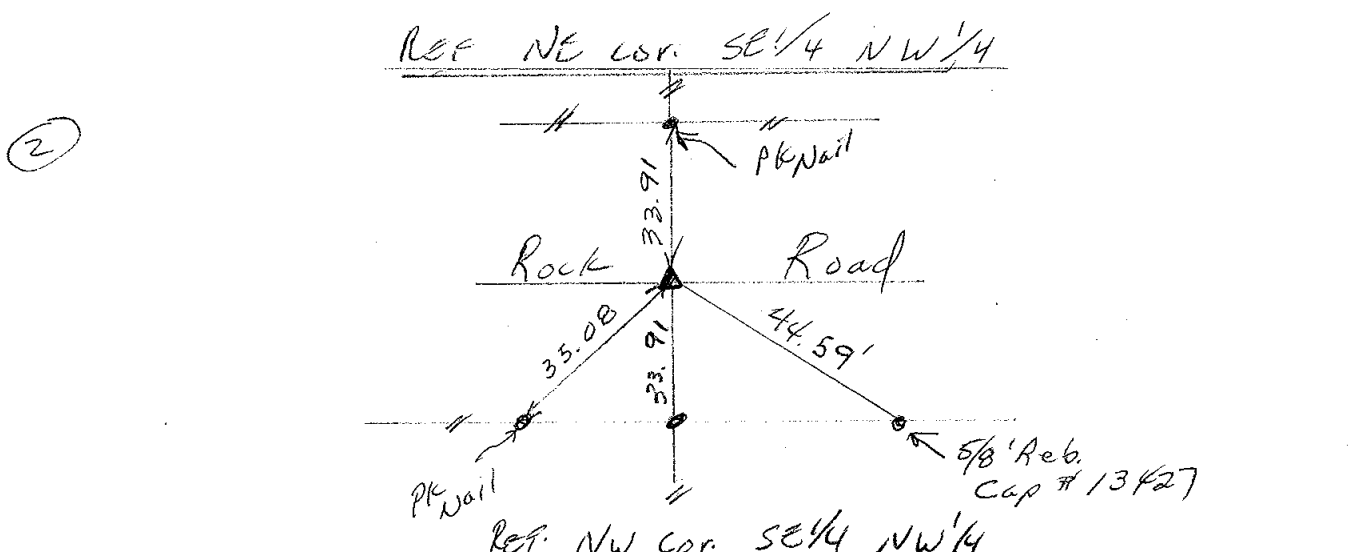
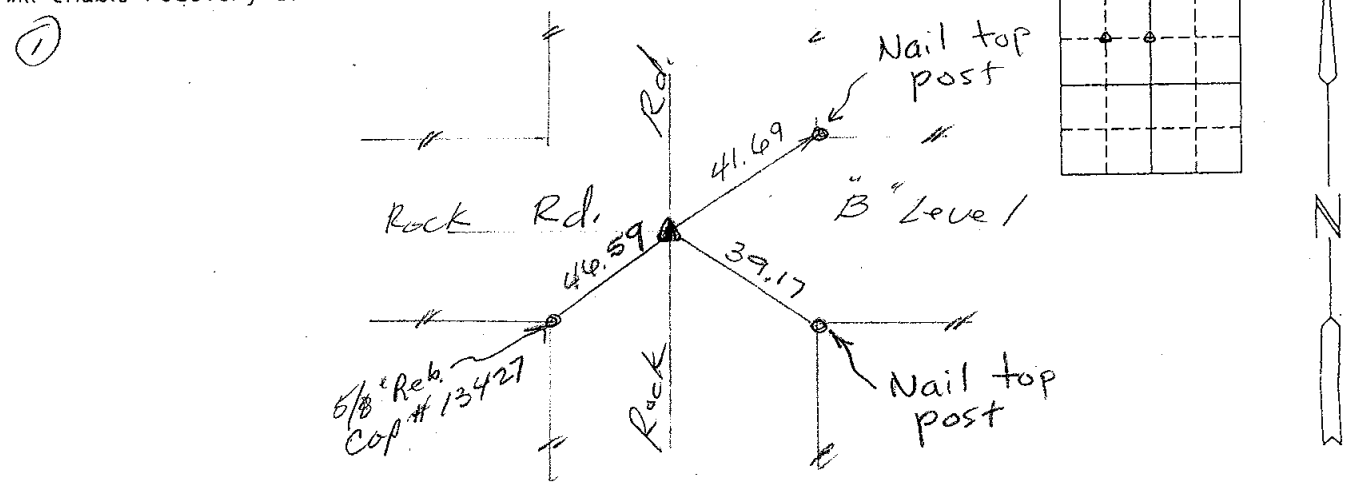
Land Survey Monuments situated in Section 22 Township 74N Range 28W, of the Fifth Principal Meridian, Madison County, Iowa
Previously recorded in None In County Recorder's Office.
(book, page, document number, etc.)

(show reason for preparing this certificate, the evidence and detailed procedures used in establishing the corner positions and monumentation found or placed.)

Monument Description and Remarks: ① Found 3/4" bolt (bent) replaced w 5/8" rebar w cap 13427 at intersection of roads. ② Set 5/8" rebar at split of R.O.W. fence N & S.

PLAN-VIEW

(Show a minimum of three reference ties to durable physical objects, relevant monuments and physical conditions that will enable recovery of the corner.)



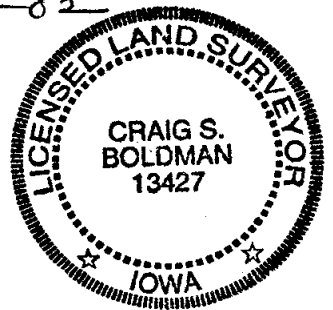
I hereby certify that the survey work was completed and this certificate was prepared by me or under my direct personal supervision and that I am a duly Licensed Land Surveyor under the laws of the State of Iowa

List Corners to be Indexed

Corners	Section	Twp	Range
NE & NW cor.	22	74N	28W
SE 1/4 NW 1/4			

Signature: Craig S. Boldman
Craig S. Boldman

Date: 7/23/01 Reg. No. 13427
Expire 12-31-02



SEAL