

FILED NO. **003166**

BOOK **2001** PAGE **3166**

01 JUL 20 AM 9:32

MICKI UTSLER
RECORDER
MADISON COUNTY, IOWA

REC \$ **5⁰⁰**
AUD \$ **1⁰⁰**
R.M.F. \$ **1⁰⁰**

COMPUTER
RECORDED
COMPARED _____

01-131S
VANCE & HOCHSTETLER, P.C., CONSULTING ENGINEERS, WINTERSSET, IOWA (515) 462-3995
CHARLES T. VANCE, 110 West Green St., Winterset, Iowa, 50273
JAMES M HOCHSTETLER, 110 West Green St., Winterset, Iowa 50273

UNITED STATES PUBLIC LAND SURVEY CORNER CERTIFICATE

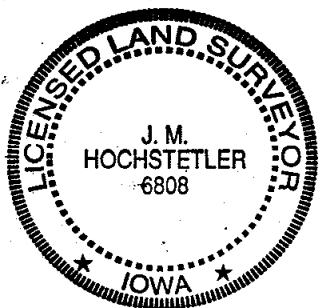
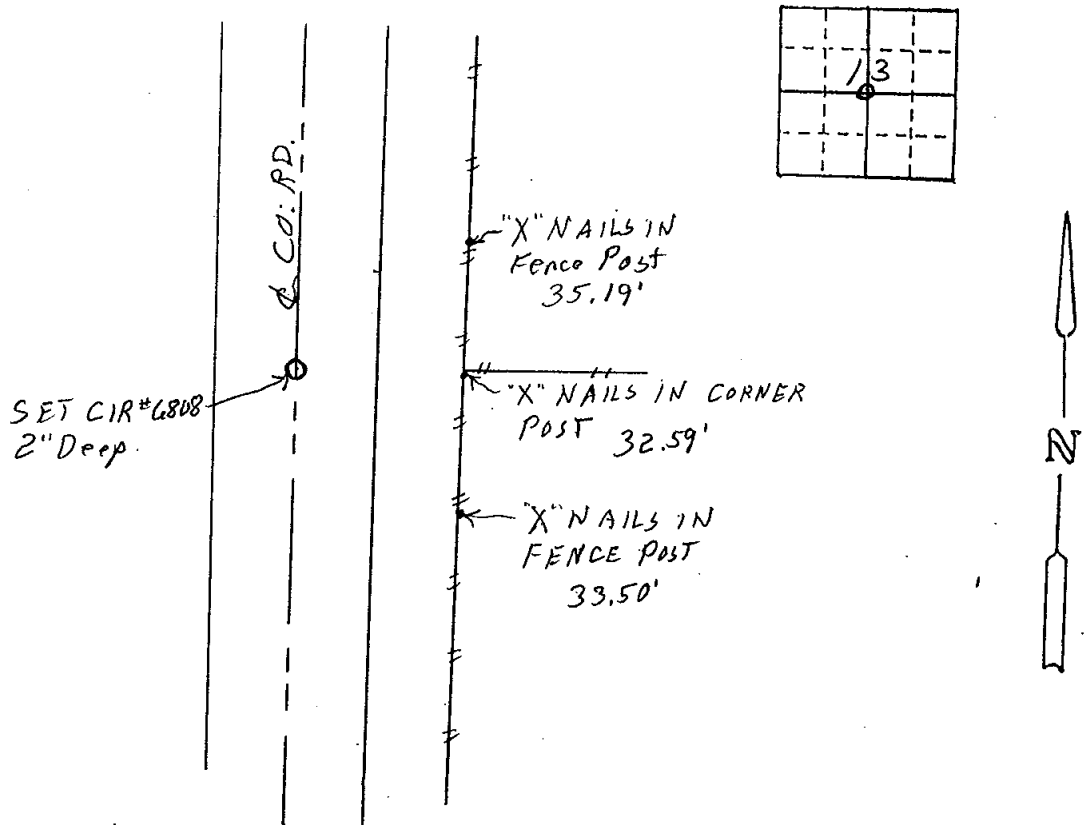
OF
Land Survey Monuments situated in Section 13, Township 74N, Range 29W, of the Fifth Principal Meridian, MADISON County, Iowa.
Previously recorded in _____ in County Recorder's Office.
(book, page, document number, etc.)

(Show reason for preparing this certificate, the evidence and detailed procedures used in establishing the the corner positions and monumentation found or placed.)

Monument Description and Remarks: Center - Set yellow CIR #6808 2" deep on line between found N 1/4 Corner and S 1/4 Corner of Section 13 in line with property line fence to the East.

PLAN - VIEW

(Show a minimum of three reference ties to durable physical objects, relevant monuments and physical conditions that will enable recovery of the corner.)



I hereby certify that this land surveying document was prepared and the related survey work was performed by me or under my direct personal supervision and that I am a duly licensed Land Surveyor under the laws of the State of Iowa.
J.M. Hochstetler
J.M. HOCHSTETLER
License number 6808 Date 7/14/01
My license renewal date is December 31 2001
Pages or sheets covered by this seal: 1

List Corners to be Indexed

Corners	Section	Twp	Range
CENTER	13	74N	29W