

FILED NO. 002034

REC \$ 5⁰⁰
AUD \$
R.M.F. \$ 1⁰⁰

COMPUTER
RECORDED
COMPARED _____

BOOK 2001 PAGE 2034

2001 MAY 21 AM 11:01

Return to: M.R. Hepping, Inc. P.O. BOX 143, Adel, IA 50003

MICKI UTSLER
RECORDER 0.519-00
MADISON COUNTY, IOWA

UNITED STATES PUBLIC LAND SURVEY CORNER CERTIFICATE OF

Land Survey Monuments situated in Section 7, Township 76 North, Range 29 West, of the Fifth Principal Meridian, Madison County, Iowa.

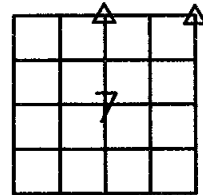
Previously recorded in _____ in County Recorder's Office.
(book, page, document number, ect.)

(Show reason for preparing this certificate, the evidence and detailed procedures used in establishing the corner positions and found or placed.)

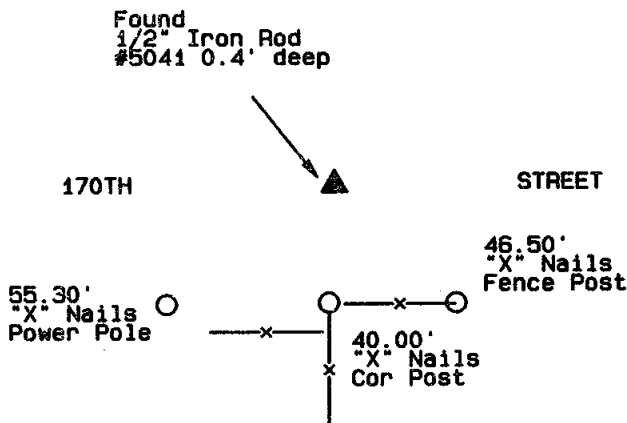
Monument Description and Remarks: Found monuments from Madison County Engineer records

PLAN - VIEW

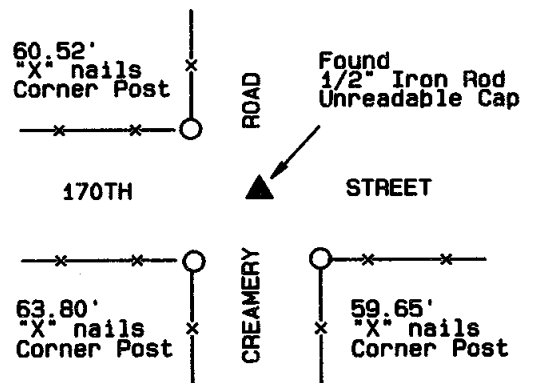
(Show a minimum of three reference ties to durable physical objects, relevant monuments and physical conditions that will enable recovery of the corner)



N1/4 COR. SEC 7-76-29



NE1/4 COR. SEC 7-76-29



I hereby certify that this land surveying document was prepared and the related survey work was performed by me or under my direct personal supervision and that I am a duly licensed Land Surveyor under the laws of the State of Iowa.

Signed

Date

Bruce D. Logemann

5/18/01

Bruce D. Logemann, L.S.

Iowa license No. 15219

My license renewal date is December 31, 2001

List Corners to be Indexed

Corners	Section	Twp.	Range
NE COR.	7	76	29
N1/4 COR.	7	76	29

