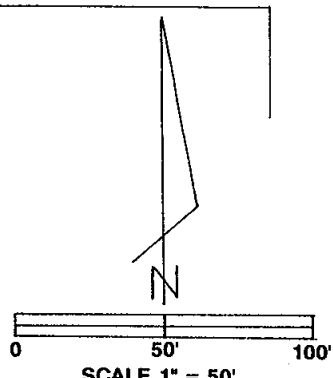
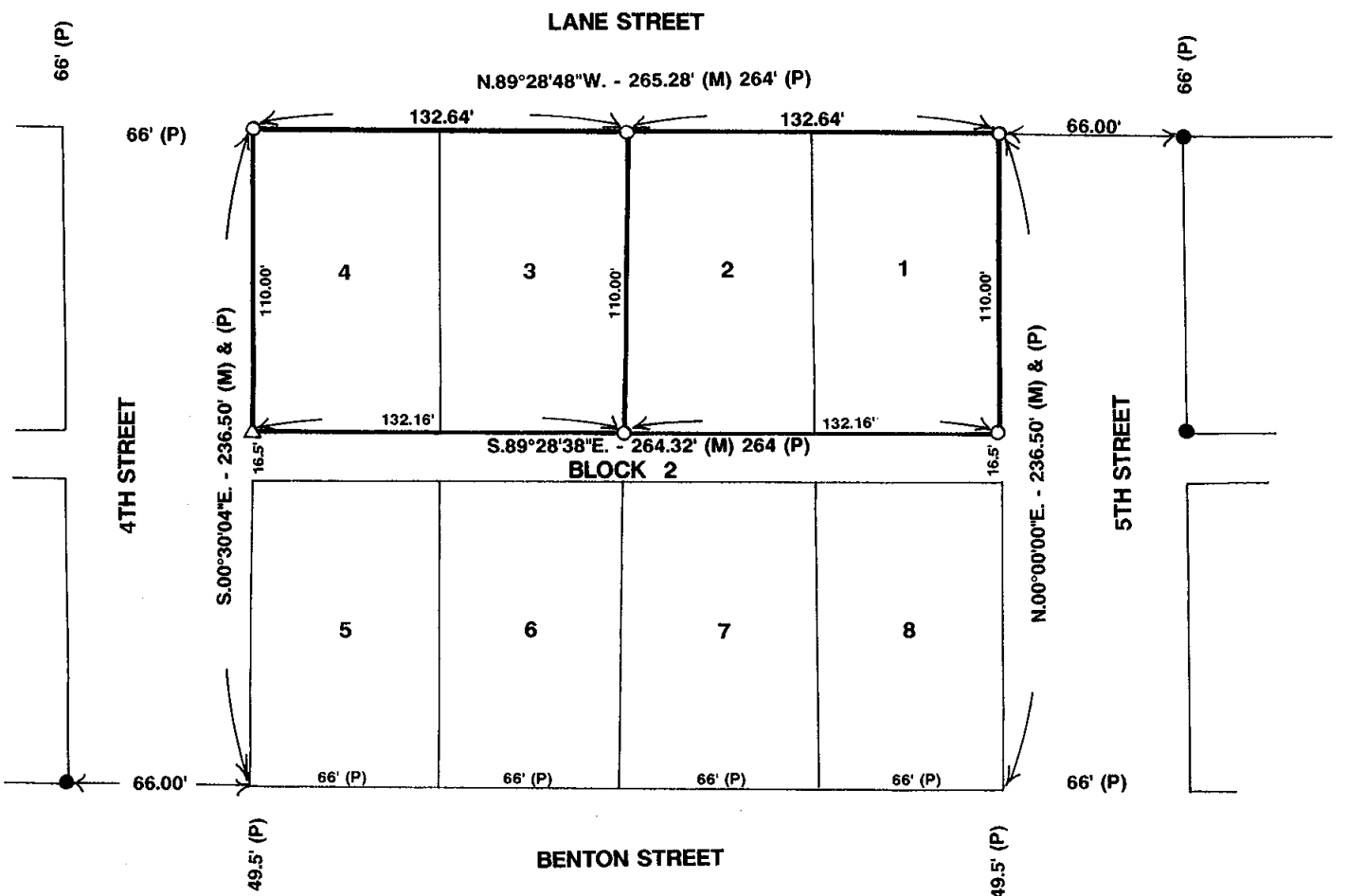


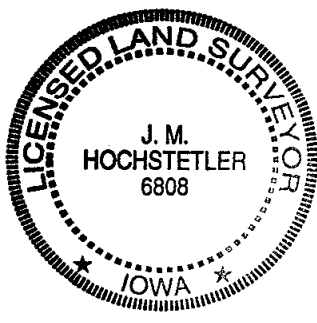
REC \$ 5.00 COMPUTER
AUD \$ _____ RECORDED
R.M.F. \$ 1.00 COMPARED _____

VANCE & HOCHSTETLER, P.C. CONSULTING ENGINEERS, WINTERSET, IOWA (515) 462-3995
CHARLES T. VANCE, 110 WEST GREEN ST., WINTERSET, IOWA 50273
JAMES M HOCHSTETLER, 110 WEST GREEN ST., WINTERSET, IOWA 50273

PLAT OF SURVEY OF LOTS 1, 2, 3 & 4, BLOCK 2, NORTH ADDITION, CITY OF WINTERSET, MADISON COUNTY, IOWA
OWNED BY BRONNA B. GORDON LIFE ESTATE.



- DATE OF SURVEY = 5/9/01
- CAPPED IRON ROD (CIR) #6808 SET
- △ NAIL SET IN TREE ROOT
- C.I.R. #5041 FOUND
- (M) MEASURED DISTANCE
- (P) PLATTED DISTANCE



I hereby certify that this land surveying document was prepared and the related survey work was performed by me or under my direct personal supervision and that I am a duly licensed Land Surveyor under the laws of the State of Iowa.

J.M. Hochstetler
 J.M. HOCHSTETLER
 License number 6808 Date 5/11/01
 My license renewal date is December 31, 2001
 Pages or sheets covered by this seal: 1