

2001 MAR 20 AM 11:34

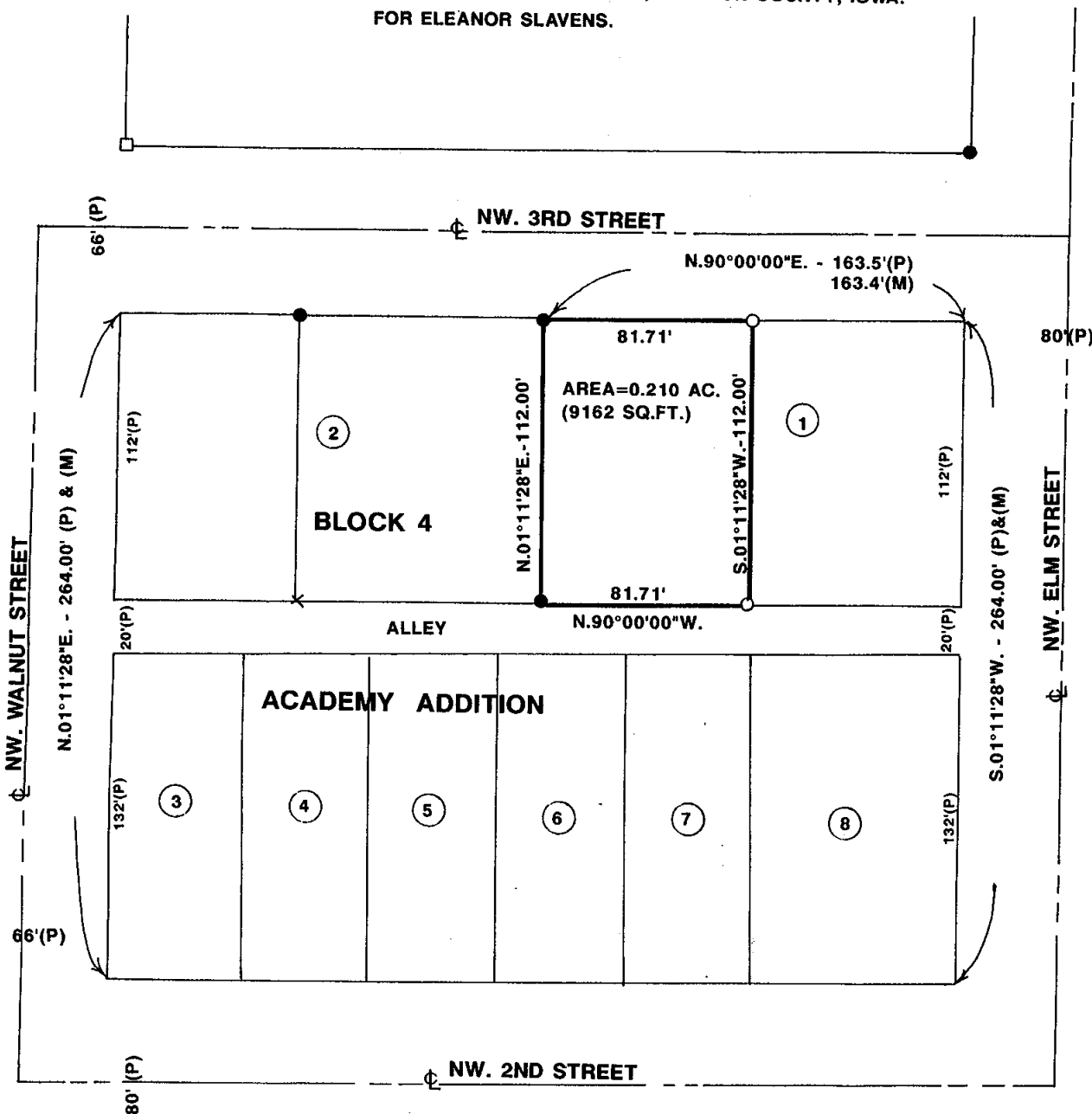
MICKI UTSLER  
RECORDER  
MADISON COUNTY, IOWA

REC \$ 5.00  
AUD \$ \_\_\_\_\_  
R.M.F. \$ 1.00

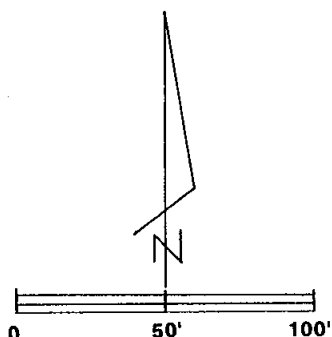
COMPUTER   
RECORDED   
COMPARED \_\_\_\_\_

VANCE & HOCHSTETLER, P.C. CONSULTING ENGINEERS, WINTERSET, IOWA (515) 462-3995  
CHARLES T. VANCE, 110 WEST GREEN ST., WINTERSET, IOWA 50273  
JAMES M HOCHSTETLER, 110 WEST GREEN ST., WINTERSET, IOWA 50273

PLAT OF SURVEY OF THE WEST HALF OF LOT 1, BLOCK 4  
OF ACADEMY ADDITION TO CITY OF EARLHAM, MADISON COUNTY, IOWA.  
FOR ELEANOR SLAVENS.



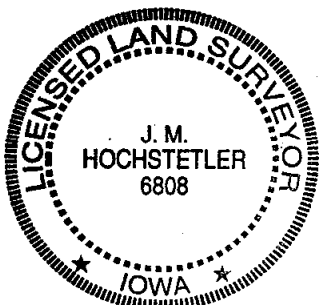
LEGAL DESCRIPTION:  
WEST HALF OF LOT 1, BLOCK 4 OF ACADEMY ADDITION  
TO THE CITY OF EARLHAM, MADISON COUNTY, IOWA.



SCALE: 1" = 50'

DATE OF SURVEY = 3-13-01

- CAPPED IRON ROD (C.I.R.)# 6808 SET
- C.I.R. # 5041 FOUND
- 1" IRON ROD FOUND
- (M) MEASURED DISTANCE
- (P) PLATTED DISTANCE



I hereby certify that this land surveying document was prepared and the related survey work was performed by me or under my direct personal supervision and that I am a duly licensed Land Surveyor under the laws of the State of Iowa.

*J.M. Hochstetler*  
J.M. HOCHSTETLER  
License number 6808 Date 3/19/01  
My license renewal date is December 31, 2001  
Pages or sheets covered by this seal: )