

MICHELLE "MICKI" UTSLER, COUNTY RECORDER
MADISON IOWA

Prepared by Mark L. Lee, LEE Engineers & Surveyors, 8003 Douglas Avenue, Urbandale, Iowa 50322 Phone: 515-252-7457

UNITED STATES PUBLIC LAND SURVEY CORNER CERTIFICATE OF

Land Survey Monuments situated in Section 26, Township 74 North, Range 27 West, of
the Fifth Principal Meridian, MADISON County, Iowa.

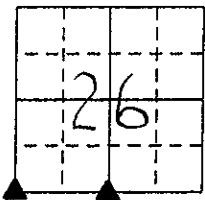
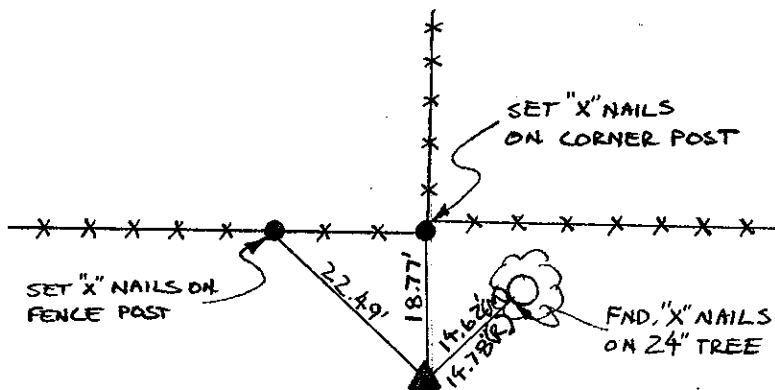
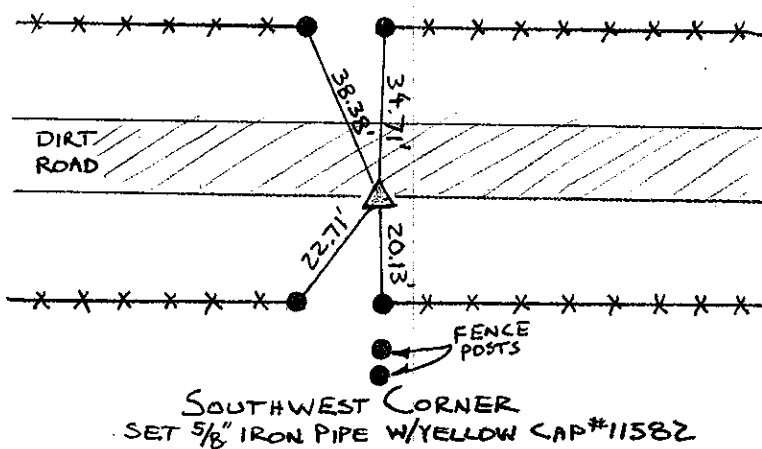
Previously recorded in NONE; BK-2 PG-56 in the County Recorder's Office.

Monument Description and Remarks: SOUTHWEST CORNER - SET 5/8" IRON PIPE WITH YELLOW CAP #11582
USING FENCES AND AERIAL PHOTOS.

SOUTH QUARTER CORNER - FOUND 1/2" IRON ROD MATCHING DESCRIPTION AND CLOSELY MATCHING
TIES AS RECORDED BOOK 2 PAGE 56

NOTE TIES ARE TO "X" NAILS
ON GATE POSTS

PLAN - VIEW



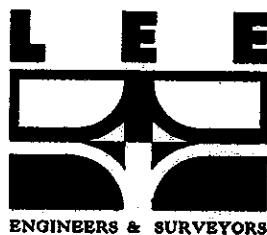
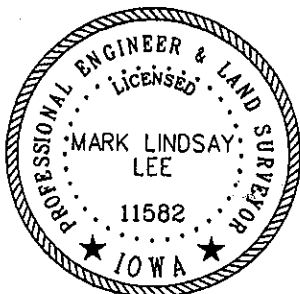
LEGEND

- ▲ FOUND SECTION CORNER MONUMENT
- FOUND MONUMENT
- I FOUND CHISELED "X" IN RIGHT-OF-WAY RAIL
- ⊗ FND "X" NAILS IN FENCE POST
- △ SECTION CORNER SET 5/8" I.P. W/YELLOW CAP #11582 (UNLESS NOTED)
- SET 1/2" I.R.
- × SET "X" NAILS IN FENCE POST
- I.P. IRON PIPE
- I.R. IRON ROD (REROD)
- (M) MEASURED DIMENSION
- (R) RECORDED DIMENSION
- SECTION LINE
- - - CENTERLINE
- × - × FENCE LINE
- ☼ SET "X" NAILS IN DECIDUOUS TREE

I hereby certify that this land surveying document was prepared and the related survey work was performed by me or under my direct personal supervision and that I am a duly licensed Land Surveyor under the laws of the State of Iowa.

Signature: Mark L. Lee
Mark L. Lee

Date: 1-12-05 Reg. No. 11582
My license renewal date is Dec. 31, 2006.



Corners	Corners to be Indexed		
	Section	Twp.	Range
S.W. CORNER	26	74	27
SOUTH 1/4 CORNER	26	74	27