

MICHELLE "MICKI" UTSLER, COUNTY RECORDER
MADISON IOWA

Prepared by Mark L. Lee, LEE Engineers & Surveyors, 3031 NW 86th Street, Urbandale, Iowa 50322 Phone: 515-252-7457

UNITED STATES PUBLIC LAND SURVEY CORNER CERTIFICATE OF

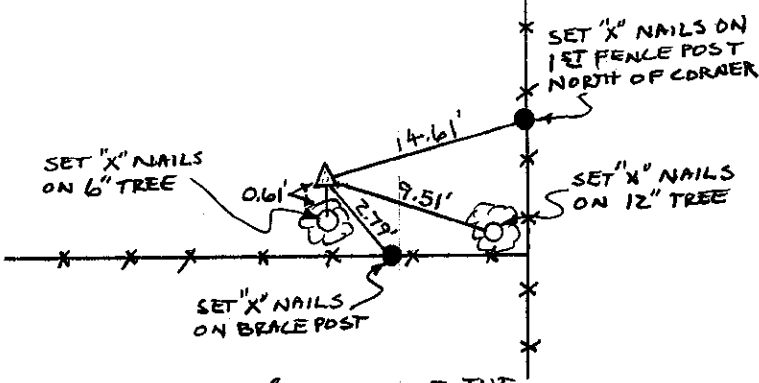
Land Survey Monuments situated in Section 27, Township 74 North, Range 27 West, of the Fifth Principal Meridian, MADISON County, Iowa.

Previously recorded in NONE in the County Recorder's Office.

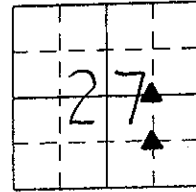
Monument Description and Remarks: NORTHEAST CORNER OF THE N.W. 1/4, S.E. 1/4 SET 5/8" IRON PIPE WITH YELLOW CAP #11582 IN LINE AND EQUAL DISTANCE TO THE CENTER AND EAST 1/4 CORNERS.

NORTHWEST CORNER OF THE S.E. 1/4, S.E. 1/4 SET 5/8" IRON PIPE WITH YELLOW CAP #11582 AT CORNER POST.

PLAN - VIEW

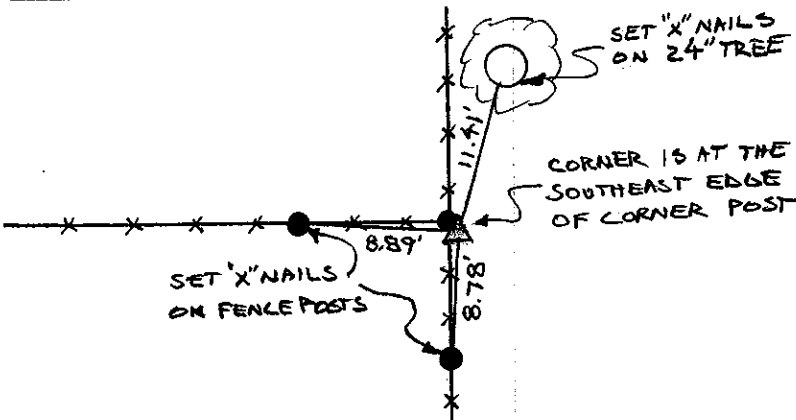


NORTHEAST CORNER OF THE
N.W. 1/4, S.E. 1/4
SET 5/8" IRON PIPE W/YELLOW CAP # 11582



LEGEND

- ▲ FOUND SECTION CORNER MONUMENT
- FOUND MONUMENT
- I FOUND CHISELED "X" IN RIGHT-OF-WAY RAIL
- ⊗ FND "X" NAILS IN FENCE POST
- △ SECTION CORNER SET 5/8" I.P. W/YELLOW CAP #11582 (UNLESS NOTED)
- SET 1/2" I.R.
- × SET "X" NAILS IN FENCE POST
- I.P. IRON PIPE
- I.R. IRON ROD (REROD)
- (M) MEASURED DIMENSION
- (R) RECORDED DIMENSION
- SECTION LINE
- - - CENTERLINE
- × - × FENCE LINE
- ⊙ SET "X" NAILS IN DECIDUOUS TREE

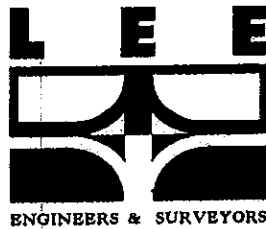
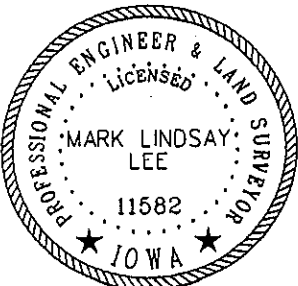


NORTHWEST CORNER OF THE
S.E. 1/4, S.E. 1/4
SET 5/8" IRON PIPE W/YELLOW CAP # 11582

I hereby certify that this land surveying document was prepared and the related survey work was performed by me or under my direct personal supervision and that I am a duly licensed Land Surveyor under the laws of the State of Iowa.

Signature: Mark L. Lee
Mark L. Lee

Date: 1-12-05 Reg. No. 11582
My license renewal date is Dec. 31, 2006.



Corners	Corners to be Indexed		
	Section	Twp.	Range
N.E. CORNER N.W. 1/4, S.E. 1/4	27	74	27
N.W. CORNER S.E. 1/4, S.E. 1/4	27	74	27