

MICHELLE "MICKI" UTSLER, COUNTY RECORDER  
MADISON IOWA

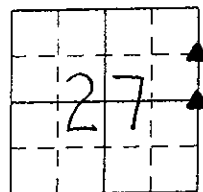
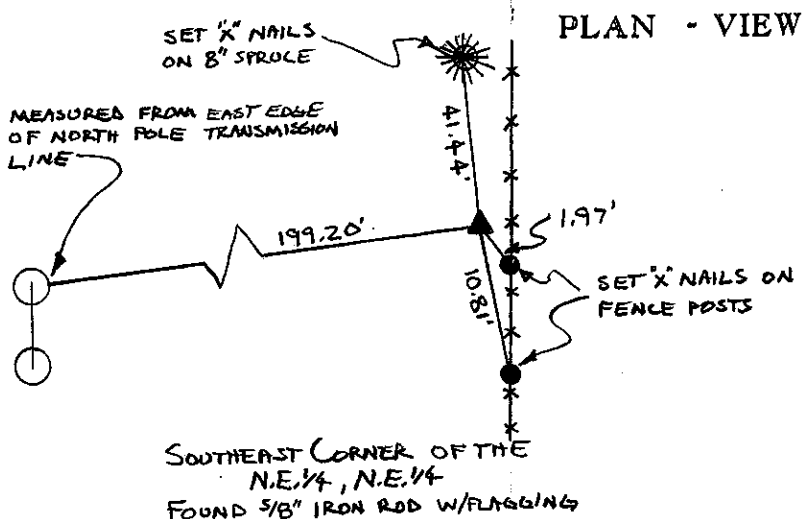
pared by Mark L. Lee, LEE Engineers & Surveyors, 3031 NW 86th Street, Urbandale, Iowa 50322 Phone: 515-252-7457

### UNITED STATES PUBLIC LAND SURVEY CORNER CERTIFICATE OF

Land Survey Monuments situated in Section 27, Township 74 North, Range 27 West, of  
the Fifth Principal Meridian, MADISON County, Iowa.

Previously recorded in NONE in the County Recorder's Office.

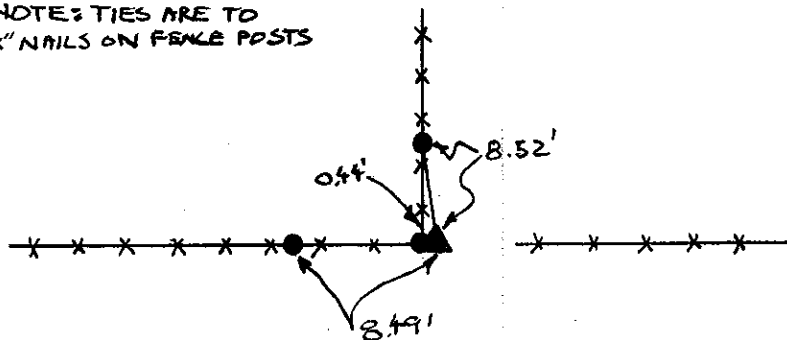
Monument Description and Remarks: SOUTHEAST CORNER OF THE N.E. 1/4, N.E. 1/4: FOUND 5/8" IRON  
ROD MATCHING DESCRIPTION AND LOCATION TO A PLAT OF SURVEY RECORDED BOOK 2 PAGE 179.  
EAST 1/4 CORNER: FOUND 5/8" IRON ROD BY FENCE CORNER MATCHING AERIAL PHOTOS.



#### LEGEND

- ▲ FOUND SECTION CORNER MONUMENT
- FOUND MONUMENT
- I FOUND CHISELED "X" IN RIGHT-OF-WAY RAIL
- ⊗ FND "X" NAILS IN FENCE POST
- △ SECTION CORNER SET 5/8" I.P. W/YELLOW CAP #11582 (UNLESS NOTED)
- SET 1/2" I.R.
- × SET "X" NAILS IN FENCE POST
- I.P. IRON PIPE
- I.R. IRON ROD (REROD)
- (M) MEASURED DIMENSION
- (R) RECORDED DIMENSION
- SECTION LINE
- - - CENTERLINE
- × × FENCE LINE
- ☼ SET "X" NAILS IN DECIDUOUS TREE

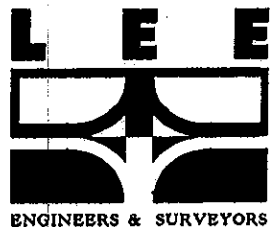
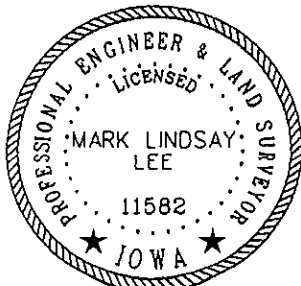
NOTES: TIES ARE TO "X" NAILS ON FENCE POSTS



I hereby certify that this land surveying document was prepared and the related survey work was performed by me or under my direct personal supervision and that I am a duly licensed Land Surveyor under the laws of the State of Iowa.

Signature: Mark L. Lee  
Mark L. Lee

Date: 1-12-05 Reg. No. 11582  
My license renewal date is Dec. 31, 2006.



Corners	Corners to be Indexed		
	Section	Twp.	Range
S.E. CORNER N.E. 1/4, N.E. 1/4	27	74	27
EAST 1/4	27	74	27