

COMPUTER   
RECORDED   
COMPARED

MICHELLE "MICKI" UTSLER, COUNTY RECORDER  
MADISON IOWA

prepared by Mark L. Lee, LEE Engineers & Surveyors, 3031 NW 86th Street, Urbandale, Iowa 50322 Phone: 515-252-7457

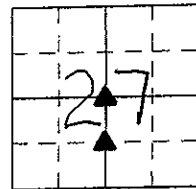
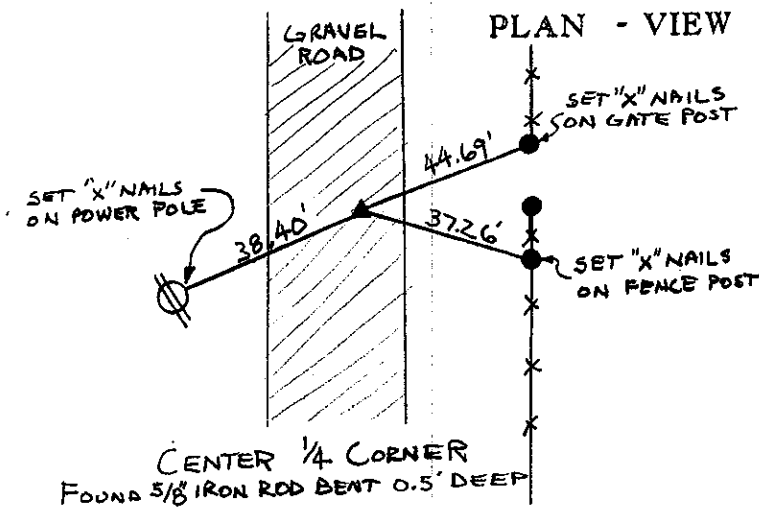
### UNITED STATES PUBLIC LAND SURVEY CORNER CERTIFICATE OF

Land Survey Monuments situated in Section 27, Township 74 North, Range 27 West, of  
the Fifth Principal Meridian, MADISON County, Iowa.

Previously recorded in NONE in the County Recorder's Office.

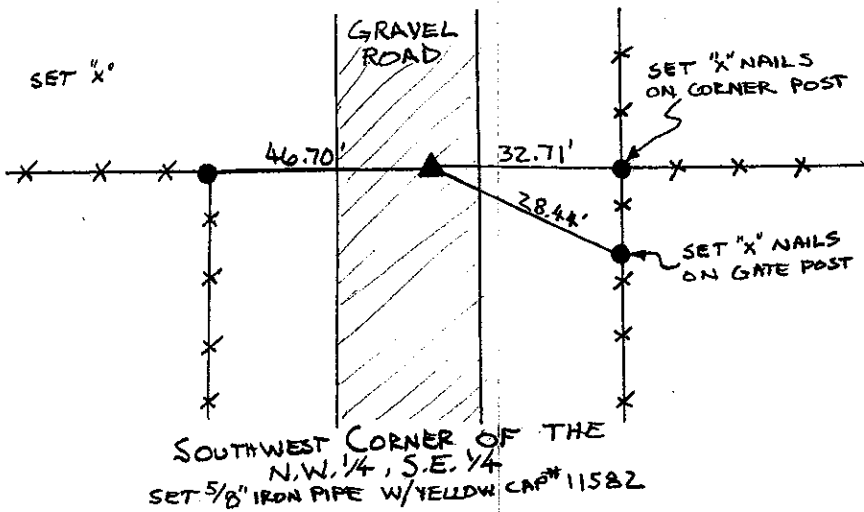
Monument Description and Remarks:

CENTER QUARTER CORNER: FOUND 1/2" IRON ROD BENT 0.5' DEEP IN GRAVEL ROAD. IN LINE WITH  
PARTIAL FENCE TO THE WEST AND GATE POST TO THE EAST.  
SOUTHWEST CORNER OF THE N.W. 1/4, S.E. 1/4: SET 5/8" IRON PIPE W/YELLOW CAP #11582, CORNER IS IN LINE  
BETWEEN THE CENTER AND SOUTH 1/4 CORNERS, AND IN LINE WITH FENCES TO THE EAST AND WEST.



#### LEGEND

- ▲ FOUND SECTION CORNER MONUMENT
- FOUND MONUMENT
- I FOUND CHISELED "X" IN RIGHT-OF-WAY RAIL
- ⊗ FND "X" NAILS IN FENCE POST
- △ SECTION CORNER SET 5/8" I.P. W/YELLOW CAP #11582 (UNLESS NOTED)
- SET 1/2" I.R.
- × SET "X" NAILS IN FENCE POST
- I.P. IRON PIPE
- I.R. IRON ROD (REROD)
- (M) MEASURED DIMENSION
- (R) RECORDED DIMENSION
- SECTION LINE
- - - CENTERLINE
- × × × FENCE LINE
- ☼ SET "X" NAILS IN DECIDUOUS TREE



I hereby certify that this land surveying document was prepared and the related survey work was performed by me or under my direct personal supervision and that I am a duly licensed Land Surveyor under the laws of the State of Iowa.

Signature: Mark L. Lee  
Mark L. Lee

Date: 1-12-05 Reg. No. 11582  
My license renewal date is Dec. 31, 2006

Corners	Corners to be Indexed		
	Section	Twp.	Range
CENTER 1/4	27	74	27
S.W. CORNER N.W. 1/4, S.E. 1/4	27	74	27

