

MICHELLE "MICKI" UTSLER, COUNTY RECORDER  
MADISON IOWA

Prepared by Mark L. Lee, LEE Engineers & Surveyors, 3031 NW 86th Street, Urbandale, Iowa 50322 Phone: 515-252-7457

### UNITED STATES PUBLIC LAND SURVEY CORNER CERTIFICATE OF

Land Survey Monuments situated in Section 27, Township 74 North, Range 27 West, of  
the Fifth Principal Meridian, MADISON County, Iowa.

Previously recorded in ENGINEERS OFFICE in the County Recorder's Office.

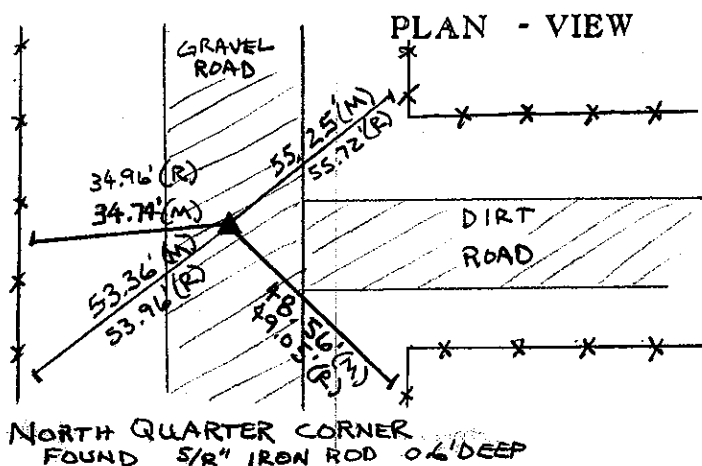
Monument Description and Remarks:

NORTH QUARTER CORNER: FOUND 5/8" IRON ROD AS RECORDED AT THE COUNTY ENGINEERS OFFICE

SOUTH QUARTER CORNER: FOUND 1/2" REBAR WITH ORANGE CAP #13427 MATCHING COUNTY

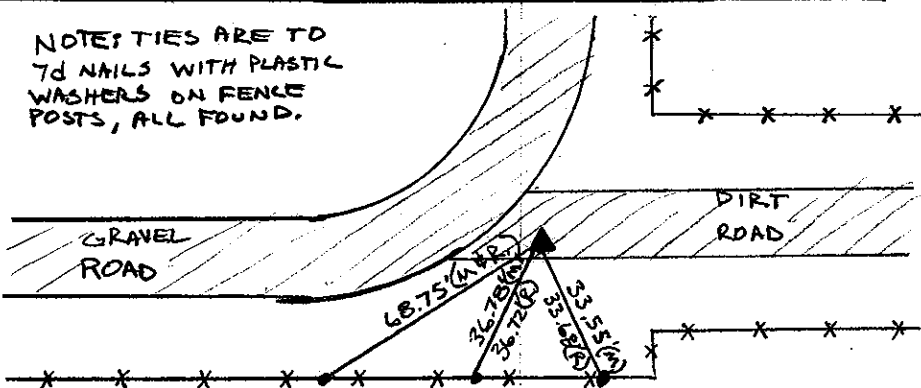
ENGINEERS TIES.

NOTES: TIES  
ARE TO CUT  
X'S ON TOP  
OF GRADER  
BLADES,

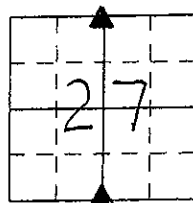


NORTH QUARTER CORNER  
FOUND 5/8" IRON ROD 0.6' DEEP

NOTES: TIES ARE TO  
7d NAILS WITH PLASTIC  
WASHERS ON FENCE  
POSTS, ALL FOUND.



SOUTH QUARTER CORNER  
FOUND 1/2" REBAR  
WITH ORANGE CAP #13427



#### LEGEND

- ▲ FOUND SECTION CORNER MONUMENT
- FOUND MONUMENT
- I FOUND CHISELED "X" IN RIGHT-OF-WAY RAIL
- ⊗ FND "X" NAILS IN FENCE POST
- △ SECTION CORNER SET 5/8" I.P. W/YELLOW CAP #11582 (UNLESS NOTED)
- SET 1/2" I.R.
- × SET "X" NAILS IN FENCE POST
- I.P. IRON PIPE
- I.R. IRON ROD (REROD)
- (M) MEASURED DIMENSION
- (R) RECORDED DIMENSION
- SECTION LINE
- - - CENTERLINE
- × × × FENCE LINE
- ☼ SET "X" NAILS IN DECIDUOUS TREE

I hereby certify that this land surveying document was prepared and  
the related survey work was performed by me or under my direct  
personal supervision and that I am a duly licensed Land Surveyor  
under the laws of the State of Iowa.

Signature: Mark L. Lee  
Mark L. Lee

Date: 1-12-05 Reg. No. 11582  
My license renewal date is Dec. 31, 2006.

Corners	Corners to be Indexed		
	Section	Twp.	Range
N 1/4	27	74	27
S 1/4	27	74	27

