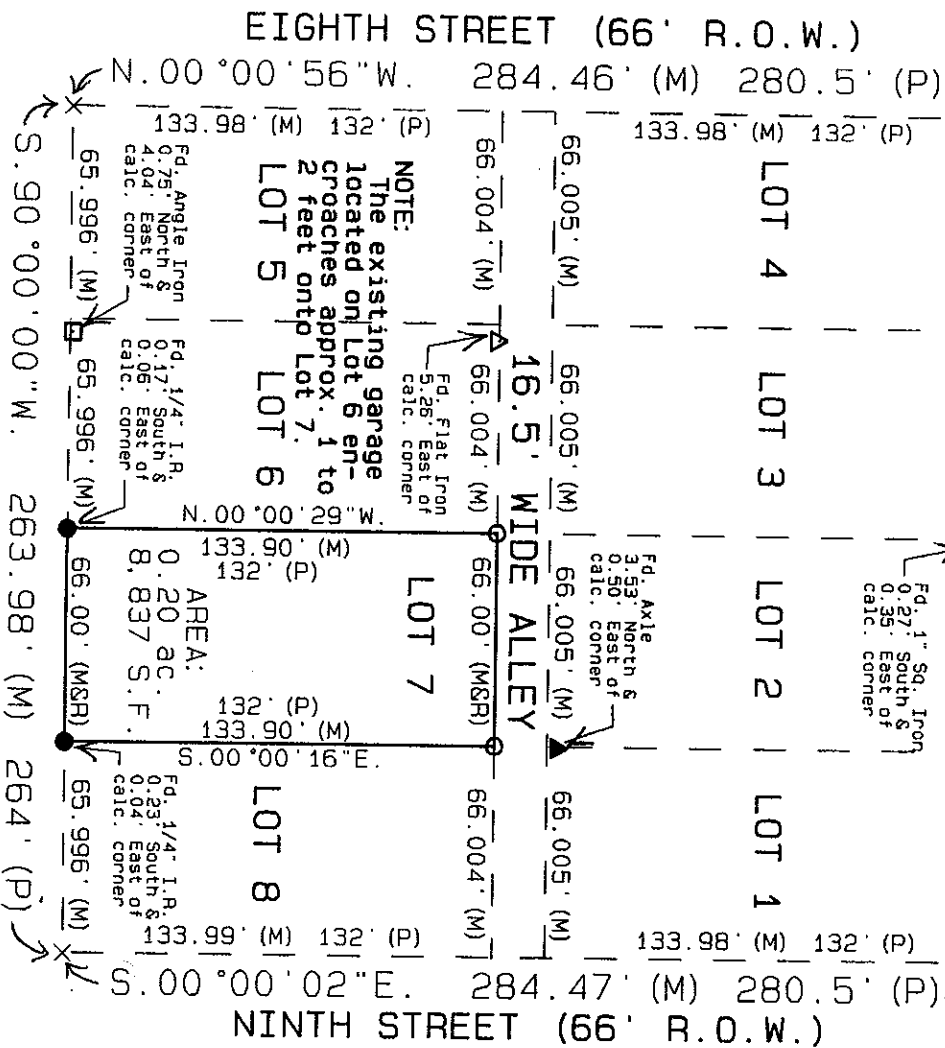


MICHELLE "MICKI" UTSLER, COUNTY RECORDER
MADISON IOWA

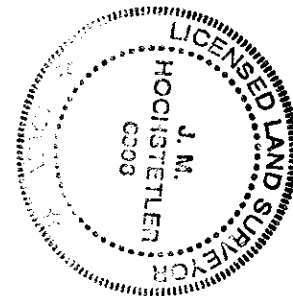
VANCE & HOCHSTETLER, P.C. CONSULTING ENGINEERS, WINTERSSET, IOWA (515) 462-3995
CHARLES T. VANCE, 110 WEST GREEN ST., WINTERSSET, IOWA 50273
JAMES M HOCHSTETLER, 110 WEST GREEN ST., WINTERSSET, IOWA 50273

A PLAT OF SURVEY FOR THE QUEEN SONGER ESTATE, OF LOT 7 OF BLOCK 12 OF LAUGHRIDGE & CASSIDAY'S ADDITION TO THE CITY OF WINTERSSET, MADISON COUNTY, IOWA.

LEGAL DESCRIPTION:
Lot 7 of Block 12 of Laughridge & Cassidy's Addition to the City of Wintersset, Madison County, Iowa.



- LEGEND
- Fd. 1/4" Iron Rod
 - Fd. Angle Iron
 - ▲ Fd. Axle
 - Fd. 1" Square Bar
 - Fd. Flat Iron
 - Set Capped Iron Rod (C.I.R.) #6808
 - x Calculated Lot Line
 - (M) No Monument Set/Found
 - (P) Measured Dimension
 - (P) Platted Dimension



I hereby certify that this land surveying document was prepared and the related survey work was performed by me or under my direct personal supervision and that I am a duly licensed Land Surveyor under the laws of the State of Iowa.

J.M. Hochstetler
J.M. HOCHSTETLER
License number 6908 Date 12/13/04
My license renewal date is December 31, 2005
Pages or sheets covered by this seal: 1

DATE OF SURVEY:
December 8, 2004

SCALE 1"=60'

0 60 120