

COMPUTER
RECORDED
COMPARED

MICHELLE "MICKI" UTSLER, COUNTY RECORDER
MADISON IOWA

04-231S VANCE & HOCHSTETLER, P.C., CONSULTING ENGINEERS, WINTERSSET, IOWA (515) 462-3995
CHARLES T. VANCE, 110 West Green St., Winterset, Iowa, 50273
JAMES M HOCHSTETLER, 110 West Green St., Winterset, Iowa 50273

UNITED STATES PUBLIC LAND SURVEY CORNER CERTIFICATE

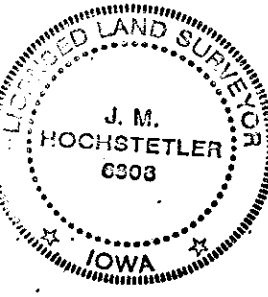
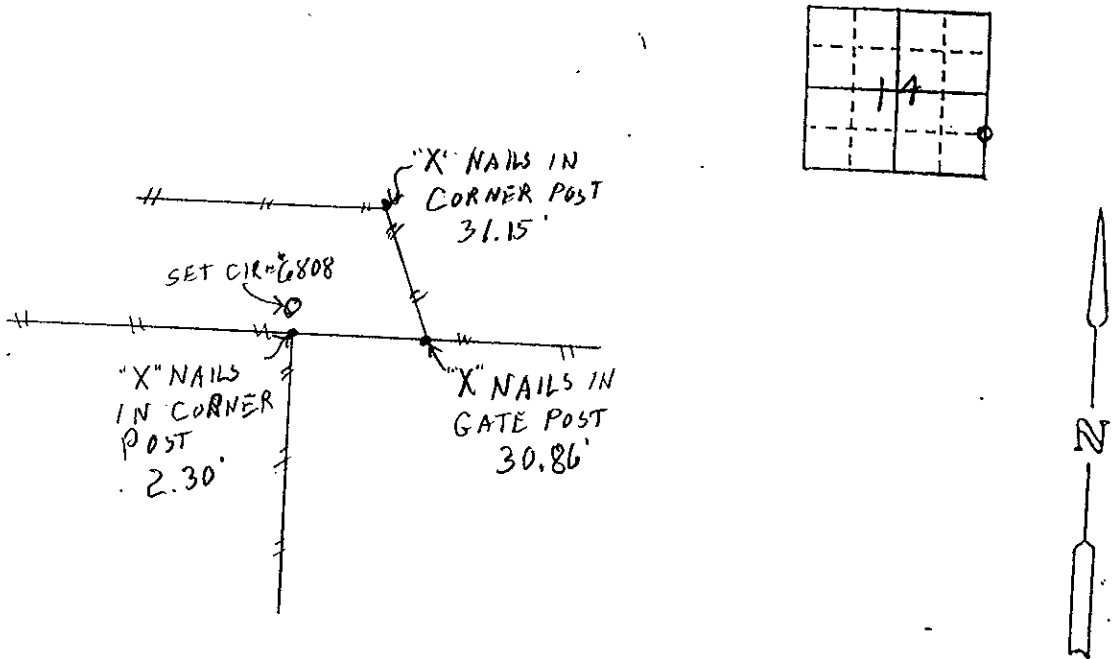
Land Survey Monuments situated in Section 14 Township 75 N. Range 28 W. of the Fifth Principal Meridian, MADISON County, Iowa.
Previously recorded in SECTION CORNER BOOK PAGE 7 in County Recorder's Office.
(book, page, document number, etc.)

(Show reason for preparing this certificate, the evidence and detailed procedures used in establishing the corner positions and monumentation found or placed.)

Monument Description and Remarks: NE Cor. SE 1/4 SE 1/4 - Set yellow CIR# 6808
Which was set and certified in 1998. New fence in the
area and evidently the pin was torn out when the fence
was built or when a water line was installed in the area.

PLAN - VIEW

(Show a minimum of three reference ties to durable physical objects, relevant monuments and physical conditions that will enable recovery of the corner.)



I hereby certify that this land surveying document was prepared and the related survey work was performed by me or under my direct personal supervision and that I am a duly licensed Land Surveyor under the laws of the State of Iowa.
J.M. Hochstetler
J.M. HOCHSTETLER
License number 6808 Date 12/7/04
My license renewal date is December 31, 2005
Pages or sheets covered by this seal: 1

List Corners to be Indexed

Corners	Section	Twp	Range
<u>NE COR</u> <u>SE 1/4 SE 1/4</u>	<u>14</u>	<u>75N</u>	<u>28W</u>