

MICHELLE "MICKI" UTSLER, COUNTY RECORDER  
MADISON IOWA

VANCE & HOCHSTETLER, P.C., CONSULTING ENGINEERS, WINTERSSET, IOWA (515) 462-3995  
CHARLES T. VANCE, 110 West Green St., Winterset, Iowa, 50273  
JAMES M HOCHSTETLER, 110 West Green St., Winterset, Iowa 50273

04-1735

COMPUTER	<input checked="" type="checkbox"/>
RECORDED	<input checked="" type="checkbox"/>
COMPARED	<input type="checkbox"/>

### UNITED STATES PUBLIC LAND SURVEY CORNER CERTIFICATE

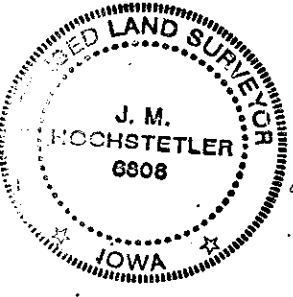
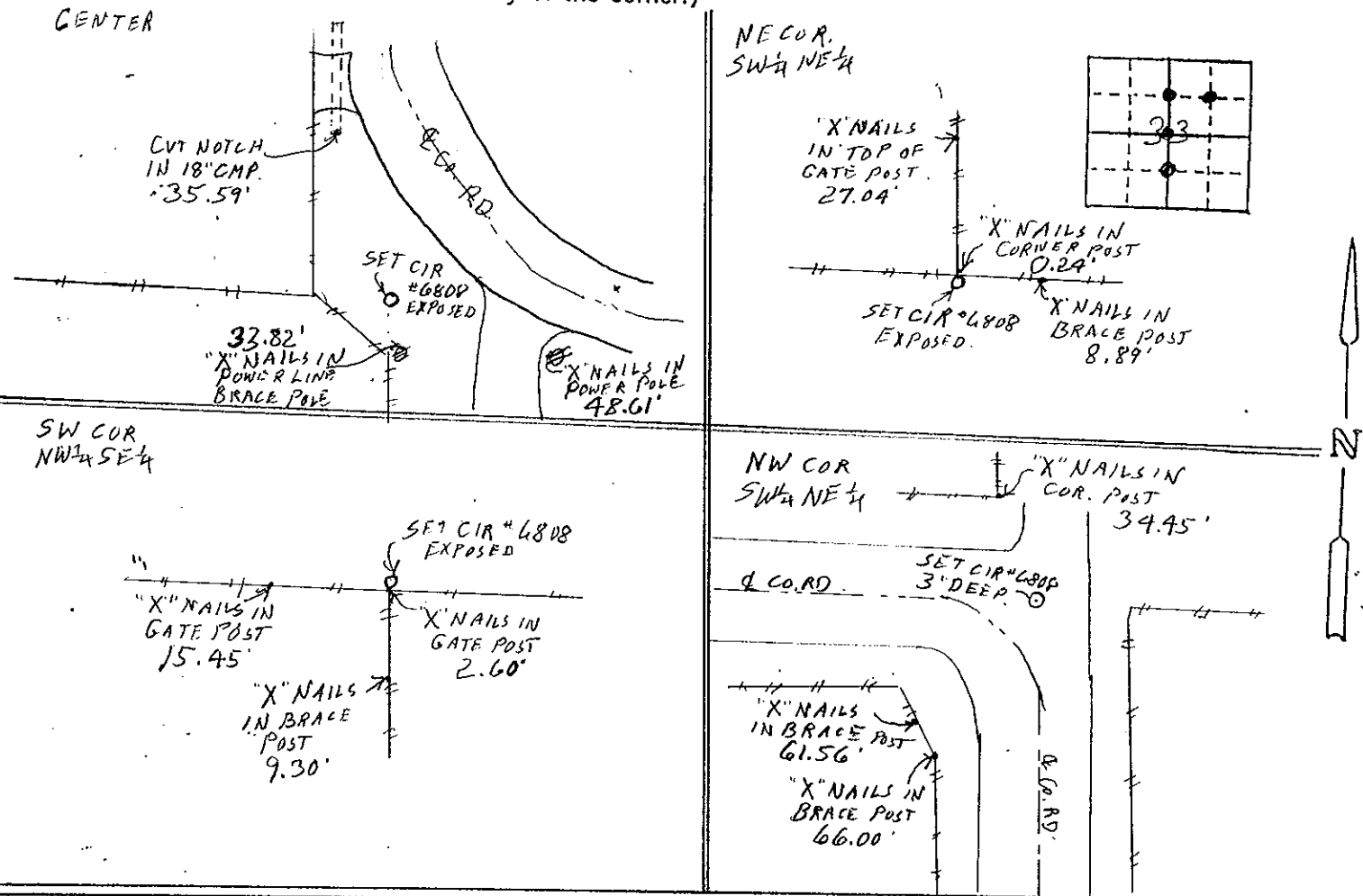
OF  
Land Survey Monuments situated in Section 33, Township 77N, Range 28W,  
of the Fifth Principal Meridian, MADISON County, Iowa.  
Previously recorded in \_\_\_\_\_ in County Recorder's Office.  
(book, page, document number, etc.)

(Show reason for preparing this certificate, the evidence and detailed procedures used in establishing the  
the corner positions and monumentation found or placed.)

Monument Description and Remarks: CENTER - Set yellow CIR#6808 in line with property line  
fence South & West & Co. RD. North & East.  
SW Cor NW 1/4 SE 1/4 - Set yellow CIR#6808 at old property line fence intersection  
East, West and South. NE Cor SW 1/4 NE 1/4 - Set yellow CIR#6808 at old property  
line fence intersection East, West and North. NW Cor SW 1/4 NE 1/4 - Set yellow  
CIR#6808 at intersection of County Road centerlines from South and West

#### PLAN - VIEW

(Show a minimum of three reference ties to durable physical objects, relevant monuments and physical  
conditions that will enable recovery of the corner.)



I hereby certify that this land surveying document was prepared and the related survey work was performed by me or under my direct personal supervision and that I am a duly licensed Land Surveyor under the laws of the State of Iowa.  
*J.M. Hochstetler*  
J.M. HOCHSTETLER  
License number 6808 Date 11/26/04  
My license renewal date is December 31, 2005  
Pages or sheets covered by this seal: 1

#### List Corners to be Indexed

Corners	Section	Twp	Range
CENTER	33	77N	28W
SW COR NW 1/4 SE 1/4	33	77N	28W
NE COR SW 1/4 NE 1/4	33	77N	28W
NW COR SW 1/4 NE 1/4	33	77N	28W